

Woodstock Drive, Tottington BL8 4BW

Asking Price £370,000



ADAMSONS BARTON KENDAL are delighted to introduce this charming two-bedroom detached property, formerly a three-bedroom home and easily convertible back if desired. Situated in a beautiful and highly regarded residential area within walking distance of Tottington Village, it offers convenient access to a range of local amenities including shops, bars, restaurants, and idyllic countryside walks right on the doorstep.

**Head Office - 122 Yorkshire Street
ROCHDALE
Lancashire
OL16 1LA**

Tel : (01706) 653214

Set on a generous plot, the property enjoys gardens to both the front and rear, along with a driveway and single garage. Inside, there is an abundance of living space featuring an open-plan layout with two sitting areas, a dining area, and a cosy conservatory that overlooks the rear garden. Additional benefits include a separate utility room, a well-appointed entrance hallway with ample storage, and a fitted kitchen complete with a small breakfast bar.

Upstairs, the spacious master bedroom offers excellent storage and a unique en-suite shower room accessed through the fitted wardrobe doors. The second bedroom—originally two separate bedrooms—has been opened up by the current owner to maximise space but can be easily reverted to create three bedrooms once again. The family bathroom features a corner bath, WC and wash basin.

The conservatory opens out onto a pleasant patio area and extensive rear garden with a useful storage shed. While the property would benefit from modernisation throughout, it is perfectly liveable as it stands, offered with no onward chain and presenting superb potential for buyers looking to create their ideal home in a sought-after location.

THE ACCOMMODATION COMPRISES:

(Measurements are approximate to the nearest 0.1m and for guidance only and they should not be relied upon for the fitting of carpets or the placement of furniture). No checks have been made on any fixtures and fittings or services where connected (water, electricity, gas and drainage) heating appliances or any other electrical or mechanical equipment in this property).

Ground Floor

Entrance Hall - 3.0 x 3.2 metres

Kitchen - 3.9 x 2.8 metres

Open Plan Living - 9.6 x 3.5 metres

Dining Space - 2.7 x 3.0 metres

Conservatory - 2.6 x 3.5 metres

Utility - 2.0 x 3.2 metres

First Floor

Bedroom 1 - 4.0 x 6.3 metres

En suite - 2.7 x 1.7 metres

Bedroom 2 - 5.2 x 3.1 metres

Bathroom - 2.4 x 2.2 metres

ADDITIONAL INFORMATION

Council Tax Band - D

Energy Performance Cert - TBC

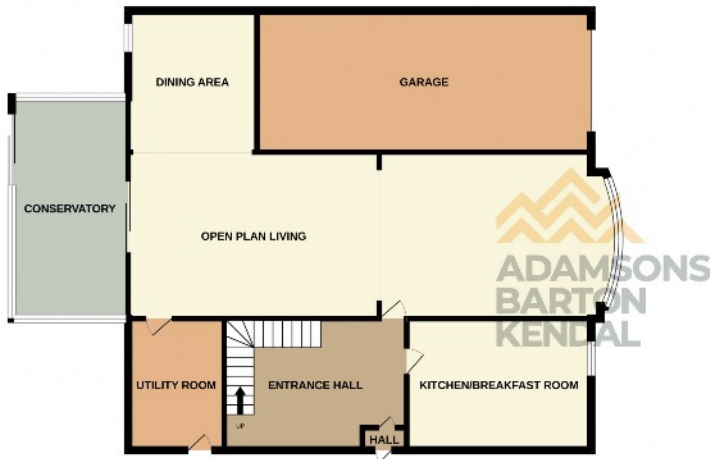
Tenure - TBC





GROUND FLOOR
1129 sq.ft. (104.9 sq.m.) approx.

1ST FLOOR
630 sq.ft. (58.5 sq.m.) approx.



TOTAL FLOOR AREA : 1759 sq.ft. (163.4 sq.m.) approx.

Whilst every attempt has been made to ensure the accuracy of the floorplan contained here, measurements of doors, windows, rooms and any other items are approximate and no responsibility is taken for any error, omission or mis-statement. This plan is for illustrative purposes only and should be used as such by any prospective purchaser. The services, systems and appliances shown have not been tested and no guarantee as to their operability or efficiency can be given.
Made with Metropix 6/2025

Score	Energy rating	Current	Potential
92+	A		
81-91	B		
69-80	C	71 C	78 C
55-68	D		
39-54	E		
21-38	F		
1-20	G		

w - abkproperty.co.uk e - sales@abkproperty.co.uk

Adamsons Barton Kendal for themselves and for the vendors or lessors of this property whose agents they are, give notice that (i) the particulars are set out as a general outline only for the guidance of intending purchasers or lessees, and do not constitute, nor constitute part of an offer or contract; (ii) all descriptions, dimensions, references to condition and necessary permission for use and occupation, and other details are given without responsibility and any intending purchasers or tenants should not rely on them as statements or representations of fact but must satisfy themselves by inspection or otherwise as to the correctness of each of them; (iii) no person in the employment of Adamsons Barton Kendal has any authority to make or give any representations or warranty in relation to this property.

Due to a change in the legislation as from 1st March 2004 we are required to check your identification. This is a legal requirement and applies to all Estate Agents: (i) proceeding to market any property; and (ii) should you make an offer on one of our properties and this offer becomes acceptable, before we can instruct Solicitors to proceed with the transaction. Suitable identification can be: Current signed Passport; New style Driving Licence with photograph; Inland Revenue Tax notification