



## Hesperus Crescent, E14

£675,000

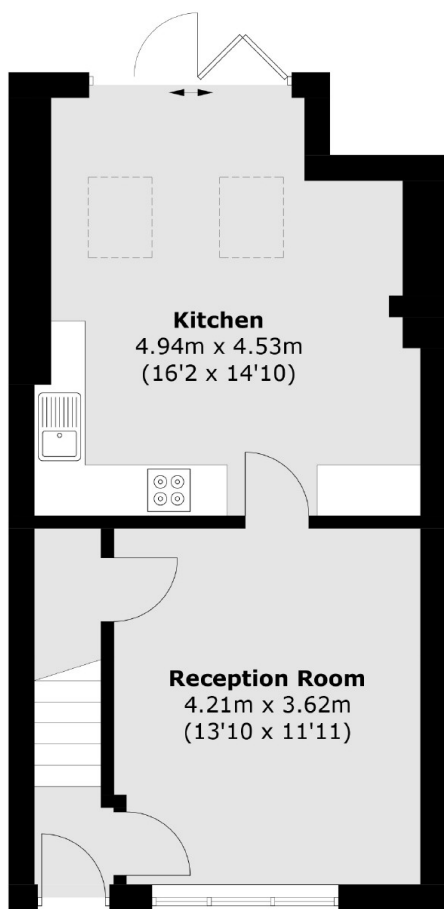
Nestled in a friendly and well-connected neighbourhood, this delightful three-bedroom terraced home offers additional features including permit parking, a re-fitted kitchen, and is being sold with no onward chain.

Mudchute DLR station is just a short walk from Hesperus Crescent, offering excellent transport links around the City. Outstanding schools near by.

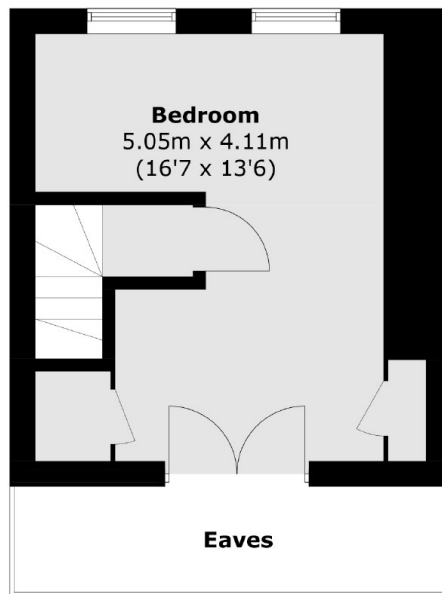
### Features

Offers Over £700,000  
Freehold House  
Three Bedrooms  
Private Garden  
Permit Parking  
Re-Fitted Kitchen

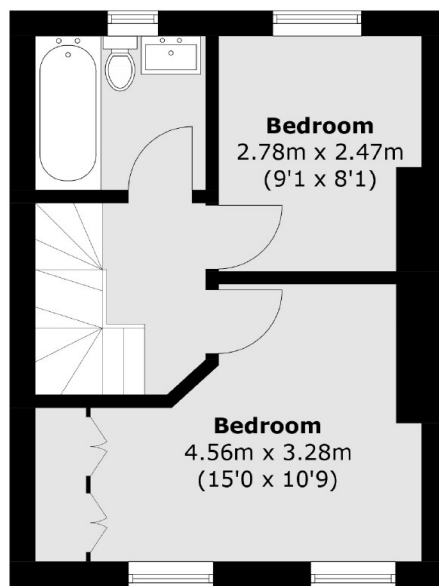
# Hesperus Crescent, London, E14



**Ground Floor**



**Second Floor**



**First Floor**

Total area (approx.): 93.3 sq. m (1,004.2 sq. ft)  
(Excluding Eaves)