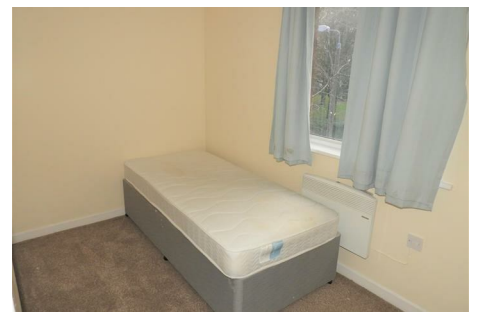


# GUILDHALL

SALES & LETTINGS



## 28 Rosemary Court Penwortham, Preston, PR1 9LL

Welcome to this charming flat located in the desirable area of Rosemary Court, Penwortham. This delightful property features a well-appointed reception room, perfect for relaxing or entertaining guests. With two spacious bedrooms, it offers ample space for individuals or small families seeking comfort and convenience.

The flat includes a modern bathroom, designed to meet your everyday needs with style and functionality. One of the standout features of this property is the provision for parking, accommodating up to two vehicles, which is a rare find in many urban settings.

Situated in Penwortham, this flat benefits from a peaceful residential environment while still being close to local amenities, schools, and transport links. Whether you are looking to invest or find a new home, this property presents an excellent opportunity for comfortable living in a sought-after location. Do not miss the chance to make this flat your own.

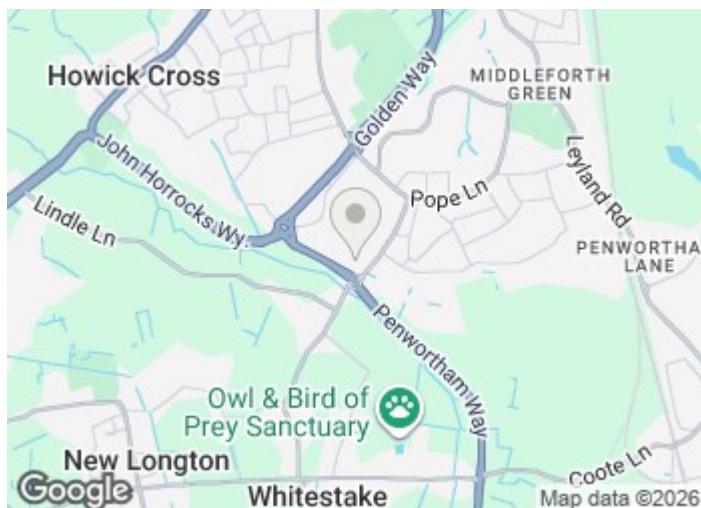
£775 PCM

## 28 Rosemary Court

Penwortham, Preston, PR1 9LL

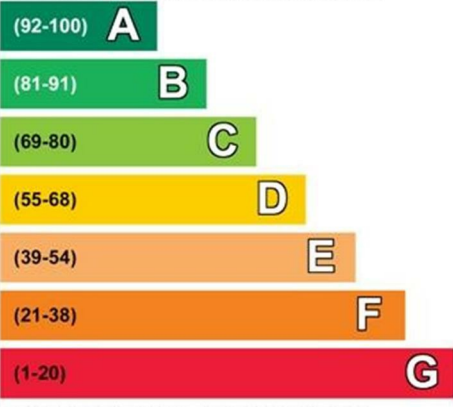


- 2 Bedrooms
- Commercial Premises
- Furnished
- 1 Receptions
- Sorry, No Pets Allowed
- Ashton
- 1 Bathroom
- Garage Parking



Directions

Very energy efficient - lower running costs



58

78



# Floor Plan

These particulars, whilst believed to be accurate are set out as a general outline only for guidance and do not constitute any part of an offer or contract. Intending purchasers should not rely on them as statements of representation of fact, but must satisfy themselves by inspection or otherwise as to their accuracy. No person in this firm's employment has the authority to make or give any representation or warranty in respect of the property.

441 Blackpool Road, Preston, PR2 2LE  
Tel: 01772769999 Email: [info@guildhalllettings.co.uk](mailto:info@guildhalllettings.co.uk) <https://guildhalllettings.co.uk/>

