

22 Brundretts Road, Chorlton, Manchester, M21 9DB



**JP&Brimelow**  
ESTATE AGENTS



🛏️ 4 🚿 1 🛋️ 2 ≡ E

\*\*\*VIDEO TOUR AVAILABLE\*\*\* A deceptively spacious & well-kept, FOUR DOUBLE BEDROOM, mid terrace property. The property is located on a highly regarded, tree lined residential road in central Chorlton location.

Chorlton centre is on your door step, close by to all local amenities including restaurants/deli's/shops on both Manchester Road and Beech Road. The Metrolink station on Wilbraham Road in Chorlton giving you direct access to City centre, Media City at Salford Quays and Manchester International Airport. Fantastic primary and secondary schools are also nearby.

In brief this well-planned property comprises of an entrance hall, a good-sized lounge to the front aspect which benefits from a box bay window, a dining room which offers an exposed brick feature fire place and stripped and varnished floor boards along with access down into the useful chamber cellars. A fitted kitchen with views and access out into the rear garden complete this floor.

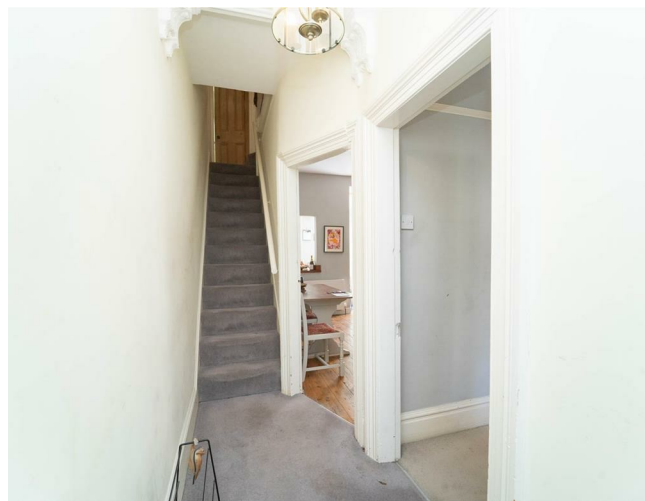
Stairs leading to the first-floor landing reveal two sizable double bedrooms, and a white three-piece shower room.

To the second floor there are two additional double bedrooms completing this delightful property.

Other benefits include gas fired central heating, high ceilings, period features, stripped and varnished floor boards, and a rear enclosed garden.


OFFERED WITH NO ONWARD CHAIN.

£550,000





## EPC Chart

Energy Efficiency Rating		Current	Potential
Very energy efficient - lower running costs			
(92 plus) <b>A</b>			
(81-91) <b>B</b>			
(69-80) <b>C</b>			
(55-68) <b>D</b>			
(39-54) <b>E</b>		51	64
(21-38) <b>F</b>			
(1-20) <b>G</b>			
Not energy efficient - higher running costs			
<b>England &amp; Wales</b>		EU Directive 2002/91/EC 	



Tenure: Freehold Council Tax Band: C



JP & Brimelow Estate Agents Ltd  
 430 Barlow Moor Road, Manchester, M21 8AD  
 Tel: 0161 8822233  
 E: sales@jpbimelow.co.uk www.jpandbrimelow.co.uk



**JP & Brimelow**  
 ESTATE AGENTS

NOTICE: JP & Brimelow Estate Agents Ltd for themselves and for the vendors or lessors of this property whose agents they are give notice that:  
 (i) the particulars are set out as a general outline only for the guidance of intending purchasers or lessees, and do not constitute, nor constitute part of, an offer or contract;  
 (ii) all descriptions, dimensions, references to the condition and necessary permissions for use and occupation, and other details are given in good faith and are believed to be correct but any intending purchasers or tenants should not rely on them as statements or representations of fact but must satisfy themselves by inspection or otherwise as to the correctness of each of them;  
 (iii) no person in the employment of JP & Brimelow Estate Agents Ltd has any authority to make or give any representation or warranty whatever in relation to this property.

jpbimelowstateagents  
 @jpandbrimelow

