



## Fulham Palace Road, W6

£473 Per week

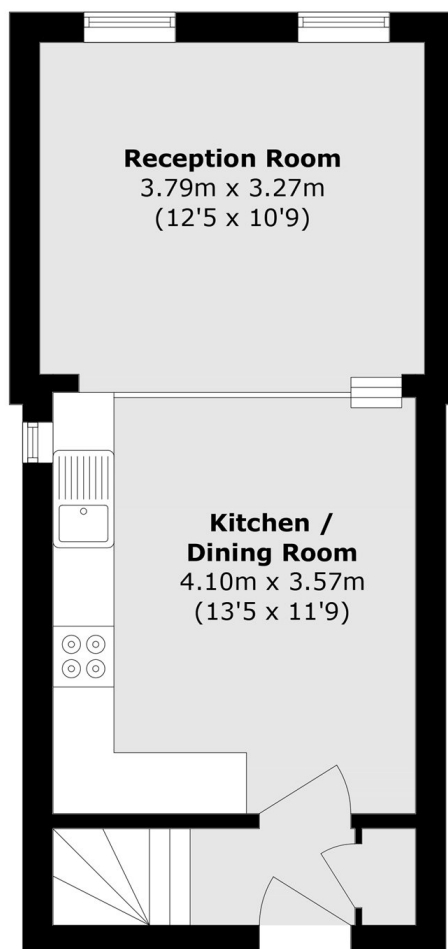
A unique one bedroom flat arranged over two floors, offering over 570 sq ft of space. The property is well presented throughout and comprises a large kitchen and living area. Upstairs, there is a spacious bedroom with built-in storage and contemporary bathroom with shower over bathtub.

Fulham Palace Road is well situated for both Hammersmith Station and Barons Court Station. There are a selection of shops, restaurants and bars in immediate proximity to the property. Furthermore, the River Thames is only within a few minutes walk.

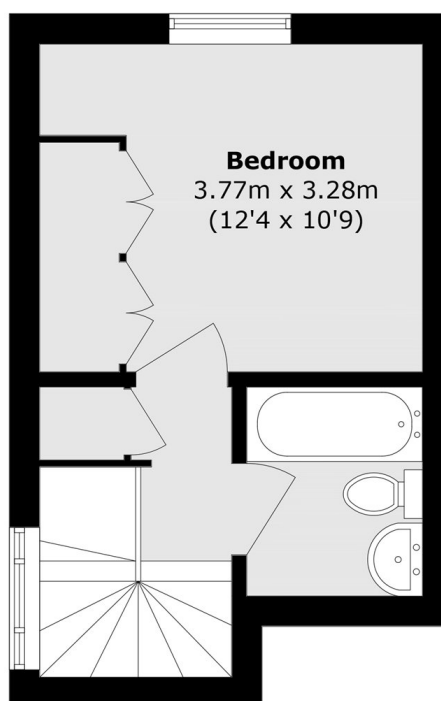
### Features

- Split-Level
- One Bedroom
- Built-In Storage
- Close to River Thames
- Hammersmith Station

# Fulham Palace Road, London, W6



**First Floor**



**Second Floor**

Total area (approx.): 53.7 sq. m (578.0 sq. ft)