



Amy Warne Close, London, E6 5ZL
£2,300 Per month



Amy Warne Close, London, E6 5ZL

£2,300 Per month

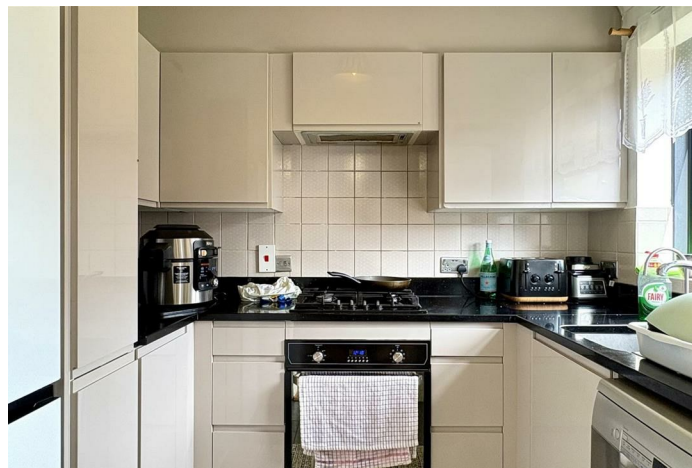
Nestled in the charming neighbourhood of Amy Warne Close, London, this delightful house offers a perfect blend of comfort and modern living. With three well-proportioned bedrooms, this property is ideal for families or those seeking extra space for guests or a home office. The house features a spacious reception room, providing a welcoming area for relaxation and entertaining.

The two bathrooms ensure convenience for all residents, making morning routines and evening unwinding a breeze. The layout of the home is thoughtfully designed, allowing for both privacy and communal living.

Situated in a desirable location, this property benefits from easy access to local amenities, schools, and transport links, making it an excellent choice for those who wish to enjoy the vibrant lifestyle that London has to offer.

Key Features

- Three bedrooms house
- Private Garden
- Close to Local Amenities
- Drive Way
- Great Condition
- Close to local amenities

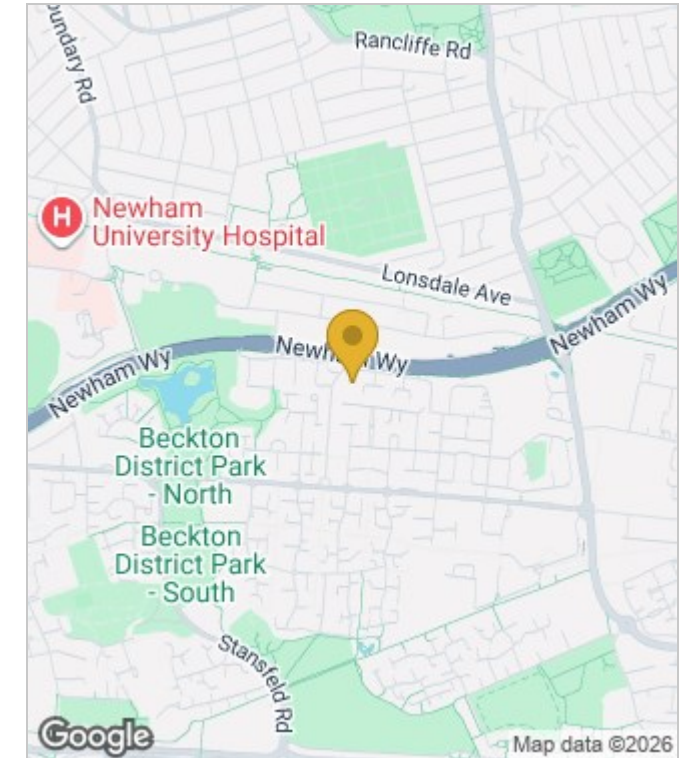


Council Tax Band: C

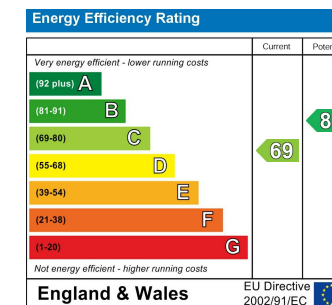
Floor Plans



Area Map



Energy Performance Graph



These particulars, whilst believed to be accurate are set out as a general outline only for guidance and do not constitute any part of an offer or contract. Intending purchasers should not rely on them as statements of representation of fact, but must satisfy themselves by inspection or otherwise as to their accuracy. No person in this firm's employment has the authority to make or give any representation or warranty in respect of the property.