



Cleveland Road, London, W4

Guide Price £700,000

WHITMAN & CO.

SALES · LETTINGS · COMMERCIAL

- Private west-facing garden
- 17' Kitchen/dining room
- Luxury bathroom
- Reception room
- Two bedrooms
- Long lease & share in the freehold

Tenure - Leasehold & share of the freehold
 Lease length - 980 years remaining
 Ground rent - peppercorn
 Maintenance charge - £400 pa
 Local authority - Ealing
 Council tax - Band E

THE PROPERTY

A beautifully refurbished two-bedroom period conversion flat with a private west-facing garden, ideally located in this sought-after residential area, offering close proximity to numerous amenities.

The property comprises two bedrooms, luxury bathroom, reception room opening into 17' kitchen/dining room, and a private landscaped garden.

Situated within close proximity of Chiswick Park Tube Station and the extensive range of shops, bars and restaurants on Chiswick High Road. In the catchment area of excellent private and state schools.

Cleveland Road, W4

Approximate Gross Internal Area

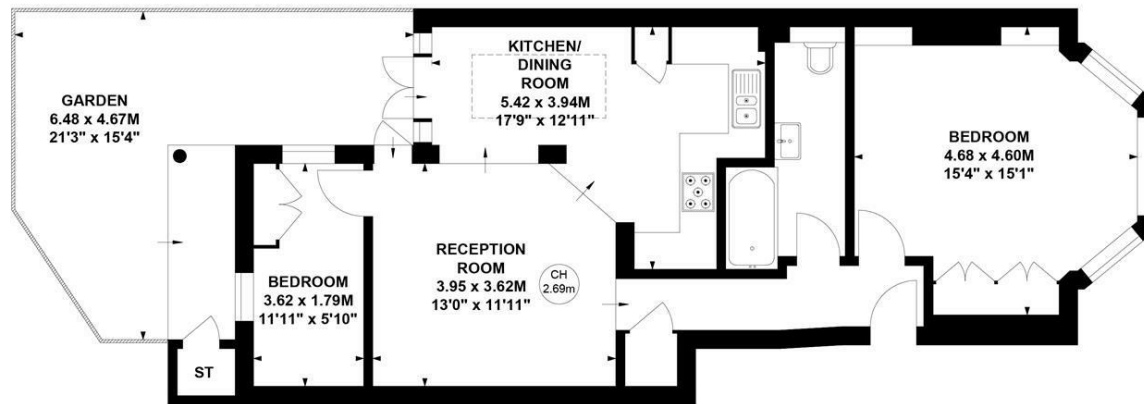
68.84 sq m / 741 sq ft

(Including Store)

Store 0.71 sq m / 7 sq ft



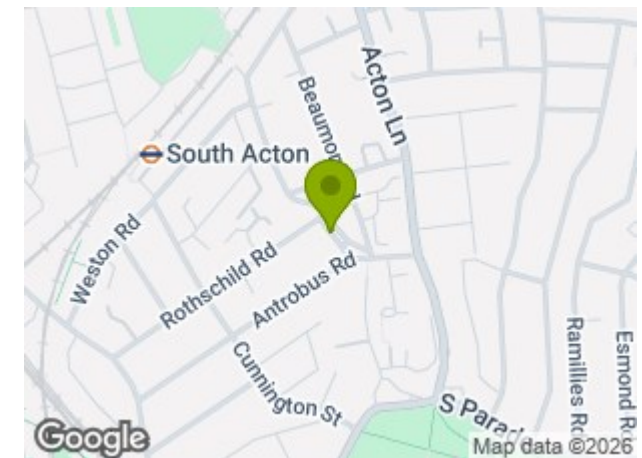
Key :
 CH - Ceiling Height



Ground Floor

Not to scale, for guidance only and must not be relied upon as a statement of fact.
 All measurements and areas are approximate only

SITUATION



5-7 Turnham Green Terrace, Chiswick, London, W4 1RG

Tel 020 8747 8800

E-mail sales@whitmanandco.com

Website www.whitmanandco.com



MISREPRESENTATION ACT 1967

Whitman & Co. for themselves and for the vendors give notice that these particulars do not constitute any part of, an offer of contract. All statements contained in these particulars are made without responsibility on the part of Whitman & Co. or the vendor. None of the statements contained in these particulars is to be relied upon as statements or representations of facts. Any intending purchaser must satisfy himself by inspection or otherwise as to the correctness of each of the statements contained in these particulars. The vendor does not make or give, and neither Whitman & Co. or any person in their employment has any authority to make or give, any representation or warranty whatever in relation to the property.