

BRUNTON

RESIDENTIAL



BEAUMONT COURT, PEGSWOOD, NE61

Asking Price £300,000

BRUNTON

RESIDENTIAL





BRUNTON

RESIDENTIAL



BRUNTON

RESIDENTIAL



Well-presented four-bedroom detached home, situated within an established development in the popular village of Pegswood and offering upgraded, well-balanced accommodation.

The property features a spacious living room with French doors to the garden, a high-specification kitchen/diner with granite work surfaces and central island, and a versatile additional reception room with bay window. Further benefits include a utility room, ground floor WC, and four bedrooms, with the main bedroom enjoying a modern en-suite. Externally, the property benefits from a double driveway, garage, and a southerly facing rear garden with patio and pergola, providing an ideal space for outdoor use.

Pegswood offers a range of local amenities including a primary school, convenience stores and a café, with excellent transport links providing easy access to Morpeth, Ashington and the wider Northumberland area.

BRUNTON

RESIDENTIAL



BRUNTON

RESIDENTIAL

The internal accommodation comprises: a composite front door opening into an entrance hallway, finished with LVT herringbone-effect flooring that continues throughout much of the ground floor. From here, there are stairs leading to the first-floor landing, a useful under-stairs storage alcove, and a convenient ground floor WC. To the left-hand side is a versatile reception room, currently used as a dining room or second lounge, featuring a bay window to the front aspect. To the rear of the property is a spacious main living room, benefiting from French doors and windows opening onto the rear garden, allowing for excellent natural light. This space flows through into the kitchen/diner, which has been upgraded to a high specification, incorporating fitted wall and base units, granite work surfaces, and a central island. Integrated appliances include a fridge, dishwasher, oven, gas hob with extractor, and a warming drawer. From the kitchen, there is access to a utility room, formed from part of the garage, providing additional storage, plumbing for appliances, and an integrated fridge and freezer, along with an external door giving side access.

To the first floor, the landing gives access to four bedrooms, including three well-proportioned doubles. The main bedroom benefits from a modern en-suite shower room with a rain-style shower, while the remaining bedrooms are served by an updated family bathroom with contemporary fittings and tiling.

Externally, the property benefits from a double tarmac driveway and a garage with roller-shutter door, power, lighting, and tiled flooring. To the rear, there is a southerly facing garden with a paved patio, pergola, raised planting beds, and a storage shed, backing onto a pleasant walkway.



BRUNTON

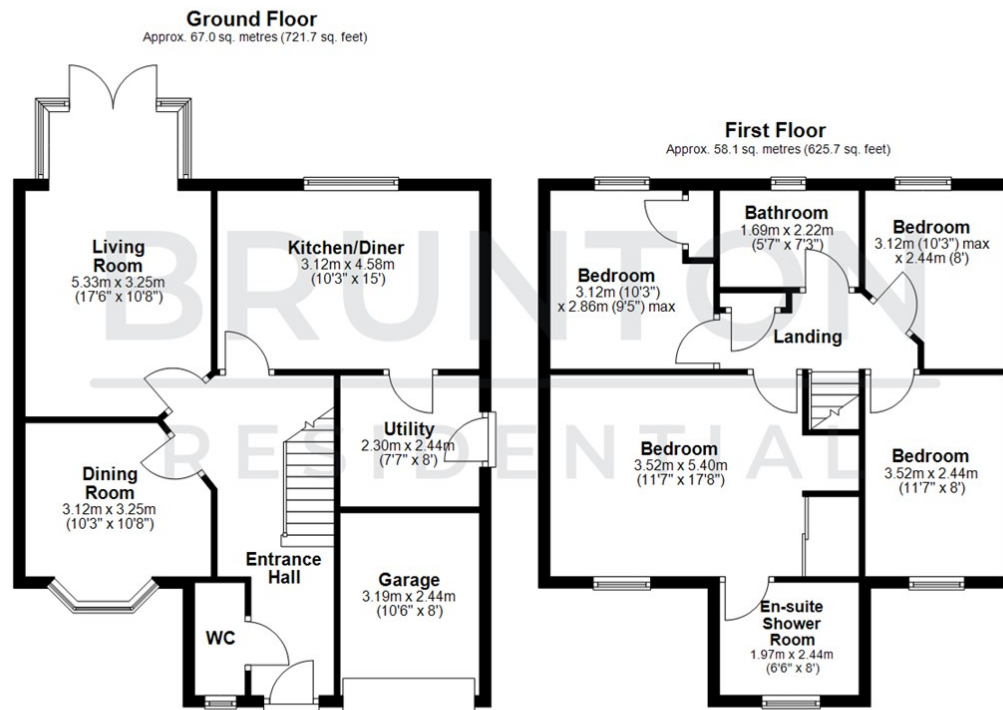
RESIDENTIAL

TENURE : Freehold

LOCAL AUTHORITY : Northumberland
County Council

COUNCIL TAX BAND : D

EPC RATING : C



Total area: approx. 125.2 sq. metres (1347.4 sq. feet)

All measurements are approximate and are for illustration only.
Plan produced using PlanUp.

