



William Court, Hemel Hempstead, HP3 0AY

Offers In Excess Of £375,000

Located in the highly sought after Manor Estate is this end of terrace house offered in excellent decorative order throughout. Boasting two bedrooms, 14'4 lounge, 13'10 modern fitted kitchen/diner with built in appliances, conservatory, gas central heating, double glazing, front and rear gardens and two allocated parking spaces.

Situated within easy reach of both Apsley which is only a 15 minute walk away and Hemel Hempstead mainline stations with access to London Euston in only 30 minutes, local shops, restaurants, Two Waters Primary School, local parks, Boxmoor, Hemel Hempstead town centre and the M1, M25 and A41 road links.

Welcome to this charming two-bedroom end of terrace home located in the desirable William Court on the Manor Estate. Spanning an inviting 675 square feet, this property offers a perfect blend of comfort and modern living.

As you enter, you are greeted by a spacious 14'4 lounge that flows seamlessly into a delightful conservatory, providing an ideal space for relaxation or entertaining guests. The heart of the home is the contemporary modern fitted kitchen/diner, measuring 13'10, which is perfect for family meals or casual dining.

This property features two well-proportioned bedrooms, making it suitable for small families, couples, or individuals seeking extra space. The contemporary bathroom is conveniently located to serve both bedrooms, ensuring practicality for everyday living.

Gas central heating and double glazing throughout the home ensures warmth and comfort during the colder months. Outside, you will find both front and rear gardens, offering a lovely outdoor space for gardening or enjoying the fresh air. Additionally, the property comes with two allocated parking spaces, a valuable asset in this sought-after area.

William Court is ideally situated, providing easy access to local amenities, schools, and transport links, making it a perfect choice for those looking to settle in a vibrant community. This end terrace home is a wonderful opportunity for anyone seeking a comfortable and modern living space in Hemel Hempstead. Don't miss your chance to make this delightful property your new home.

Lounge 14'4 x 13'11 max (4.37m x 4.24m max)



Modern Fitted Kitchen/Diner 13'10 x 7'5 (4.22m x 2.26m)

Conservatory 10'10 x 5'6 (3.30m x 1.68m)

Landing



Bedroom One 13'11 max x 10'10 (4.24m max x 3.30m)



Bedroom Two 10'11 max x 7'2 (3.33m max x 2.18m)



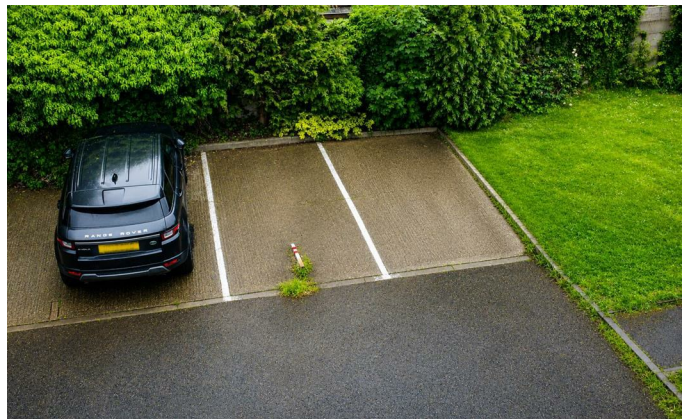
Rear Garden



Bathroom



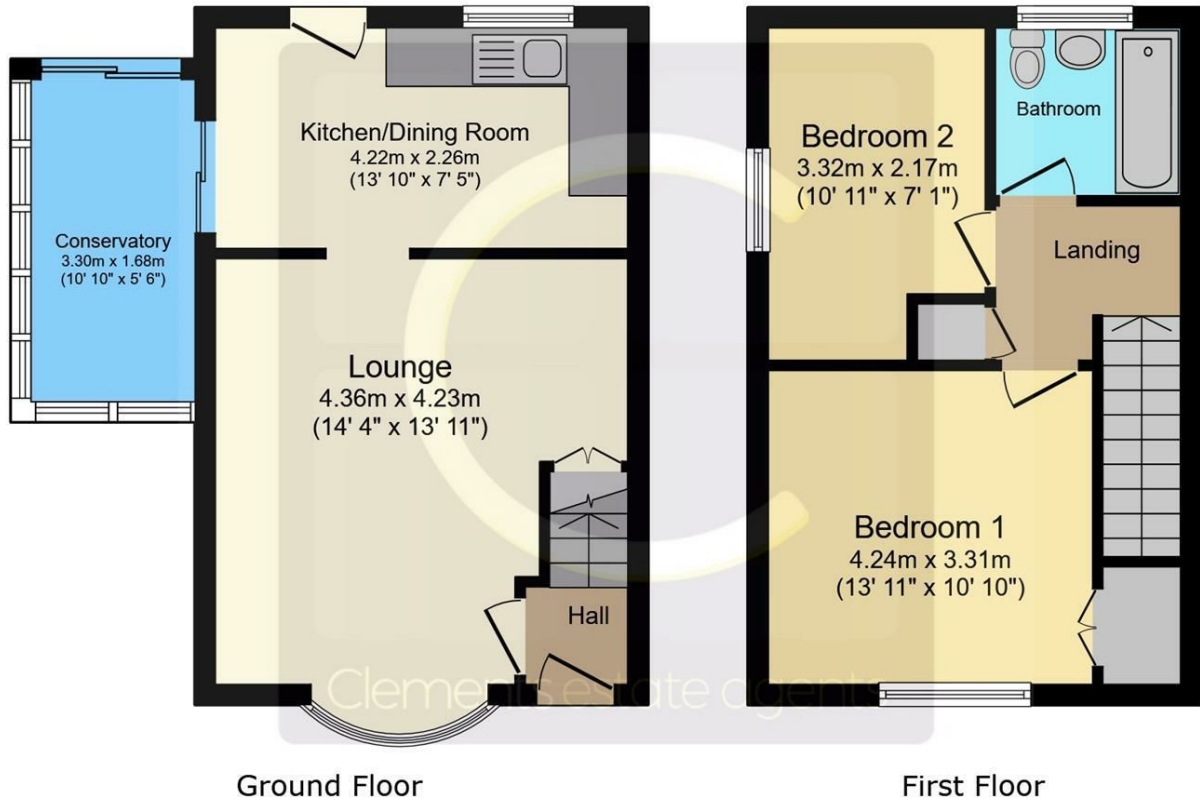
Off Road Parking for Two Cars



Front Garden

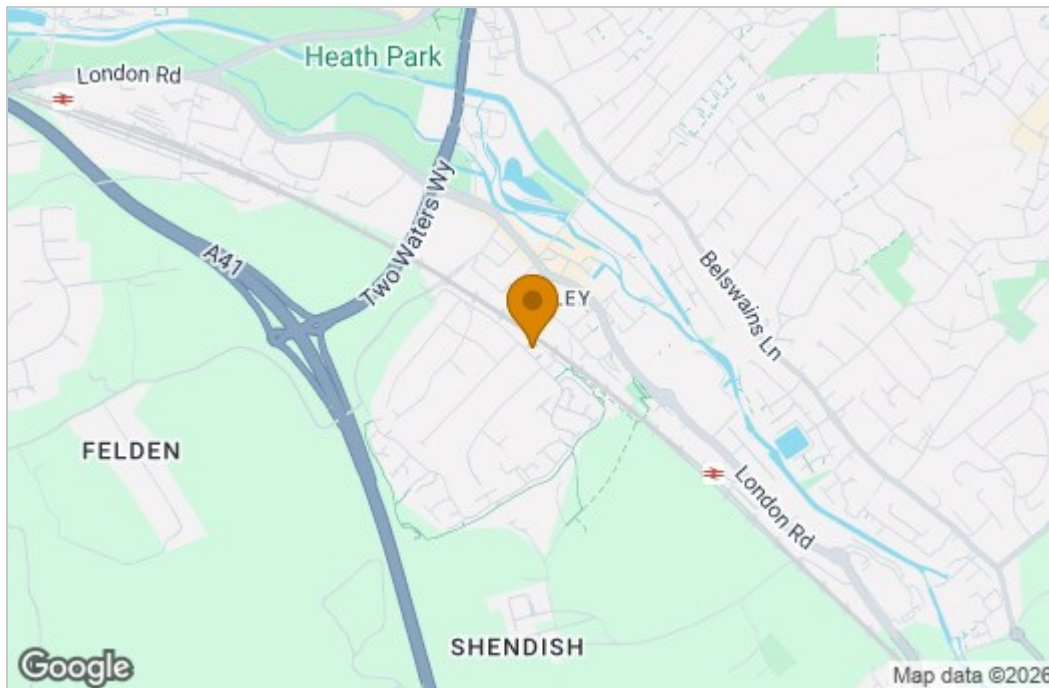


Floor Plan

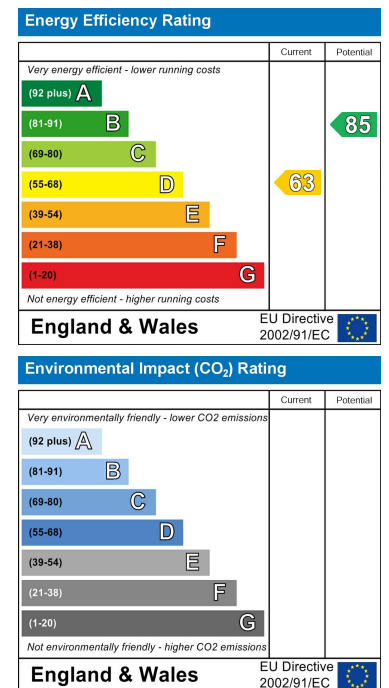


This floor plan is for illustrative purposes only. It is not drawn to scale. Any measurements, floor areas (including any total floor area), openings and orientations are approximate. No details are guaranteed, they cannot be relied upon for any purpose and do not form any part of any agreement. No liability is taken for any error, omission or misstatement. A party must rely upon its own inspection(s). Powered by www.Propertybox.io

Area Map



Energy Efficiency Graph



These particulars, whilst believed to be accurate are set out as a general outline only for guidance and do not constitute any part of an offer or contract. Intending purchasers should not rely on them as statements of representation of fact, but must satisfy themselves by inspection or otherwise as to their accuracy. No person in this firm's employment has the authority to make or give any representation or warranty in respect of the property.