



## Bailey Street, SE8

£450,000

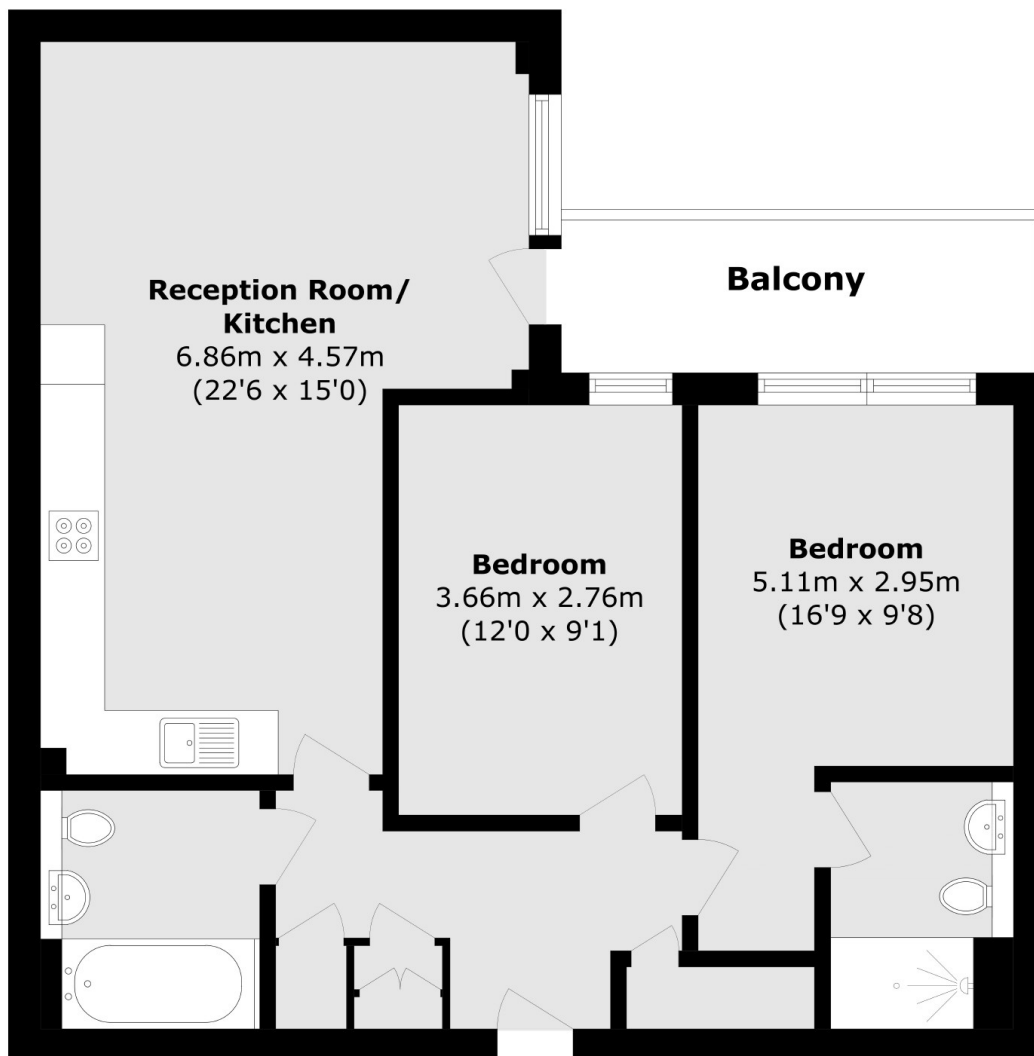
Located in this sought after development, this two double bedroom flat is in stunning condition and has two bathrooms, large open plan kitchen and living space, secluded private balcony, concierge facilities and an on-site gym.

Gothenburg Court is located within easy reach of the Jubilee Line and Overground and is surrounded by shops, cafés and restaurants. The river is also moments away.

### Features

- Two Double Bedroom
- Two Bathrooms
- Concierge & Gym Facilities
- Modern Development
- Long Lease
- Fantastic Condition

# Bailey Street, London, SE8



Total area (approx.): 68.6 sq. m (738.4 sq. ft)

Balcony area (approx.): 6.3 sq. m (67.8 sq. ft)