



Guide Price
£325,000

Leasehold

2x 🏠 1x 🚗 1x 🚗

**Birchanger Road,
London, SE25**

OVER 60?

Secure this property
for up to **59% less!**

cubitt & west
Helping you move forwards



Main features

- Spacious living area with plenty of natural light
- Modern fitted kitchen
- Generous built-in storage throughout
- Private rear garden - perfect for relaxing or entertaining.
- Driveway providing off-street parking

Accommodation

GROUND FLOOR

Hallway

Living Room : 16'1 x 10'3 (4.91m x 3.13m)

Kitchen: 16'3 x 15'0 (4.96m x 4.58m)

Bathroom

Bedroom 1: 14'6 x 13'9 (4.42m x 4.19m)

Bedroom 2: 12'3 x 9'6 (3.74m x 2.90m)

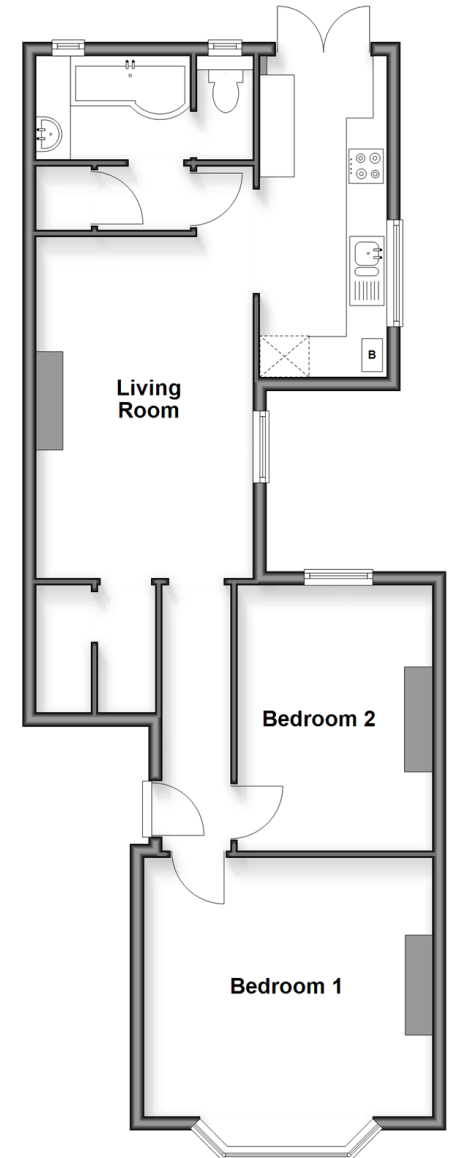
OUTSIDE

Rear Garden

Off Road Parking

Ground Floor

Approx. 68.4 sq. metres (736.7 sq. feet)



Call Shirley - 020 8654 3037 ■ cubittandwest.co.uk

- Legal advice should be taken to verify fixtures/fittings, planning, alterations and/or lease details
- Appliances & services are untested, dimensions are approximate and floor plans are not to scale
- Through a Homewise Home For Life Plan people aged 60+ can secure this property for up to 59% less, by purchasing a Lifetime Lease



21711866/20260111/SR/MS