



## 102 Lilford Road London

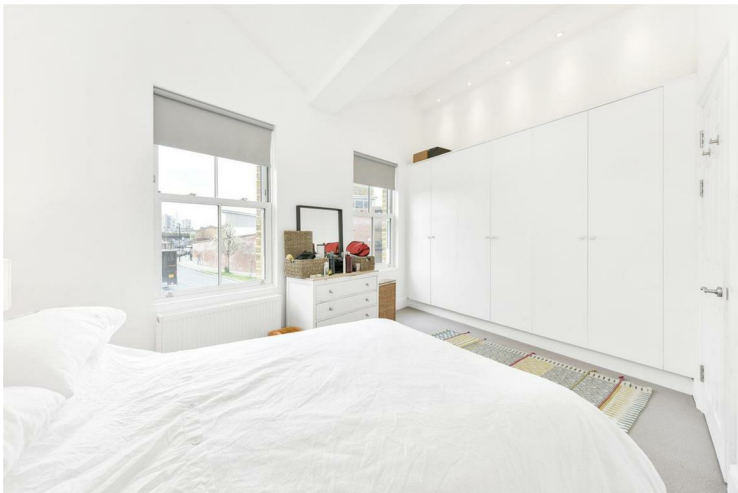
£4,000 PCM

This luxury house is extremely modern and located on Lilford Road SE5 perfectly in between Brixton and Camberwell. The property comprises of an amazing open plan kitchen/dining area with a large living space flooded with an abundance of natural light - leading to a private garden/patio space. All four double bedrooms come furnished to a high standard including tonnes of storage space. Split over two levels this whole property is very well proportioned throughout and is a definite must see!

Call the lettings department to reserve a viewing - 0207 015 1360.



- Four Double Bedrooms • Mid Terrace House • Superb Layout • Furnished • Quiet Residential Street • Private Rear Garden • Ample Storage Space



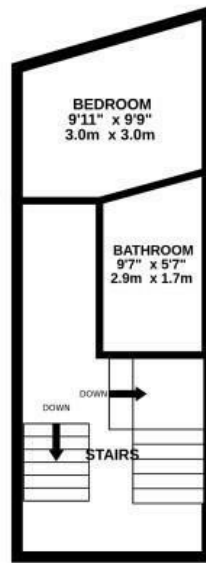
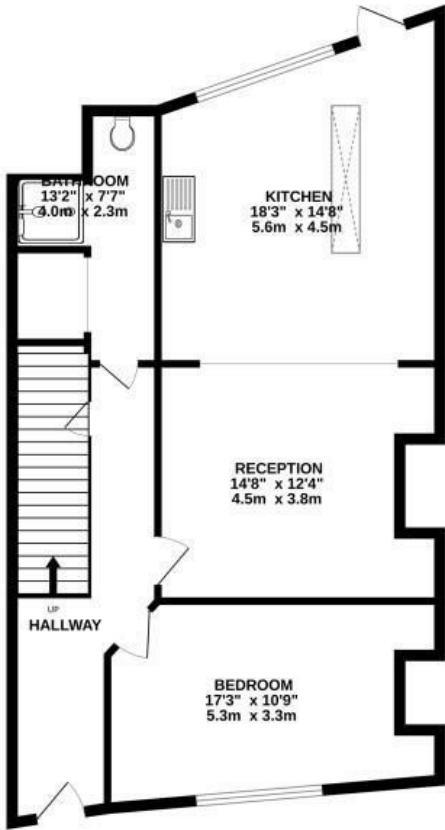


GROUND FLOOR  
800 sq.ft. (74.3 sq.m.) approx.

1ST FLOOR  
266 sq.ft. (24.7 sq.m.) approx.

2ND FLOOR  
353 sq.ft. (32.8 sq.m.) approx.

102 Lilford Road, London, SE5 9HR



TOTAL FLOOR AREA : 1419 sq.ft. (131.8 sq.m.) approx.



Energy Efficiency Rating		
	Current	Potential
Very energy efficient - lower running costs		
(92 plus) <b>A</b>		
(81-91) <b>B</b>		
(69-80) <b>C</b>		
(55-68) <b>D</b>		
(39-54) <b>E</b>		
(21-38) <b>F</b>		
(1-20) <b>G</b>		
Not energy efficient - higher running costs		
<b>England &amp; Wales</b>	EU Directive 2002/91/EC	

Agents Note: Whilst every care has been taken to prepare these particulars, they are for guidance purposes only. All measurements are approximate and are for general guidance purposes only and whilst every care has been taken to ensure their accuracy, they should not be relied upon and potential buyers/tenants are advised to recheck the measurements

Borough Lettings  
230 Borough High Street  
London  
SE1 1JX

020 7015 1360  
enquiries@leonardleese.com  
www.leonardleese.com

