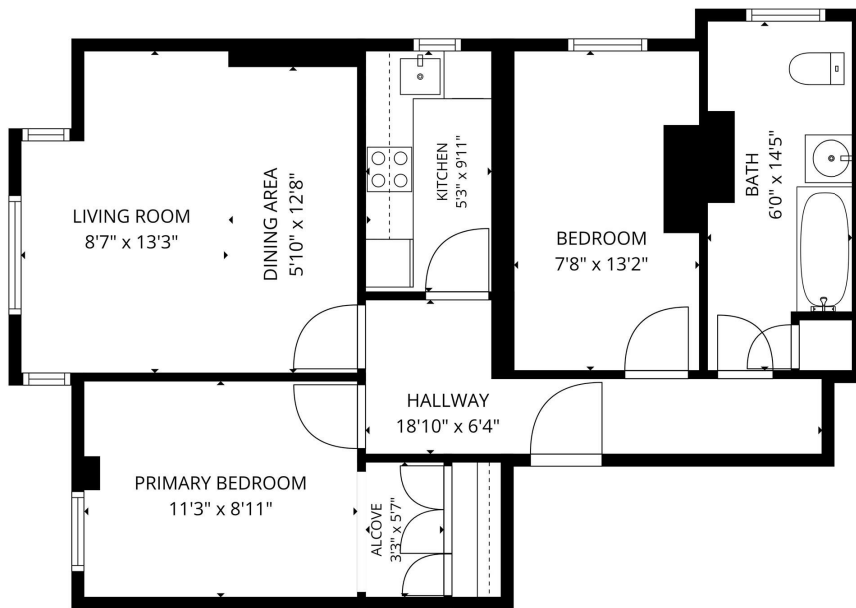


53 Russell Terrace, Leamington Spa  
Offers Over £240,000

charlesrose.



TOTAL: 659 sq. ft  
1st floor: 659 sq. ft  
EXCLUDED AREAS: WALLS: 58 sq. ft  
Measurements are calculated accurately but are not guaranteed.



Bright and characterful first-floor apartment within an attractive period conversion, offering two double bedrooms, a spacious living/dining room with high ceilings and sash windows, separate kitchen, large bathroom and a highly convenient position close to Leamington Spa town centre and railway station.

charlesrose.

- 01926 832411
- hello@charlesrose.co.uk
- charlesrose.co.uk

