

Mike
Dobson



14 Ashlea Close

Garforth, Leeds, LS25 1JX

£360,000

14 Ashlea Close

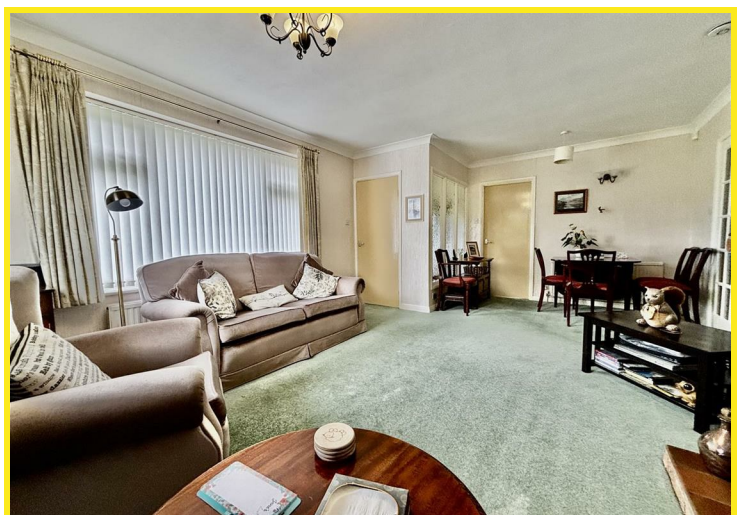
Nestled in the tranquil cul-de-sac of Ashlea Close in Garforth, Leeds, this charming three-bedroom extended detached bungalow presents an excellent opportunity for those seeking a peaceful yet convenient lifestyle. With no onward chain, this property is ready for you to make it your own.

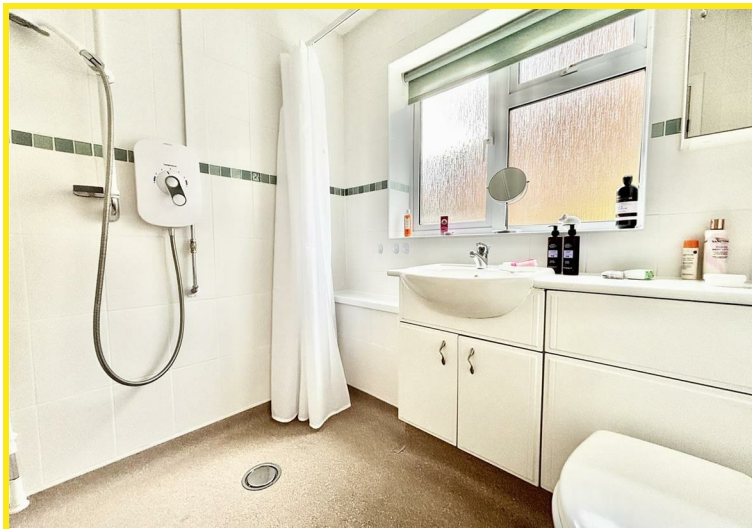
Upon entering, you are welcomed into a spacious lounge/diner, perfect for both relaxation and entertaining. The modern fitted kitchen is a delight, featuring a four-ring electric hob, double oven, and integrated appliances including a fridge and dishwasher, making meal preparation a pleasure.

The bungalow boasts three well-proportioned bedrooms, providing ample space for family or guests. The wet room is designed with a vanity unit and low flush WC.

Outside, the property sits on a generous plot, offering off-road parking that leads to a garage with an up-and-over door. The outdoor space is a true highlight, featuring a lovely patio area, a lush lawn, and a variety of mature trees, plants, and shrubs, creating a serene garden oasis.

This delightful bungalow is perfect for those looking for a comfortable home in a quiet setting, while still being close to local amenities and transport links. Don't miss the chance to view this wonderful property and envision your future in this lovely home.

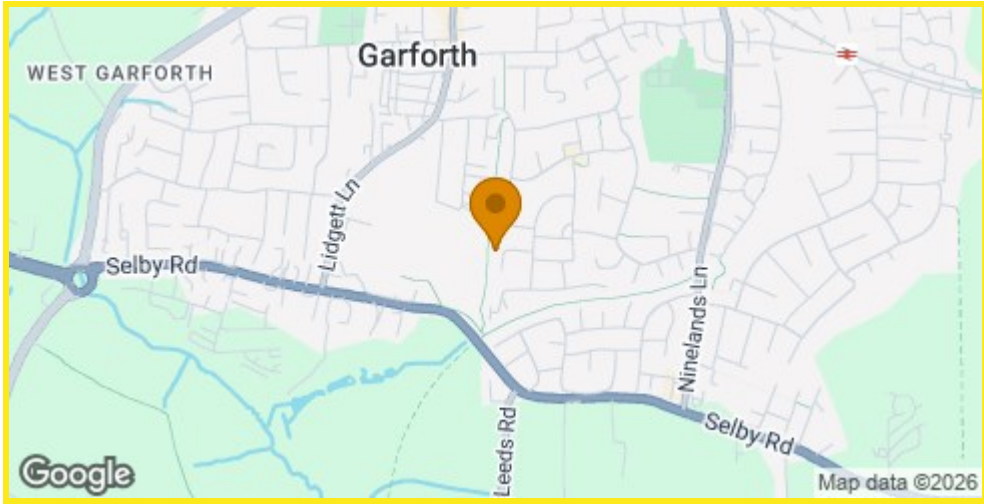




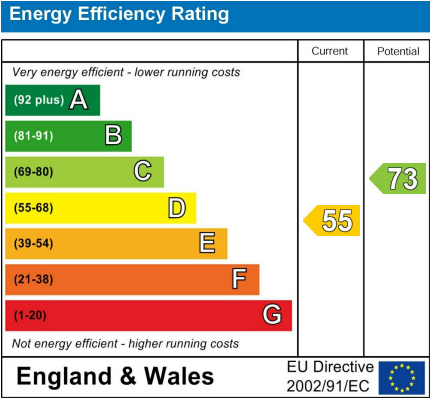
Floor Plan



Area Map



Energy Efficiency Graph



Directions

From Main St, Garforth turn left onto Church Lane. Turn right onto Grange Avenue. Turn left onto Lindsay Road. Turn right onto Wharfedale Crescent. Turn right onto Ashlea Close.

These particulars, whilst believed to be accurate are set out as a general outline only for guidance and do not constitute any part of an offer or contract. Intending purchasers should not rely on them as statements of representation of fact, but must satisfy themselves by inspection or otherwise as to their accuracy. No person in this firms employment has the authority to make or give any representation or warranty in respect of the property.