

# Eastcote Place

Pinner • • HA5 2EL

PCM: £2,300 PCM



coopers  
est 1986



Welcome to this exquisite two-bedroom luxury apartment located in the prestigious Eastcote Place, Pinner. This stunning property boasts a mansion block setting, offering a touch of elegance and charm. One of the highlights of this property is the beautifully landscaped communal gardens, providing a serene escape from the hustle and bustle of city life. Don't miss the opportunity to make this flat your new home. With its prime location, luxurious features, and charming surroundings, this property is sure to captivate those seeking a blend of comfort and sophistication.

1042 sqft

Two Bedroom

Sought After Location

Beautiful Communal Gardens

Extremely Spacious

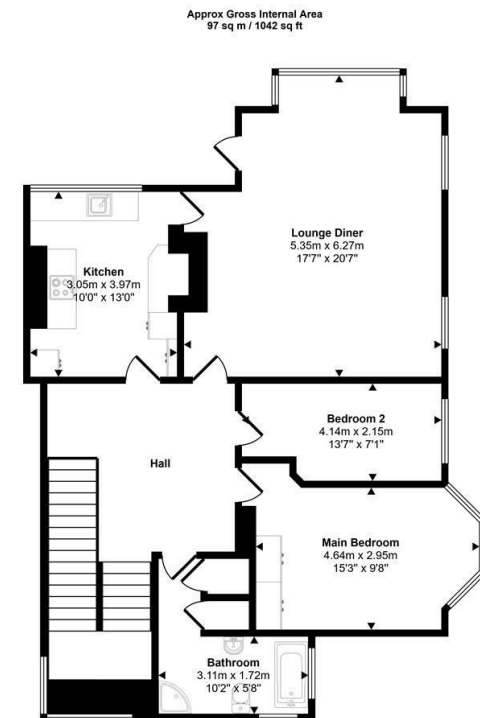
Split Level

Private Balcony

Council Tax Band D

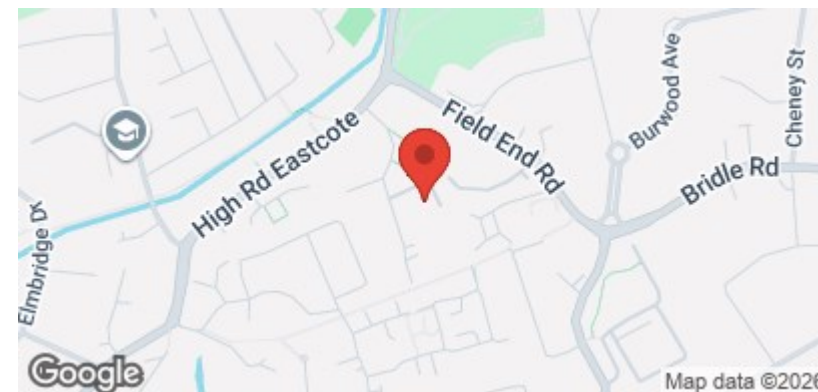
**Available Date**

9th January 2026



Floorplan

This floorplan is only for illustrative purposes and is not to scale. Measurements of rooms, doors, windows, and any items are approximate and no responsibility is taken for any error, omission or mis-statement. Icons of items such as bathroom suites are representations only and may not look like the real items. Made with Made Snappy 360.

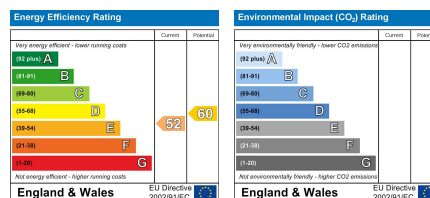


**coopers**  
est 1986

**01895 625 625**

126-128 High Street, Ruislip,  
Middlesex, HA4 8LL  
rl@coopersresidential.co.uk

**CoopersResidential.co.uk**



Important Notice: These particulars, whilst believed to be accurate are set out as a general outline only for guidance and do not constitute any part of an offer or contract. Intending purchasers should not rely on them as statements or representation of fact, but must satisfy themselves by inspection or otherwise has the authority to make or give any representation or warranty in respect of the property.