

# first for homes

first for property in fife - [firstforhomes.co.uk](https://www.firstforhomes.co.uk)

Contact Allan England's Team

01592 752 944



West March Street, Kirkcaldy

**Offers over £101,995**

# West March Street, Kirkcaldy

Beautifully Upgraded 2 Bed 1st Floor Apartment With Lovely Rear Gardens!

Allan England's award winning team at first for homes are proud to welcome to the market this move-in condition 2 bed Upper Apartment situated within a desirable area of Kirkcaldy. The property forms an ideal first time buyer offering tastefully decorated accommodation throughout comprising: spacious lounge, kitchen, 2 double bedrooms and shower room. Externally, there are lovely landscaped rear gardens and street parking. Early viewing is essential to ensure you don't miss out!

HOME REPORT VALUE £105,000

EPC RATING C

COUNCIL TAX BAND B

Call first for homes - first for trust... first for service... first for aftercare!



**SITUATION** - The popular coastal Town of Kirkcaldy has a wide range of services including shopping, banking, schools and a host of recreational facilities such as the stunning Beveridge Park and the Adam Smith Theatre. For the commuter Kirkcaldy boasts a mainline train station and the A92 road link giving access to Edinburgh and all major local towns.

**INFORMATION** - These particulars are prepared on the basis of information provided by our clients. We have not tested the electrical system or appliances, nor where applicable, any central heating system. All sizes are recorded by electronic tape measurements to give an indicative, approximate size only. Prospective purchasers should make their own enquiries - no warranty is given or implied. This schedule is not intended to, and does not form any contract.





**SITUATION - Kirkcaldy**

**ENTRANCE HALL**

**FAMILY LOUNGE**

15'1" x 11'7" approx. (4.62m x 3.55m approx.)

**KITCHEN**

11'11" x 11'3" approx. (3.65m x 3.44m approx.)

**BEDROOM 1**

12'11" x 12'0" approx. (3.96m x 3.68m approx.)

**BEDROOM 2**

12'11" x 8'11" approx. (3.94m x 2.72m approx.)

**SHOWER ROOM**

6'0" x 5'7" approx. (1.85m x 1.72m approx.)

**GARDEN GROUNDS**

**STREET PARKING**

**INFORMATION**



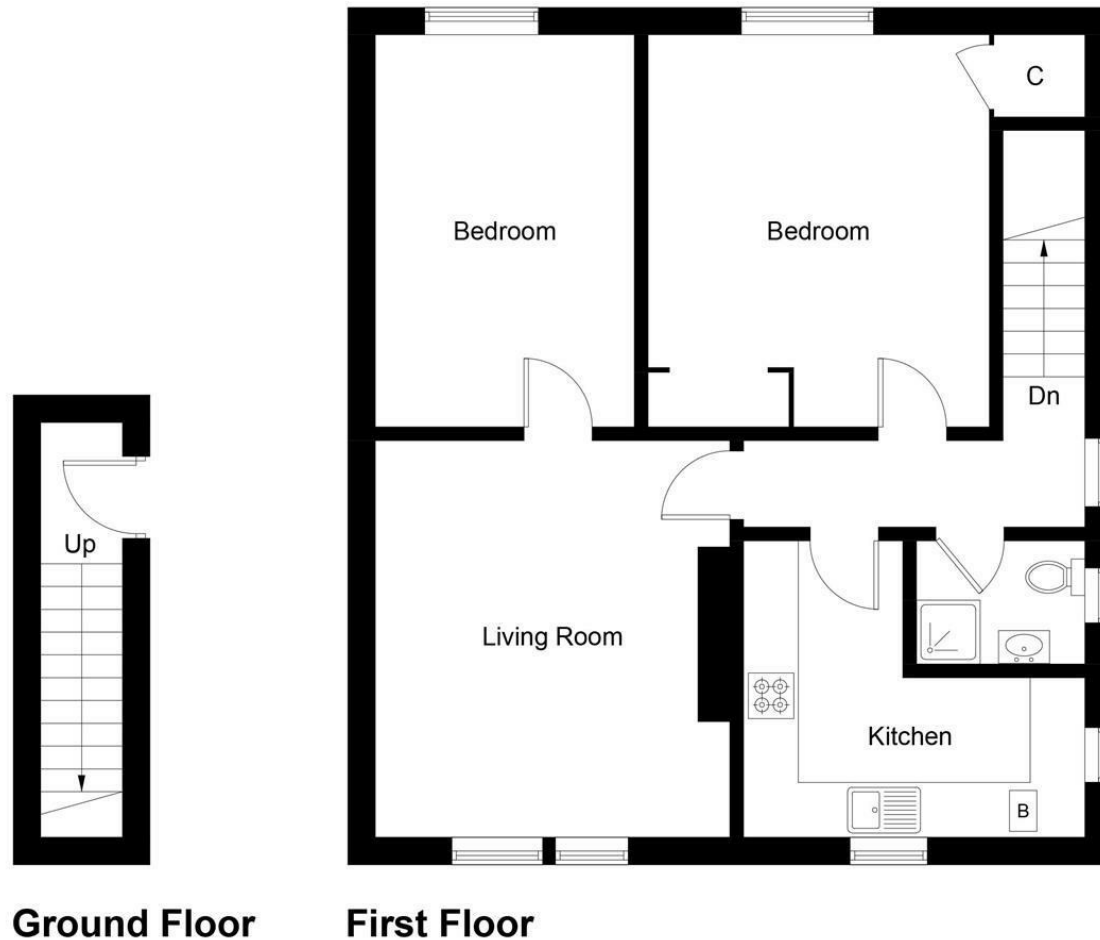


Illustration for identification purposes only, measurements are approximate, not to scale. Fourlabs.co © (ID1288610)

## Information

These particulars are prepared on the basis of information provided by our clients. We have not tested the electrical system or any electrical appliances, nor where applicable, any central heating system. All sizes are recorded by electronic tape measurement to give an indicative, approximate size only. Prospective purchasers should make their own enquiries – no warranty is given or implied. This schedule is not intended to, and does not form any contract.

## FREE Valuation

### Selling Your Home?

Choose first for homes - a highly experienced estate agency team you can trust to sell your home at the highest possible price. Offering fantastic savings on selling fees, with no compromise on service, free professional photography highlighting your home in its best light, first for homes will be your first choice. Contact us today to arrange your appointment.



**first for trust**



**first for service**



**first for aftercare**

**first for homes**  
first for property in life - firstforhomes.co.uk

Contact Allan England's Team  
**01592 752 944**

32 North Street, Glenrothes, Fife KY7 5NA  
Fax: 01592 807947  
sales@firstforhomes.co.uk  
www.firstforhomes.co.uk