



Lindisfarne Lane | Morpeth | NE61 2UL

Offers In Excess Of £399,950

RMS | Rook
Matthews
Sayer



4



2



2

Spacious Family Home

Four Bedrooms

Sought-After Location

Tastefully Decorated

Bright and Spacious Rooms

Fully Enclosed Garden

Substantial Driveway

Freehold

For any more information regarding the property please contact us today



T: 01670 511 711

morpeth@rmsestateagents.co.uk

RMS | Rook
Matthews
Sayer

Nestled within a peaceful area of Morpeth sits this deceptively spacious four bedroomed family home on Lindisfarne Lane. This is an extremely sought-after location with families, not only due to being within walking distance to Stobhill County First School and Morpeth train station, but its proximity to Morpeth town Centre, where you will find an array of local bars, restaurants, weekly town markets and fabulous river walks. Internally the property offers a vast amount of space, with a low maintenance garden to the rear.

The property briefly comprises:- Entrance hallway, impressive bright and airy lounge that has been finished with hard wood flooring and modern décor. The lounge benefits from a large bay window that offers views over the front driveway. There is a separate dining area which is a great space for growing families with ample room for your dining table and chairs. This leads seamlessly into the generous sized conservatory, offering views over the rear garden which can be accessed via the double patio doors. The modern kitchen has been fitted with a range of wall and base units, offering an abundance of storage. Appliances include double electric oven and ceramic hob. You further benefit from separate utility room which has direct access into the converted garage, which is currently used as an office and benefits from a W.C.

To the upper floor of the accommodation, you have four good sized double bedrooms, all offering fantastic space and have been carpeted throughout. The master bedroom benefits from its own en-suite shower room. The modern family bathroom has been finished with a high standard and fitted with basin, W.C and bath with shower attachment.

Externally to the front of the property, you have a substantial driveway which can accommodate at least six cars. Whilst to the rear of the property, you have a fully enclosed low maintenance garden which has that all important Southernly aspect, has been fully paved and comes with your very own hot tub.

This property is sure to impress and we anticipate interest to be high, call now to arrange your viewing.

MEASUREMENTS

Lounge: 16'0 x 16'5 Max Points (4.88m x 5.00m Max Points)
Dining Room: 11'8 x 10'5 (3.59m x 3.18m)
Kitchen: 12'10 x 9'0 (3.91m x 2.74m)
Conservatory: 13'1 x 8'10 (3.99m x 2.69m)
Utility: 7'6 x 10'7 (2.29m x 3.23m)
W.C: 3'4 x 3'10 (1.03m x 0.94m)
Office: 19'1 x 7'0 Max Points (5.82m x 2.13m Max Points)
Bedroom One: 13'1 x 12'8 (3.99m x 3.86m)
Ensuite: 7'5 x 10'1 (2.26m x 3.07m)
Bedroom Two: 13'1 x 8'8 (3.99m x 2.64m)
Bedroom Three: 15'2 x 7'6 Max Points (4.62m x 2.29m Max Points)
Bedroom Four: 15'0 x 7'6 Max Points (4.57m x 2.29m Max Points)
Bathroom: 5'6 x 10'1 (1.68m x 3.07m)

PRIMARY SERVICES SUPPLY

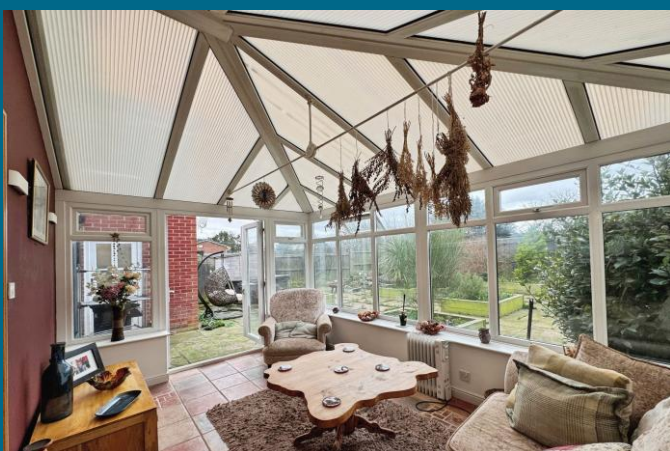
Electricity: Mains
Water: Mains
Sewerage: Mains
Heating: Mains Gas
Broadband: Fibre to Premises
Mobile Signal / Coverage Blackspot: No
Parking: Private Driveway

TENURE

Freehold. It is understood that this property is freehold, but should you decide to proceed with the purchase of this property, the Tenure must be verified by your Legal Adviser.

EPC Rating: C
Council Tax Band: D

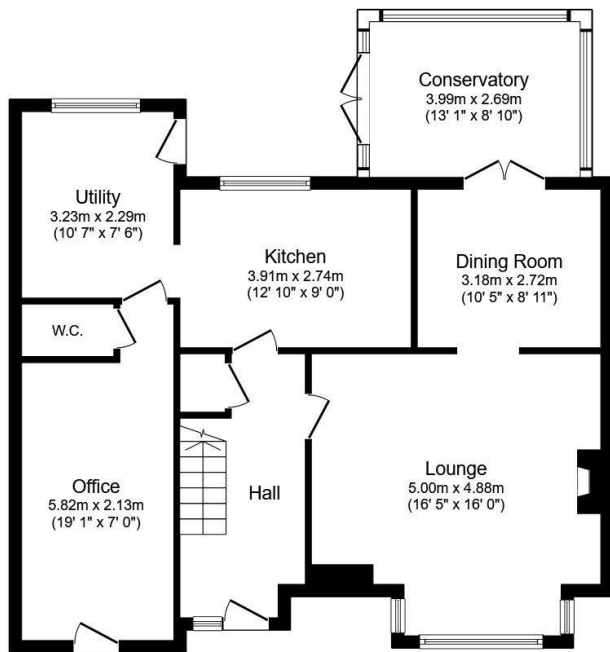
M00008828.LB.JD.02/04/2026.V.3



T: 01670 511 711

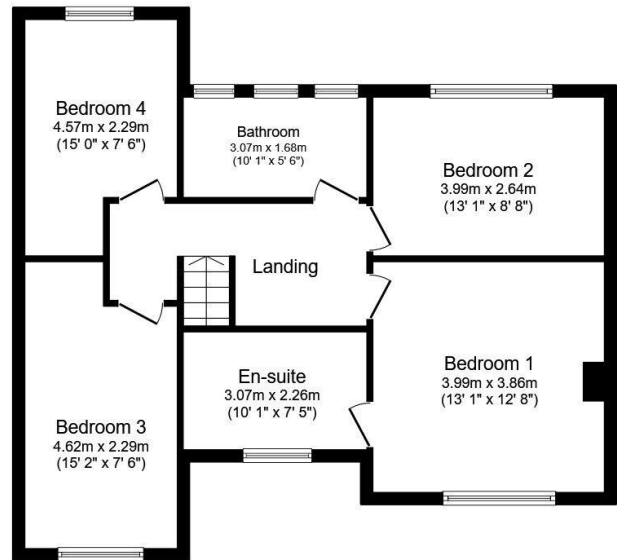
morpeth@rmsestateagents.co.uk

RMS | Rook
Matthews
Sayer



Ground Floor

Floor area 88.5 sq.m. (952 sq.ft.)



First Floor

Floor area 72.0 sq.m. (775 sq.ft.)

Total floor area: 160.4 sq.m. (1,727 sq.ft.)

This floor plan is for illustrative purposes only. It is not drawn to scale. Any measurements, floor areas (including any total floor area), openings and orientations are approximate. No details are guaranteed, they cannot be relied upon for any purpose and do not form any part of any agreement. No liability is taken for any error, omission or misstatement. A party must rely upon its own inspection(s). Powered by www.Propertybox.io

Score	Energy rating	Current	Potential
92+	A		
81-91	B		
69-80	C	70 C	71 C
55-68	D		
39-54	E		
21-38	F		
1-20	G		

Important Note: Rook Matthews Sayer (RMS) for themselves and for the vendors or lessors of this property, whose agents they are, give notice that these particulars are produced in good faith, are set out as a general guide only and do not constitute part or all of an offer or contract. The measurements indicated are supplied for guidance only and as such must be considered incorrect. Potential buyers are advised to recheck the measurements before committing to any expense. RMS has not tested any apparatus, equipment, fixtures, fittings or services and it is the buyer's interests to check the working condition of any appliances. RMS has not sought to verify the legal title of the property and the buyers must obtain verification from their solicitor. No persons in the employment of RMS has any authority to make or give any representation or warranty whatever in relation to this property.

Money Laundering Regulations – intending purchasers will be asked to produce original identification documentation at a later stage and we would ask for your co-operation in order that there will be no delay in agreeing the sale. We will also use some of your personal data to carry out electronic identity verification. This is not a credit check and will not affect your credit score.



T: 01670 511 711

morpeth@rmsestateagents.co.uk

RMS | Rook Matthews Sayer