



R
&L

7 Acresford Road

Donisthorpe | DE12 7PT | Guide Price £199,000

ROYSTON
& LUND

- GUIDE PRICE £199,000-£210,000 - *VACANT POSSESSION*
- Spacious Living Room with Fireplace
- Ground Floor Bathroom with Separate WC
- Driveway for Off-Road Parking
- Council Tax A // EPC E
- Three Bedroom Terrace
- Open Kitchen/Dining Room
- South Facing Garden
- Within a short Walk to National Forest Walks and Attractions
- Freehold





GUIDE PRICE £199,000-£210,000 - *Vacant Possession*

Situated in the sought-after village of Donisthorpe, this well-proportioned three-bedroom mid-town house offers generous living space and a truly impressive rear garden.

The property is entered via a welcoming hallway with stairs rising to the first floor. To the front, the spacious lounge is filled with natural light from a large double-glazed bay window and features a charming fireplace with a wooden mantelpiece, complemented by exposed overhead beams that add character to the room.

To the rear, the kitchen enjoys views over the substantial south-facing garden. It is fitted with a range of base and wall units, ample worktop space, and offers room for dining. A useful cupboard provides additional storage or pantry space, while the large window ensures the room feels bright and airy.

A rear hallway leads to the family bathroom and separate WC, as well as providing access to the garden. The bathroom is fitted with a bath and overhead shower, finished with a distinctive dark blue tiled surround.

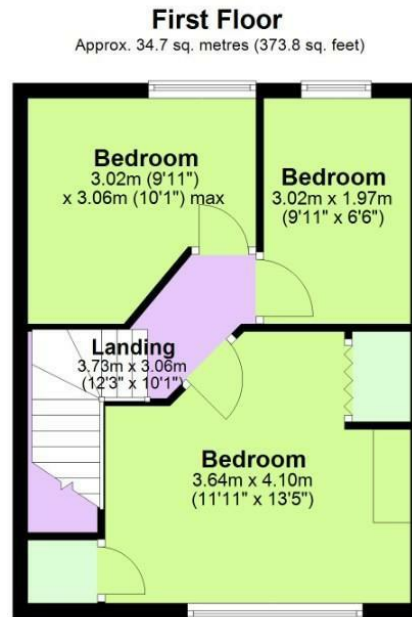
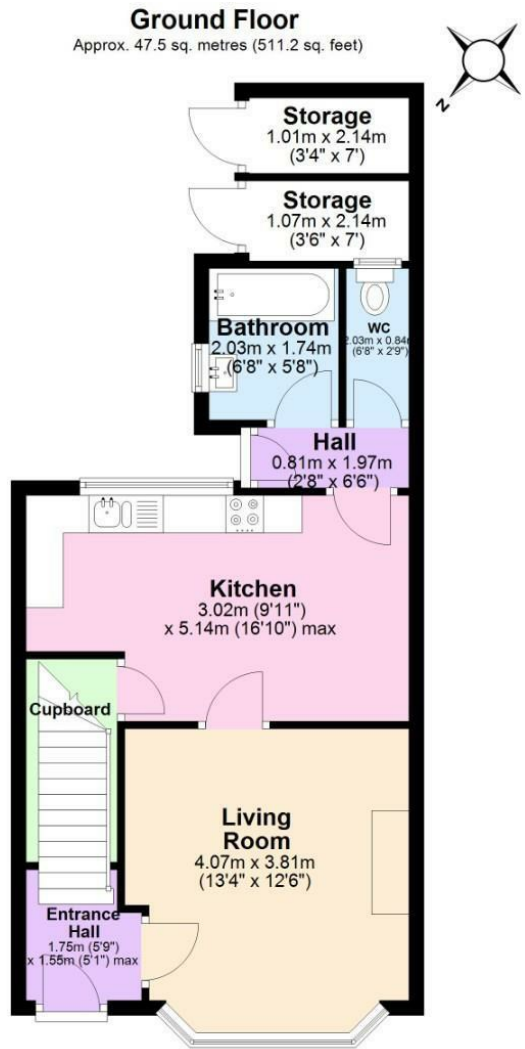
Upstairs, the landing gives access to all three bedrooms. The principal bedroom, located at the front, is a spacious room with two built-in storage areas and a large window, offering plenty of flexibility. The second bedroom, positioned at the rear, is a well-sized double overlooking the garden. The third bedroom is ideal as a guest room, nursery, or home office.

Externally, the standout feature of the property is the generous south facing rear garden, mainly laid to lawn and enclosed by fencing for a high degree of privacy. To the front, there is off-street parking for two vehicles.

Located with a short walk to National Forest walks and attractions.

For More Information: https://reports.sprift.com/property-report/?access_report_id=5210569





Total area: approx. 82.2 sq. metres (884.9 sq. feet)



EPC

Energy Efficiency Rating

	Current	Potential
Very energy efficient - lower running costs		
(92 plus) A		
(81-91) B		
(69-80) C		76
(55-68) D		
(39-54) E	48	
(21-38) F		
(1-20) G		
Not energy efficient - higher running costs		

England & Wales EU Directive 2002/91/EC

Environmental Impact (CO₂) Rating

	Current	Potential
Very environmentally friendly - lower CO ₂ emissions		
(92 plus) A		
(81-91) B		
(69-80) C		
(55-68) D		
(39-54) E		
(21-38) F		
(1-20) G		
Not environmentally friendly - higher CO ₂ emissions		

England & Wales EU Directive 2002/91/EC

These particulars, whilst believed to be accurate are set out as a general outline only for guidance and do not constitute any part of an offer or contract. Intending purchasers should not rely on them as statements of representation of fact, but must satisfy themselves by inspection or otherwise as to their accuracy. No person in this firm's employment has the authority to make or give any representation or warranty in respect of the property.

ROYSTON & LUND