



89 Stride Avenue, Portsmouth

Offers in Region of £300,000

 chinneckshaw



89 Stride Avenue

Portsmouth

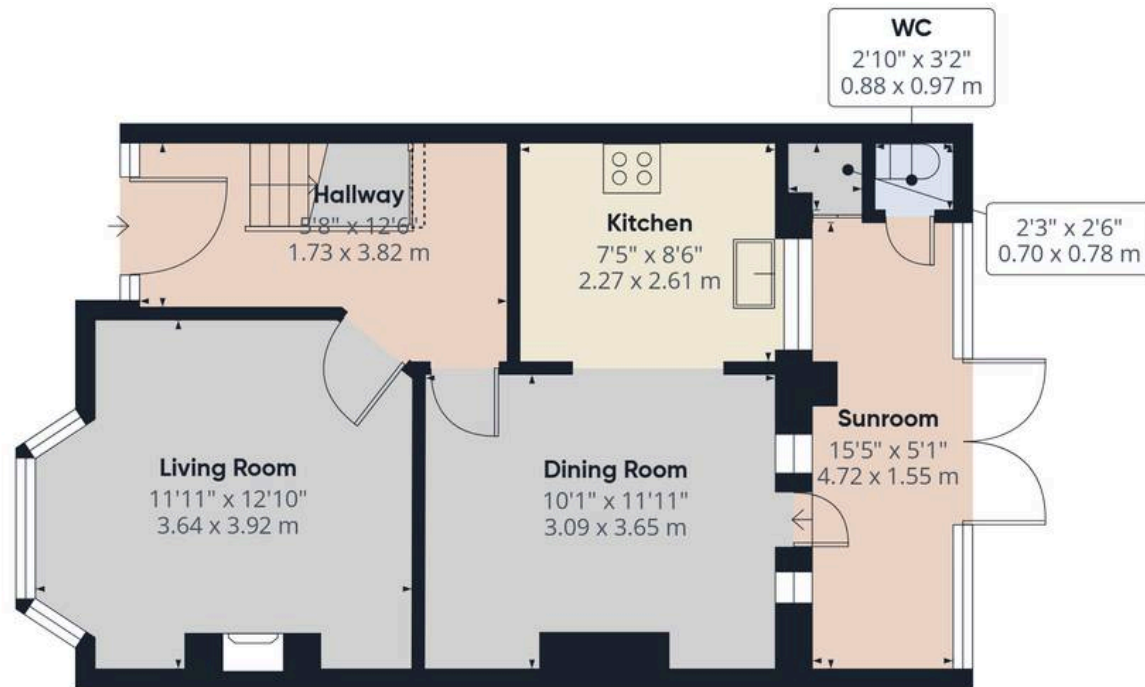
Situated close to Baffins Pond and Milton Common, this inviting three-bedroom home offers both convenience and a strong sense of community. The property features a bright hallway leading to a spacious living area, ideal for relaxing or entertaining. The modern kitchen boasts contemporary fittings and ample storage, seamlessly connecting to the dining area—perfect for everyday meals or catching up with friends and family.

Upstairs, three well-proportioned bedrooms provide flexible living space, suitable for a nursery, home office or a place to unwind. The bathroom is modern and well-presented, offering a clean and functional space for daily use.

The garden is a valuable asset, ideal for relaxing, entertaining or for children to play. There is also a garage and rear access for added storage and convenience. Ready to move into, this home is perfect for families, professionals or first-time buyers seeking a smooth move.

Material Information • Tenure: Freehold • Council Tax: Band C • Electricity: Mains Supply • Heating: Gas • Water Supply: Mains Supply • Sewage: Mains Supply • Broadband: Standard, Superfast and Ultrafast Fibre are all available in this area • Parking: Garage / On Street • Mobile: Ofcom official website checker states that EE, Vodafone, O2 and Three available in the area • Flood Risk: Low Risk

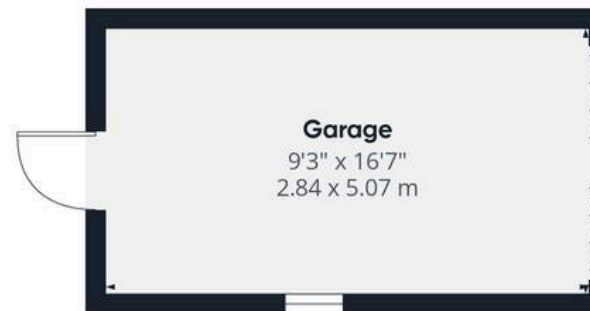




Ground Floor Building 1



Floor 1 Building 1



Ground Floor Building 2

Approximate total area⁽¹⁾

1068 ft²

99.1 m²

Reduced headroom

1 ft²

0.1 m²

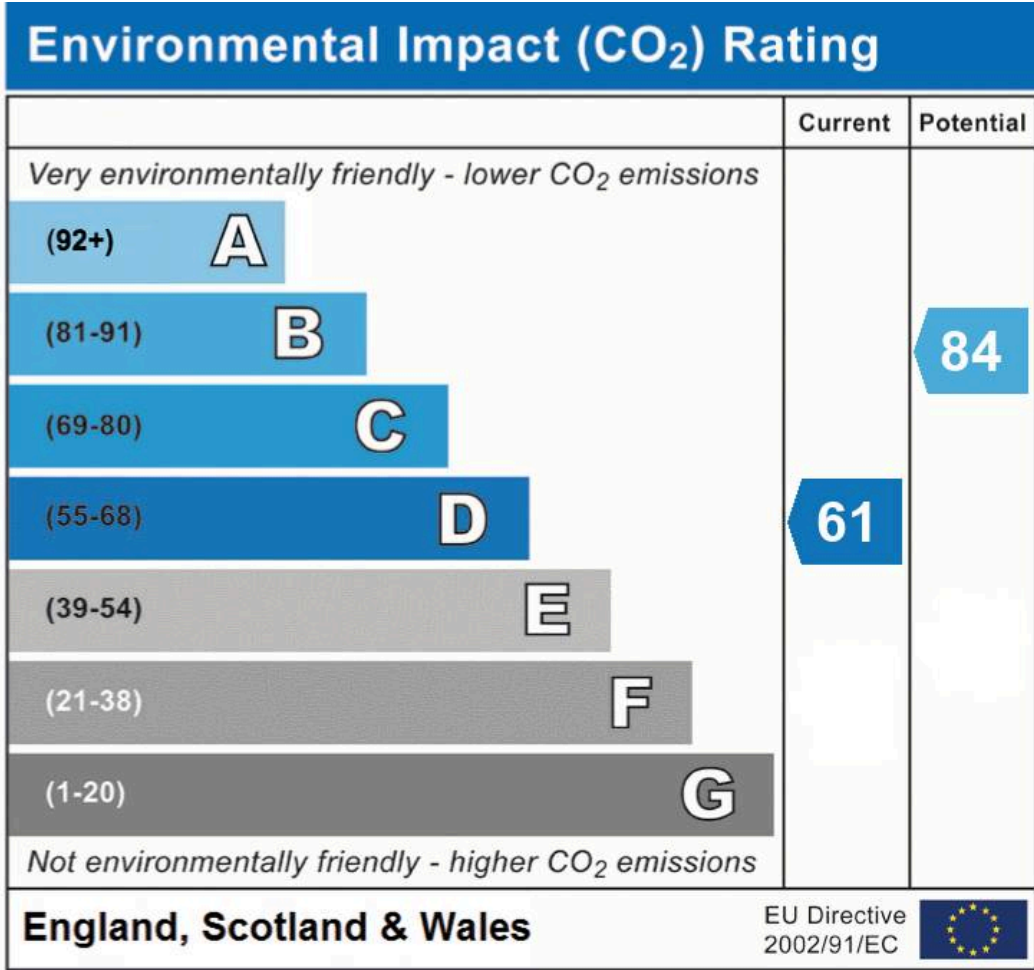
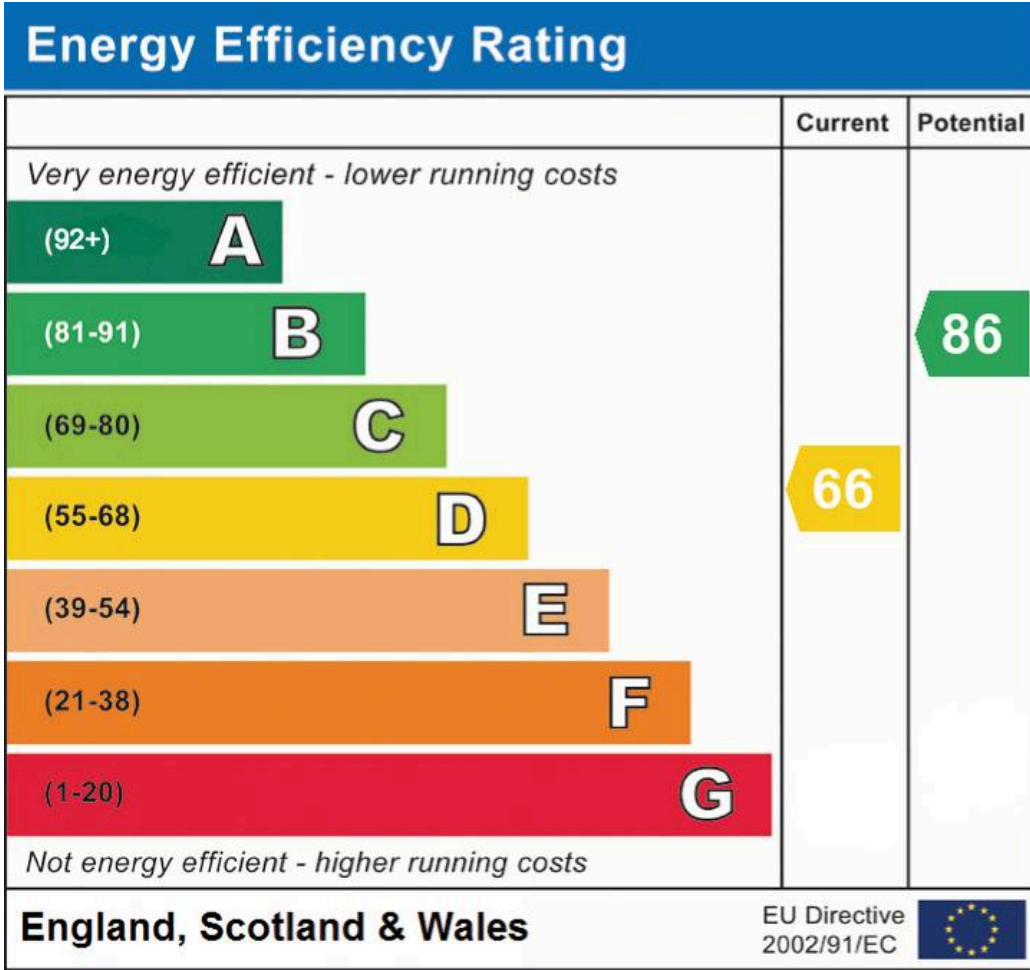
(1) Excluding balconies and terraces

Reduced headroom

----- Below 5 ft/1.5 m

Calculations reference the RICS IPMS 3C standard. Measurements are approximate and not to scale. This floor plan is intended for illustration only.

GIRAFFE360



Chinneck Shaw

Bridge House, Milton Road, Portsmouth – PO3 6AN

023 9282 6731

hello@chinneckshaw.co.uk

www.chinneckshaw.co.uk/

Chinneck Shaw, Bridge House, Milton Road, PO3 6AN Consumer Protection from Unfair Trading Regulations 2008: These details are for guidance only and complete accuracy cannot be guaranteed. If there is any point which is of particular importance, verification should be obtained. They do not constitute a contract or part of a contract. All measurements are approximate. No guarantee can be given with regard to planning permissions or fitness for purpose. No apparatus, equipment, fixture or fitting has been tested. Items shown in the photographs are NOT necessarily included. Interested Parties are advised to check availability and make an appointment to view before travelling to see a property.