

Elm Grove, SW19

£610,000

An incredible two double bedroom, modern mews house, complete with an allocated parking space. The property is arranged over two floors, benefits from a courtyard garden, and is offered with no onward chain.

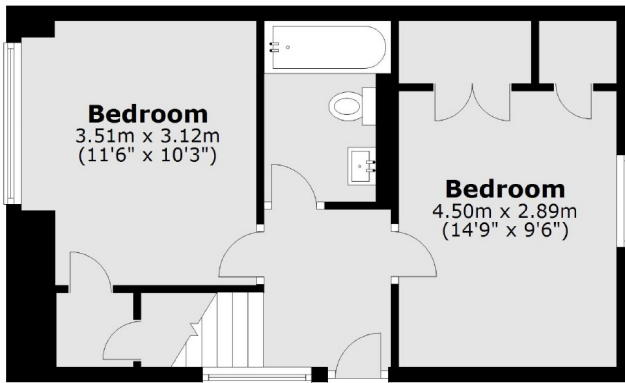
Elm Grove is a cul-de-sac situated just off of Worple Road and just under half a mile walk from Wimbledon Broadway allowing easy access to the town centre's restaurants and shops. Transport links include overground, underground and a number of good bus routes.

Features

- Two Double Bedrooms
- Courtyard Garden
- Freehold Mews House
- Modern Finish
- Acoustic Double Glazing
- No Onward Chain

Elm Grove, London, SW19

Ground Floor



First Floor



Total area: approx. 71.7 sq. metres (771.8 sq. feet)