



## Beechcroft Avenue, KT3

£3,500 Per calendar month

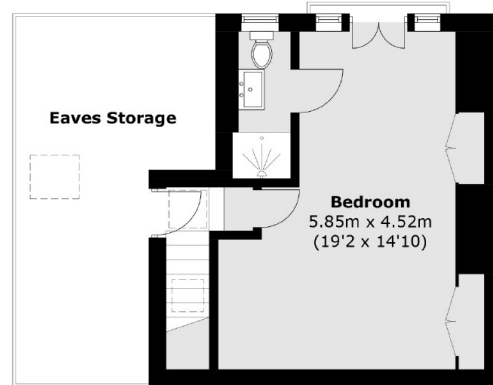
A beautifully presented five bedroom semi detached family home in sought after Coombeside with two reception rooms and four bathrooms (including two en-suites). The property also has off street parking and a large family garden.

Beechcroft Avenue Is a popular residential street moments away from 'The Triangle' and New Malden High Street, New Malden Station, and quick routes to the A3, M25 and links to London. It is nearby to excellent local schools.

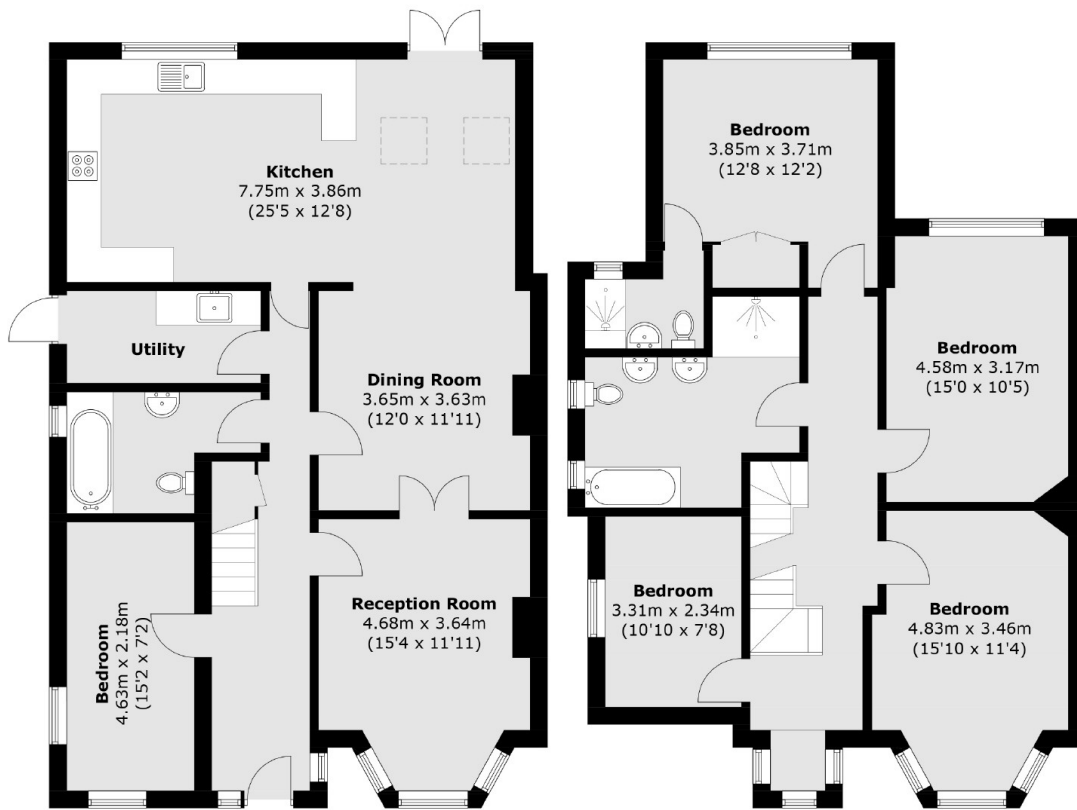
### Features

- Five Bedrooms
- Four Bathrooms
- Three Reception Rooms
- Open Plan Living Space
- Private Garden
- Off Street Parking

# Beechcroft Avenue, New Malden, KT3



**Second Floor**



**Ground Floor**

**First Floor**

Total area (approx.): 209.2 sq. m (2,251.7 sq. ft)