

15 Westbank Road, Withington, Manchester, M20 4SU



JP&Brimelow
ESTATE AGENTS

Offers In The Region Of £295,000




VIDEO TOUR AVAILABLE A delightful THREE DOUBLE BEDROOM, mid terrace property, situated off Briarfield Road in a well-connected residential area of Withington. This property enjoys a highly convenient South Manchester location, within easy walking distance of Mauldeth Road railway station, providing direct access into Manchester city centre and Manchester airport. In brief the well-planned accommodation consists of an entrance hall, a good-sized lounge to the front aspect and a fully-fitted kitchen/diner with access out into the rear enclosed garden. The first floor landing reveals three double bedrooms and a three-piece bathroom suite, completing this home. The property benefits from gas fired central heating, a driveway to the front and a rear enclosed lawned garden. Close in proximity to well-regarded schools, including Ladybarn Primary School and Burnage Academy for Boys, both within walking distance. Internal inspection highly recommended to appreciate this home.





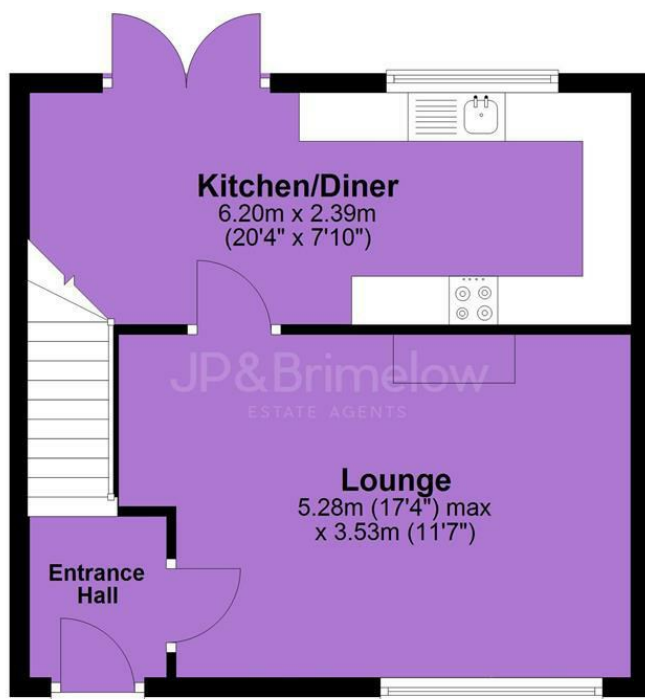
EPC Chart

Energy Efficiency Rating		Current	Potential
<i>Very energy efficient - lower running costs</i>			
(92 plus) A			
(81-91) B			86
(69-80) C		74	
(55-68) D			
(39-54) E			
(21-38) F			
(1-20) G			
<i>Not energy efficient - higher running costs</i>			
England & Wales		EU Directive 2002/91/EC 	

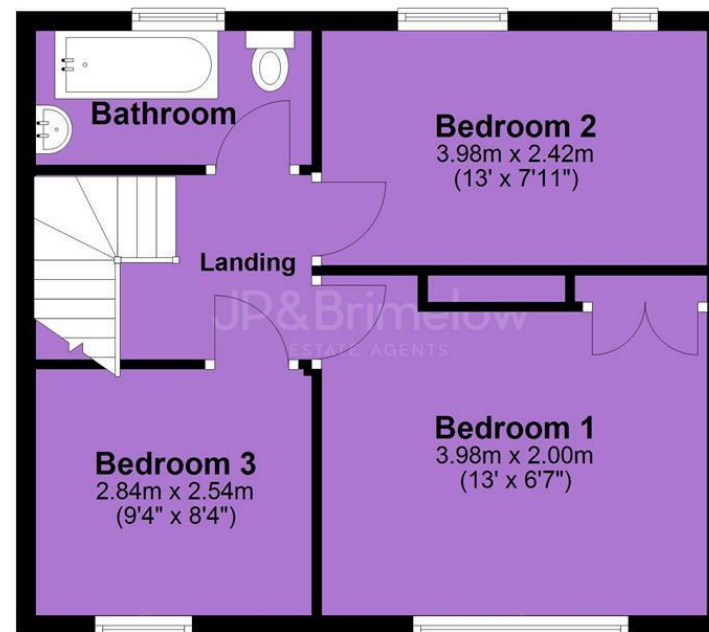


Tenure: **Freehold** Council Tax Band: **A**

Ground Floor



First Floor



JP & Brimelow Estate Agents Ltd
430 Barlow Moor Road, Manchester, M21 8AD
Tel: 0161 8822233
E: sales@jpbrimelow.co.uk www.jpandbrimelow.co.uk



JP & Brimelow
ESTATE AGENTS

NOTICE: JP & Brimelow Estate Agents Ltd for themselves and for the vendors or lessors of this property whose agents they are give notice that:

- (i) the particulars are set out as a general outline only for the guidance of intending purchasers or lessees, and do not constitute, nor constitute part of, an offer or contract;
- (ii) all descriptions, dimensions, references to the condition and necessary permissions for use and occupation, and other details are given in good faith and are believed to be correct but any intending purchasers or tenants should not rely on them as statements or representations of fact but must satisfy themselves by inspection or otherwise as to the correctness of each of them;
- (iii) no person in the employment of JP & Brimelow Estate Agents Ltd has any authority to make or give any representation or warranty whatever in relation to this property.

jpandbrimelowstateagents

@jpandbrimelow