



Castles

ASKING PRICE

**£375,000**

**Village Park Close**

Enfield, EN1 2SG Share of Freehold



## PROPERTY SUMMARY

A two bedroom ground floor purposed built apartment located on a well regarded gated development on Village Road, within approximately 0.5m of Bush Hill Park Train Station. The property offers spacious accommodation. Viewing is recommended.

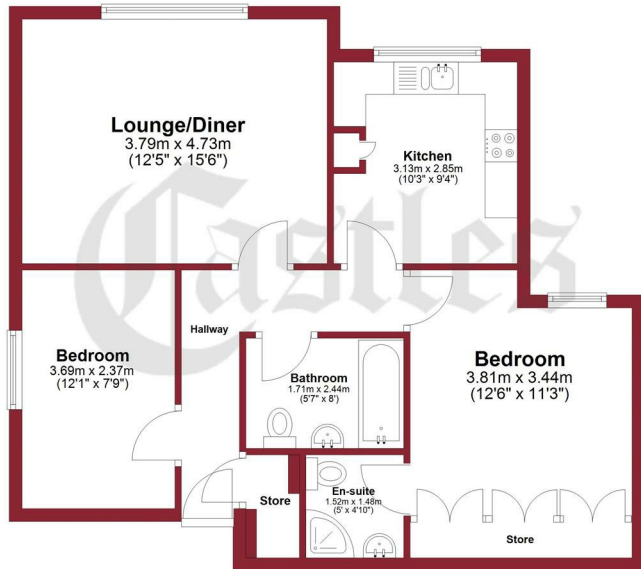








## Ground Floor



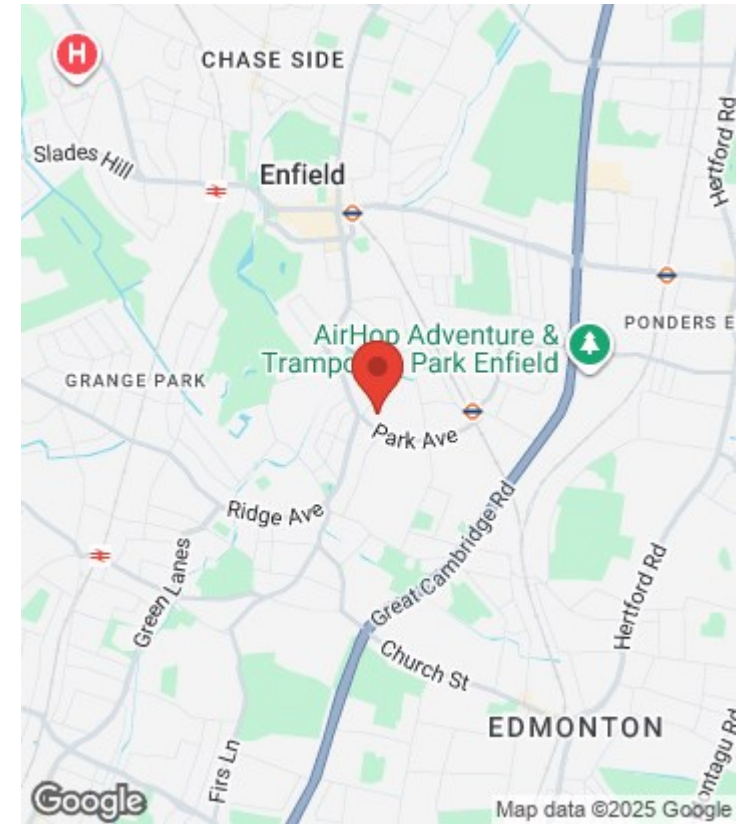
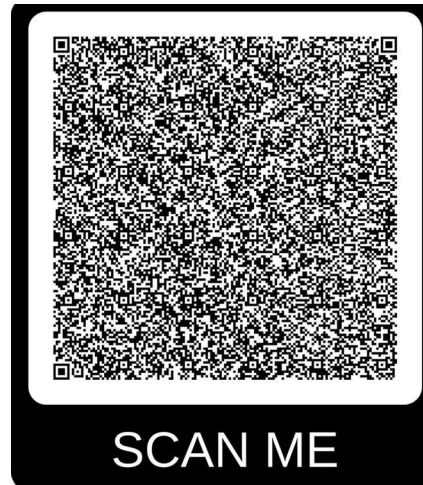
Total area: approx. 66.2 sq. metres (712.9 sq. feet)

All measurements have been taken as a guide to prospective buyers only and are not precise. This plan is for illustrative purposes only and no responsibility for any error, omission or misstatement. The services, systems and appliances shown have not been tested and no guarantee as to their operability or efficiency can be given.

Measurements may have been taken from the widest area and may include wardrobe/cupboard space. No guarantee is given to any measurements including total areas. Buyers are advised to take their own measurements.

© @modephotouk | www.modephoto.co.uk  
Plan produced using PlanUp.

For a guide to the area  
please scan this code for  
more information



Flat

Leasehold - Share of Freehold

**Council:** Enfield **Service Charge:** £1,200 P/A

**Council Tax Band:** E **Ground Rent:** £N/A

**Lease:** 125 years from 01/01/1994

Agents Note: Whilst every care has been taken to prepare these particulars, they are for guidance purposes only. All measurements are approximate and are for general guidance purposes only and whilst every care has been taken to ensure their accuracy, they should not be relied upon and potential buyers/tenants are advised to recheck the measurements



## OFFICE ADDRESS

243 - 245 Hertford Road  
Enfield  
London  
EN3 5JJ

## OFFICE DETAILS

0208 804 8000  
enfield@castles.london  
<https://www.castles.london>

