



PERIOD
HOMES

Meadow View, Green Street, Ingatestone. CM4 0NS

Guide Price £1,750,000 – £1,800,000

Meadow View Green Street

Ingatestone, Ingatestone

GUIDE PRICE £1,750,000 – £1,800,000. Set in complete privacy and surrounded by open countryside, this charming five-bedroom home sits on a plot of 0.75 acres.

Council Tax band: G

Tenure: Freehold

EPC Energy Efficiency Rating: E

EPC Environmental Impact Rating:





Meadow View Green Street

Ingatestone, Ingatestone

GUIDE PRICE £1,750,000 - £1,800,000

This is Fryerning at its most peaceful and picturesque.

Set in complete privacy and surrounded by open countryside, this charming five-bedroom home sits on a plot of 0.75 acres in much sought-after Green Street, Fryerning.

The property's characterful facade hints at the warmth found throughout the home. Inside, a central hallway leads to a selection of bright, well-proportioned reception rooms, including a generous lounge with triple-aspect and a feature fireplace. The drawing room and conservatory offer additional relaxation space, both enjoying views over the wonderful gardens.

The heart of the home is the Clive Christian country-style kitchen/diner finished with warm terracotta tiles and an Aga, offering a perfect family and social space. A boot room, utility room and ground-floor cloakroom complete the ground floor accommodation.

Upstairs, the property continues to impress with five bedrooms, including a principal suite complete with built in wardrobes and en-suite. The family bathroom is luxuriously appointed, featuring a walk-in shower and freestanding bath.

Outside, the property is approached via a large, gated driveway providing ample parking and access to a detached double garage. The gardens are a particular feature - beautifully









GREEN STREET

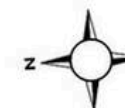
Approx. Gross Internal Area 280.3 Sq M (3016.6 Sq Ft)



PERIOD
HOMES

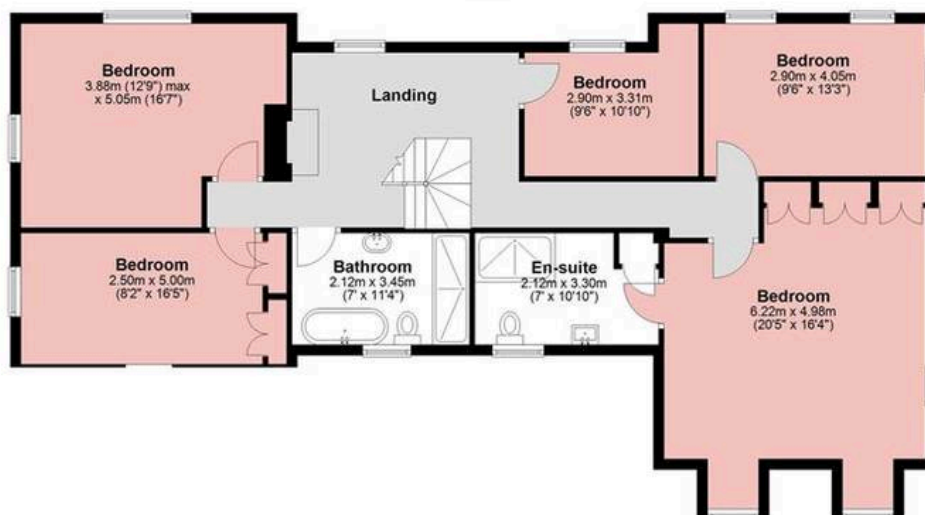
Ground Floor

Approx. 137.0 sq. metres (1474.4 sq. feet)



First Floor

Approx. 116.0 sq. metres (1248.4 sq. feet)



Garage

Approx. 27.3 sq. metres (293.8 sq. feet)



Measurements are approximate and for illustration purposes only. While we do not doubt the accuracy and completeness, we advise you conduct a careful independent assessment of the property to determine monetary value.

© @modephoto.uk www.modephoto.co.uk

About Us

From charming cottages to country estates, all our homes have a story to tell. 'Period Homes' is one of a kind, an agency dedicated to the sale of character and period properties across Essex.

If you would like to buy a period home but you have a modern home to sell first, we can assist via our sister company, Walkers, which just so happens to have been voted Britain's Best Estate Agency in the British Property Awards. That way, both elements of your move are in the very best of hands.

Get In Touch



Browse Properties



PERIOD
HOMES

Pst... Have you heard of
discreet marketing?

Many people lose out on their dream home to someone in a better position.

Often, it is because they have delayed putting their house on the market, preferring to find somewhere first and then sell.

That is why we have innovated a totally unique and high confidential moving home solution to put you in a competitive position.

Let us find you a buyer without any advertising or pressure and without the neighbours knowing.

Your secret is safe with us...

Get in touch for a
complimentary valuation.

Looking To Sell Or Let Your Home?

Book your free valuation to see how much your home is worth.

Contact Us

01277 288000



Our Website

periodhomes.co.uk



Our Address

Eaton House

High Street

Ingestone

CM4 9DW

