



jordan fishwick

WEST DIDSBURY
Georgia Avenue



Georgia Avenue, West Didsbury, M20 1LX

Guide Price £215,000



The Property

A **STYLISH** two bedroom apartment forming part of a popular development in **WEST DIDSBURY**, close to Burton Road & The Metrolink.

Enjoying double glazed windows and electric heating, the living space includes an open plan living/kitchen with a defined lounge area and fitted kitchen with a range of units and integrated appliances, a main bedroom with ample space for freestanding furniture, a further second bedroom and the generous bathroom, with white suite and tiled floors & walls. In addition, there is a generous hallway with useful utility cupboard. The flat is accessed from an elevated decked area and has its own allocated parking space.

The development itself is widely sought after for its proximity to the vibrant centre of West Didsbury and Burton Road's array of bars, restaurants and shops, and of course the Metrolink, with stops within close proximity.

Directions

M20 1LX



- Stylish apartment
- Second floor position
- Two bedrooms
- Open plan living/kitchen
- Generous tiled bathroom
- Double glazed windows
- Electric heating
- Allocated parking
- Great location in West Didsbury
- Close to Burton Road & the Metrolink

Postcode - M20 1LX

EPC Rating - C

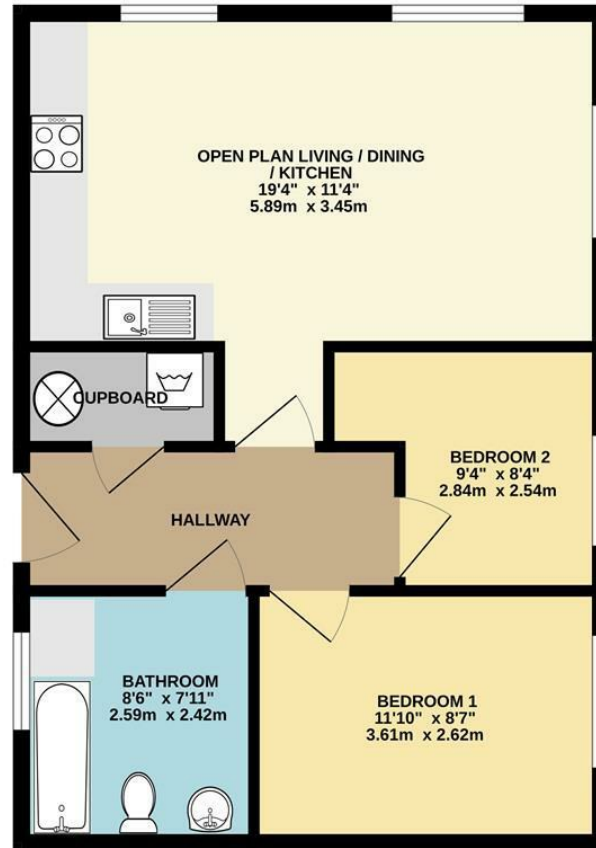
Floor Area - 560.00 sq ft

Local Authority - Manchester City Council

Council Tax - C



560 sq.ft. (52.0 sq.m.) approx.



TOTAL FLOOR AREA : 560 sq.ft. (52.0 sq.m.) approx.
Measurements are approximate. Not to scale. Illustrative purposes only
Made with Metropix ©2026



These particulars are believed to be accurate but they are not guaranteed and do not form a contract. Neither Jordan Fishwick nor the vendor or lessor accept any responsibility in respect of these particulars, which are not intended to be statements or representations of fact and any intending purchaser or lessee must satisfy himself by inspection or otherwise as to the correctness of each of the statements contained in these particulars. Any floorplans on this brochure are for illustrative purposes only and are not necessarily to scale.

Offices also at: Wilmslow, Macclesfield, Hale, Sale, Chorlton, Glossop, Manchester & Salford

757-759 Wilmslow Road, Didsbury Village, Manchester

0161 445 4480

didsbury@jordanfishwick.co.uk
www.jordanfishwick.co.uk