



GLENGALL ROAD, NW6

£675,000

Chain Free
Two Double Bedrooms
Two Bathrooms
School Conversion
High Ceilings circa 16ft
Gated & Covered Car Park

@marshandparsons
marshandparsons.co.uk

MARSH &
PARSONS

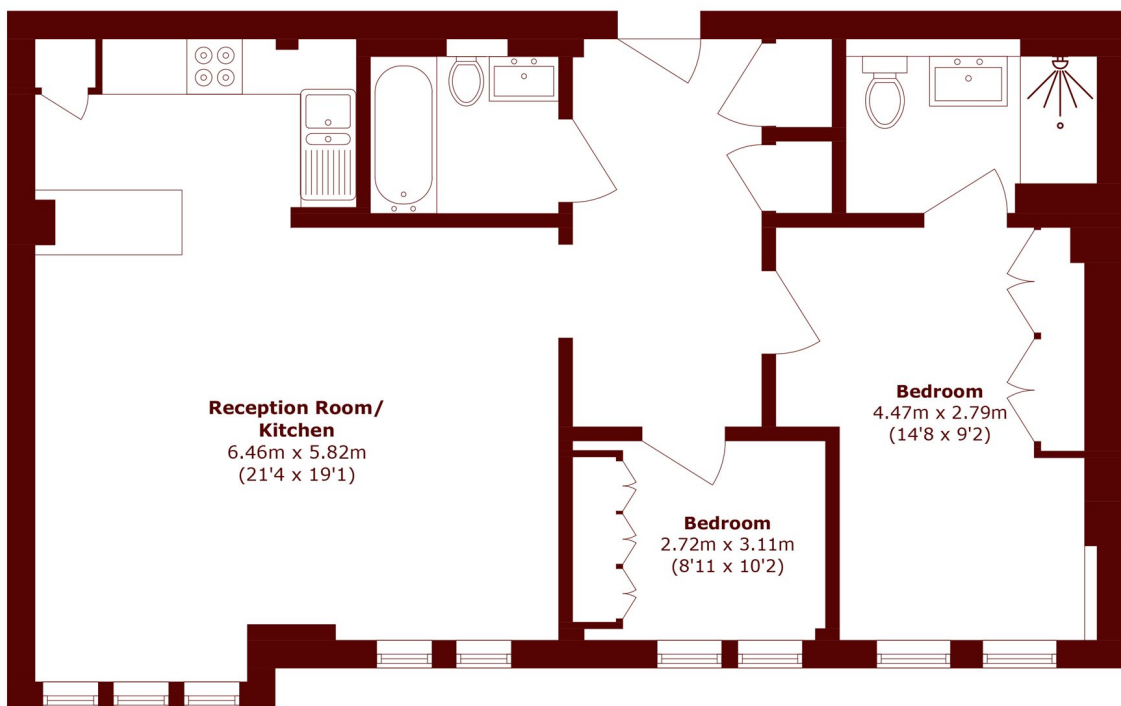


ABOUT THE PROPERTY

This exceptional two-bedroom, two-bathroom second-floor flat is set within an attractive red-brick listed building, formerly a school and combines striking character with contemporary living. The apartment is defined by its impressive high ceilings and expansive windows, flooding the space with natural light throughout the day thanks to its bright southerly-facing aspect. Finished to a high modern standard, the interior offers a stylish and practical layout with generous built-in storage and well-proportioned rooms, ideal for both everyday living and entertaining. The sense of space and light is further enhanced by the building's original architectural features, creating a truly unique home. The property is offered with a share of freehold, secure allocated parking



STEP INSIDE GLENGALL ROAD



Total area (approx.): 75.9 sq. m (808.2 sq. ft)

Queen's Park
020 7624 4513

Energy Rating: C We aim to make our particulars both accurate and reliable. However, they are not guaranteed; nor do they form part of an offer or contract. If you require clarification on any points then please contact us, especially if you're traveling some distance to view. Please note that appliances and heating systems have not been tested and therefore no warranties can be given as to their good working order

MARSH &
PARSONS