



Hertford Street, W1J

£4,008 Per calendar month

A two bedroom apartment on the fifth floor of this popular art-deco building with porter and lift. With two similar sized double bedrooms, this apartment is suitable for a couple looking for a spare bedroom or two sharing professionals.

Within the vibrant area of Shepherds Market this building is to the east side of Hertford Street, close to Green Park underground station.

Features

- Two Double Bedrooms
- Two Bathrooms
- Separate Kitchen
- Lift Access
- Porter
- Excellent Location



Hertford Street, W1J

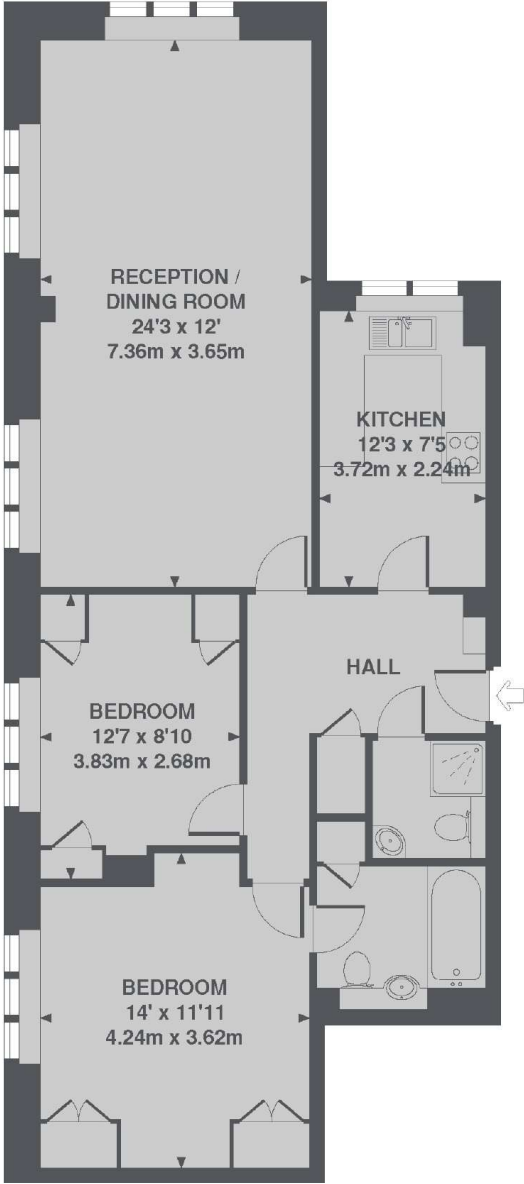
Situated on the fifth floor, this two double bedroom apartment comprises of floor to ceiling wardrobes and large windows with light through the property.

The large reception room is perfect for entertaining guests with a separate kitchen with fitted appliances and two bathrooms ideal for guests or for two sharing professionals.

The property has added benefits of a 24 hour porter, lift access and heating and hot water included within the rental price.



Hertford Street,
London, W1J



5TH FLOOR

TOTAL APPROX. FLOOR AREA 833 SQ. FT. (77.4 SQ. M.)



Wetherell
102 Mount Street
London
W1K 2TH
Lettings
020 7529 5588

Energy Rating: C. We aim to make our particulars both accurate and reliable. However they are not guaranteed; nor do they form part of an offer or contract. If you require clarification on any points then please contact us, especially if you're traveling some distance to view. Please note that appliances and heating systems have not been tested and therefore no warranties can be given as to their good working order.



dexters.co.uk