



JAMES  
ANDERSON



## TO LET

Harrington Gardens, London, SW7

**£3,600 Per Month**

Per Month

A two double bedroom penthouse (with lift) with access to communal gardens in this desirable address in the heart of South Kensington. The property is in very good decorative order with wooden floors throughout and accommodation further comprises of large reception room, eat-in kitchen, two bathrooms. Harrington Gardens is conveniently located close to Gloucester Road underground station (Circle, District and Piccadilly lines) and the wonderful array of local amenities that this area has to offer.



Two Double Bedrooms



Two Bathrooms



Large Reception Room



Modern Kitchen



EPC C / Council Tax G / Holding Deposit £923.07



South Kensington



Split Level



Furnished



Excellent Location



Minimum Term 12 Months / Deposit £4,153.84

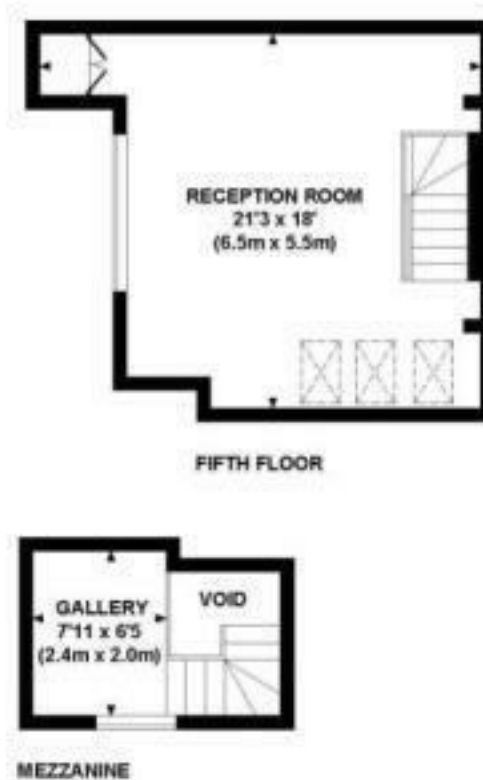


OPEN 7 DAYS A WEEK • Weekdays until 9pm • Weekends until 5pm


0208 785 4400

# HARRINGTON GARDENS, SW7

Approx. gross internal area 1138 Sq Ft. / 105.7 Sq M. Inc. Mezzanine



All measurements are approximate and for illustrative purposes only as defined by the RICS Code of Measuring Practice © 2015. Drawing: Jorvik Design www.jorvikdesign.co.uk 020 7610 9911

Energy Efficiency Rating		
	Current	Potential
Very energy efficient - lower running costs		
(92 plus) <b>A</b>		
(81-91) <b>B</b>		
(69-80) <b>C</b>		
(55-68) <b>D</b>		
(39-54) <b>E</b>		
(21-38) <b>F</b>		
(1-20) <b>G</b>		
Not energy efficient - higher running costs		
	69	74
<b>England &amp; Wales</b>	EU Directive 2002/91/EC 	

Environmental Impact (CO <sub>2</sub> ) Rating		
	Current	Potential
Very environmentally friendly - lower CO <sub>2</sub> emissions		
(92 plus) <b>A</b>		
(81-91) <b>B</b>		
(69-80) <b>C</b>		
(55-68) <b>D</b>		
(39-54) <b>E</b>		
(21-38) <b>F</b>		
(1-20) <b>G</b>		
Not environmentally friendly - higher CO <sub>2</sub> emissions		
<b>England &amp; Wales</b>	EU Directive 2002/91/EC 