

Porchester Square, W2

£525,000

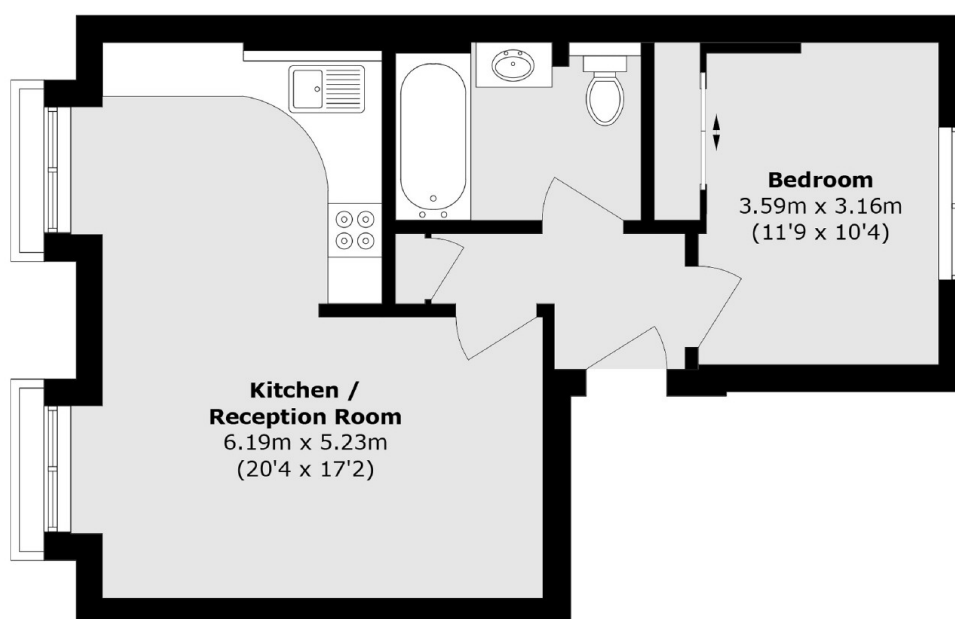
A spacious and well decorated one bedroom apartment located on the raised ground floor in a Victorian period conversion. The property benefits from a south facing open plan reception room overlooking communal gardens, a large bedroom with built in storage and high ceilings throughout. Offers In Excess Of.

Porchester Square is ideally located near a large Waitrose supermarket and the shops of Westbourne Grove and Queensway. The closest transport links are Royal Oak and Bayswater whilst Paddington Station is also a short walk away.

Features

- One Double Bedroom
- High Ceilings
- Refurbished
- Garden Square
- Victorian Conversion
- Close To Amenities

Porchester Square, London, W2



Total area (approx.): 47.2 sq. m (508.1 sq. ft)