

134D Wisbech Road - Offers In Excess Of £260,000

Littleport Ely CB6 1JJ

shires

Estate & Letting Agents



"Consistently providing outstanding service to our clients"

Offers In Excess Of £260,000

The Property

This well-presented three-bedroom end-of-terrace home is located in the highly desirable village of Littleport, Cambridgeshire. Littleport offers a range of local amenities and is a fantastic choice for commuters, with its own train station providing convenient transport links.

The property offers comfortable and practical living throughout, with an inviting entrance hall leading into a spacious kitchen/dining area, ideal for both everyday family life and entertaining. There is also a comfortable living room and a convenient ground-floor cloakroom.

Upstairs, there are three well-sized bedrooms, including a main bedroom with its own en-suite shower room, along with a separate family bathroom.

Outside, the home benefits from a driveway providing off-road parking, while the enclosed rear garden is low-maintenance and bordered by mature trees, creating a private and pleasant space to relax and unwind.

Combining comfort, practicality and a sought-after village location, this lovely home would make an ideal family property or investment opportunity.

Agents Note

Please be aware that images of the property may have been digitally enhanced, edited, or staged using artificial intelligence, and may not reflect the current presentation or furnishings.

Why We Love It!

It's ready to go - just pack your bags and move straight in! There are also three bathrooms, so everyone gets their own. No morning queue for the shower here! And that garden looks fabulous, perfect for a summer BBQ... or even a winter one, with a coat and mittens!

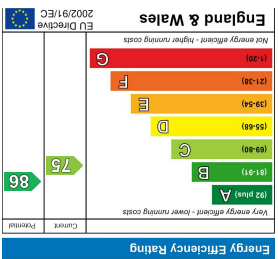
Features

- **THREE-BEDROOM END-OF-TERRACE HOUSE**
- **CLOSE TO TRAIN STATION**
- **WELL-PRESENTED THROUGHOUT**
- **SPACIOUS KITCHEN/DINING AREA**
- **COMFORTABLE LIVING ROOM**
- **MAIN BEDROOM WITH EN SUITE**
- **DRIVEWAY WITH OFF-ROAD PARKING**
- **ENCLOSED GARDEN WITH TREES FOR PRIVACY**
- **IDEAL FOR FIRST TIME BUYERS OR GROWING FAMILIES**
- **CALL SHIRES TO VIEW**

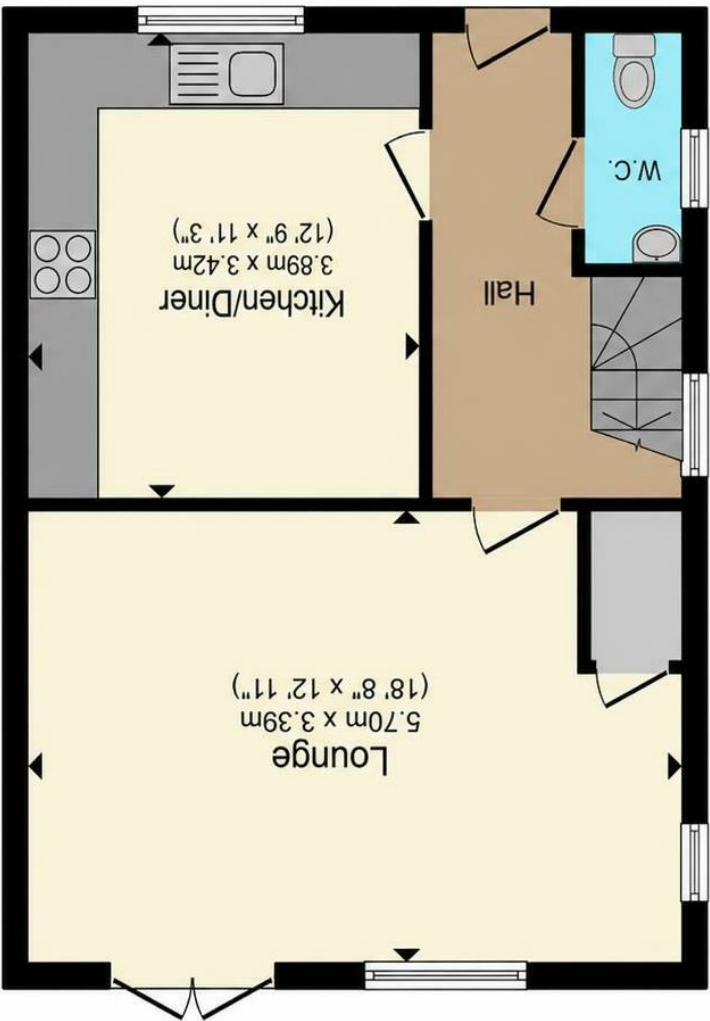




These sales particulars have been produced as a general guide only and we would draw to your attention that we have not carried out a detailed Survey of the property nor have we tested services, appliances or specific fittings. Whilst measurements and statements given within the details are provided in good faith, their accuracy should not be relied upon. If there are any points about which you may be uncertain or would like further clarification, we would suggest that you telephone this office and speak to our staff who will endeavour to assist you.



Ground Floor



First Floor

