



3 Chesham Drive, New Longton
Preston

Offers Over **£200,000**



3 Chesham Drive

New Longton, Preston

A spacious ****NO CHAIN**** 2-bed true bungalow in sought-after New Longton with lounge, kitchen diner, driveway & garage. Close to village amenities, rural walks & top school, with potential to extend (STPP).

Council Tax band: C

Tenure: Freehold

EPC Energy Efficiency Rating: C

EPC Environmental Impact Rating:

- Two Bedroom True Bungalow – Rare single-storey living opportunity in the desirable village of New Longton.
- Spacious Front Lounge with Natural Light
- Driveway with Ample Off-Road Parking
- Detached Garage with Storage or Workshop Potential
- Walking Distance to Village Amenities
- Potential to Extend or Add Dormer (STPP)
- Two Bedroom True Bungalow in Sought-After Village Setting
- Up-Front Searches Provided – Buyers Information Pack available, helping streamline the purchase and reduce delays
- Sold with ****NO CHAIN****

Entrance Hallway

Loft access.

Kitchen/Diner

Good range of eye and low-level units including stainless steel sink. Integrated appliances including electric oven and gas hob with extractor fan. Space for free standing fridge/freezer. Space plumbed for washer/dryer. Space for dining. Door to side. Window to rear.

Lounge

Gas fire. Bay window to front.

Bedroom One

Window to rear.

Bedroom Two

Window to front.

Bathroom

Three piece suite including panelled bath with electric shower over. Pedestal wash hand basin and W.C. Fully tiled walls. Tiled floor. Window to side.

Garage

Detached single garage.



REAR GARDEN

Landscaped garden to rear mainly laid to lawn with some mature trees and planting beds to rear.

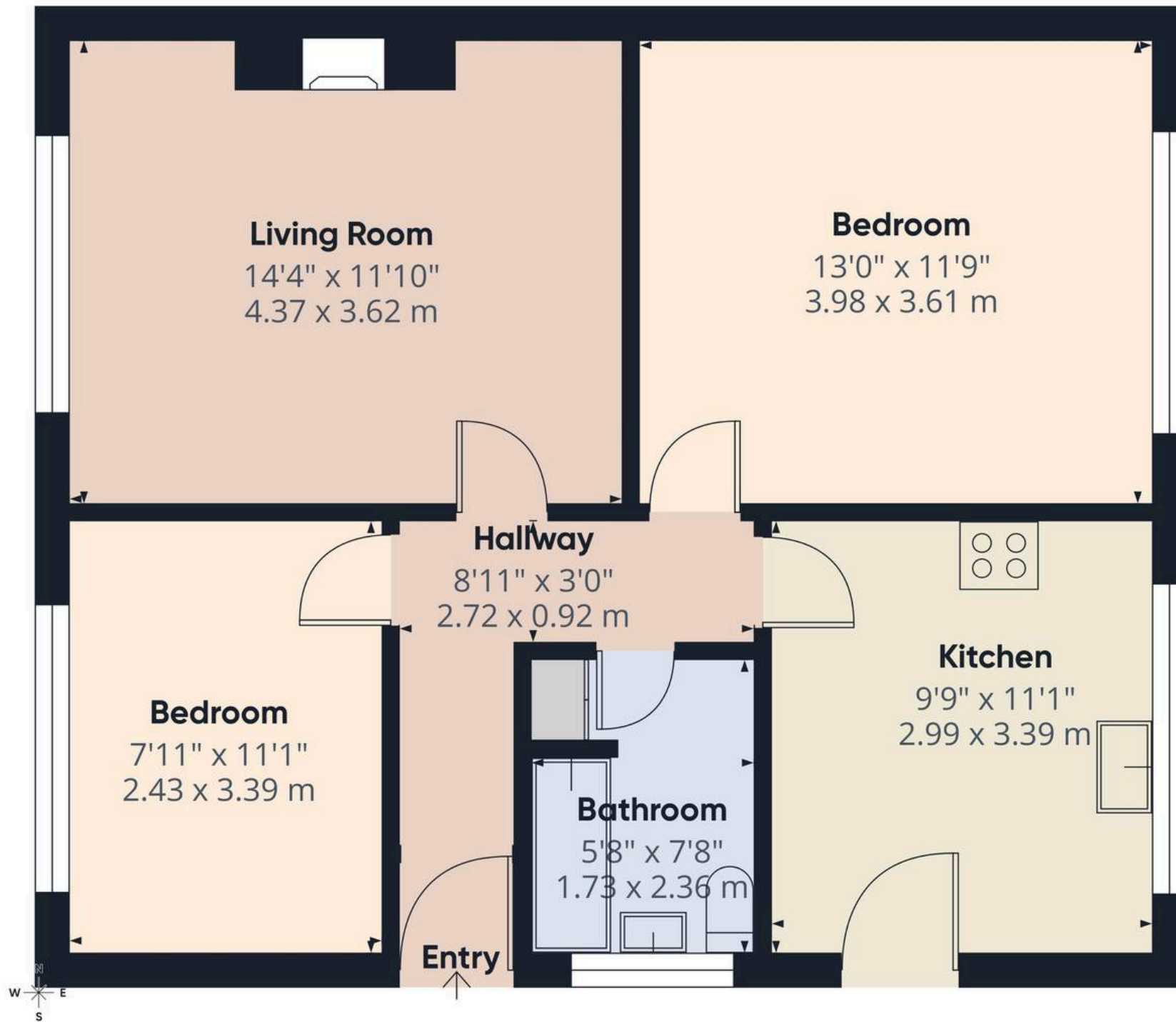
DRIVEWAY

2 Parking Spaces

Dedicated off-road parking for 2 vehicles.







Approximate total area⁽¹⁾

623 ft²

57.8 m²

(1) Excluding balconies and terraces

Calculations reference the RICS IPMS 3C standard. Measurements are approximate and not to scale. This floor plan is intended for illustration only.

GIRAFFE360

ESTATE AGENCY- REDEFINED



At MovingWorks, we're not just another estate agent.

We're a proudly independent, family-run business, founded in 2000 to do things differently – and better.

Buying a home is one of life's biggest milestones. It's emotional, personal, and deserves expert support every step of the way.

Why buyers choose us:

We're a marketing agency, not just a listing service. We match you with the right home and guide you through the process with care and clarity.

With Gazeal, you can reserve your chosen property and protect your purchase from delays or fall-throughs. It shows you're a committed buyer – giving you peace of mind and a stronger position.

We also help you get legally ready, so you can move quickly and with confidence.

At MovingWorks, we combine strategy with genuine care – putting people before process to make your move smooth, secure, and stress-free.

Clients love working with us, check out our reviews to find out for yourself. If you need help selling your home, or know anyone that we could be of service to- please get in touch.



CONTACT US



www.movingworks.co.uk



hello@movingworks.co.uk



[@movingworksestateagentsuk](https://www.instagram.com/movingworksestateagentsuk)



[@mwearlybirdvip](https://www.facebook.com/mwearlybirdvip)



[@movingworks6301](https://www.youtube.com/movingworks6301)



LOVE IT? Secure your offer

COMPLETE THIS FORM AND WE'LL BE IN TOUCH

SCAN

