



8 Chestnut Close  
Codsall, WV8 2EZ

peterjames  
PROPERTY



# 8 Chestnut Close

Codsall – 0.4 miles

Tettenhall – 3.1 miles

(Distances are approximate)

A enviably located 2-bedroom detached bungalow at the very end of a Codsall cul-de-sac.

Hall

Large L-shaped living and dining space

Kitchen

Two double bedrooms

Bathroom

Garage

Store

Considerable front and rear gardens

Driveway parking

Cul-de-sac position



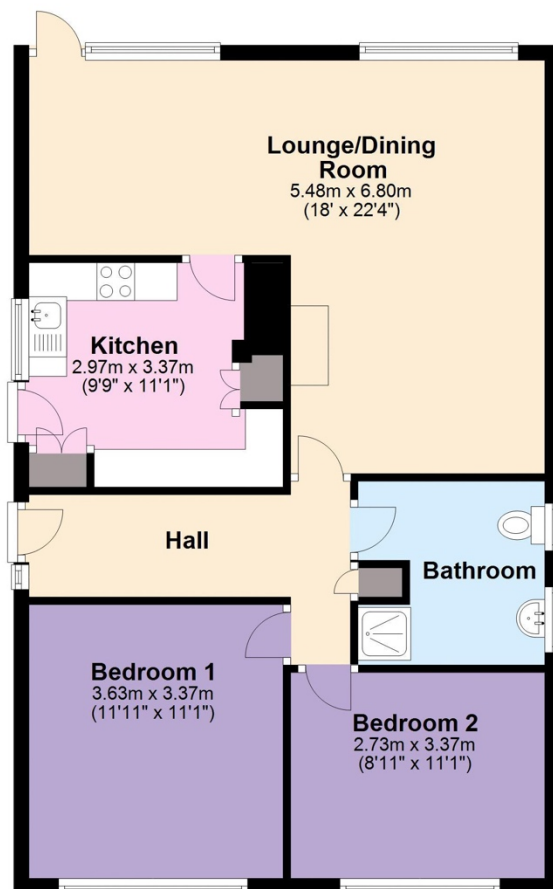






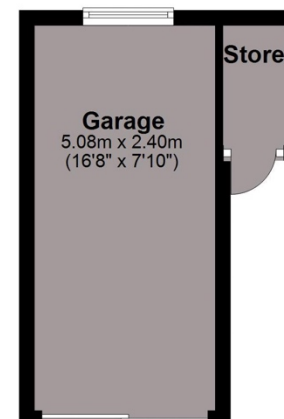
### Ground Floor

Approx. 74.0 sq. metres (796.9 sq. feet)



### Garage

Approx. 13.7 sq. metres (147.5 sq. feet)



Total area: approx. 87.7 sq. metres (944.4 sq. feet)

Measurements are approximate. Not to scale. Illustrative purposes only.  
Plan produced using PlanUp.

**8 Chestnut Close, Codsall**

**EPC** - The EPC is attached to these particulars. If it has become detached or is lost, please contact us for a further copy.

**Fixtures and Fittings** - All carpets and curtains are excluded from the sale but may be available by separate negotiation.

**peterjames**  
PROPERTY

2 High Street, Tettenhall, WV6 8QT

**Tel:** 01902 754777

**Email:** sales@peterjamesproperty.com

**www.peterjamesproperty.com**