



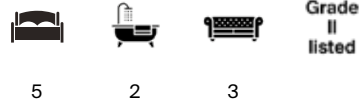
THE THATCHED COTTAGE

Alderton, GL20 8NL



PERIOD PROPERTY IN CENTRAL VILLAGE SETTING

A beautifully restored Grade II listed cottage offering historic charm,
modern comfort, all set within a popular North Gloucestershire
village.



Local Authority: Tewksbury Borough Council

Council Tax band: G

Tenure: Freehold

Guide Price: £900,000



KITCHEN AND DINING

The bespoke kitchen at The Thatched Cottage is a seamless blend of style and practicality. Thoughtfully designed with underfloor heating and quality finishes, it opens into a spacious breakfast area ideal for everyday living. Adjacent, the formal dining room offers an elegant setting for entertaining, with views over the gardens that enhance every gathering. Together, these spaces create a warm and welcoming hub at the centre of the home.









LIVING AND ENTERTAINING

The Thatched Cottage offers two beautifully appointed reception rooms, each with its own distinct character. The spacious living room, with its generous proportions and feature fireplace, is perfect for hosting guests or enjoying quiet evenings by the fire. The adjoining family room provides a more intimate setting, ideal for relaxed everyday living or as a cosy retreat. Both rooms enjoy views over the gardens, enhancing the sense of light and connection to the outdoors.







BEDROOMS AND BATHROOMS

The upper floor of The Thatched Cottage is thoughtfully arranged to offer comfort and character in equal measure. The principal bedroom is a standout feature, with generous proportions, garden views, and its own en suite bathroom. A dedicated dressing room with bespoke fitted wardrobes adds a touch of luxury and practicality. Three further double bedrooms, each with charming period details and ample space, provide flexibility for family, guests, or home working. The stylish family bathroom is beautifully finished, combining traditional aesthetics with modern fittings to create a serene and functional space.

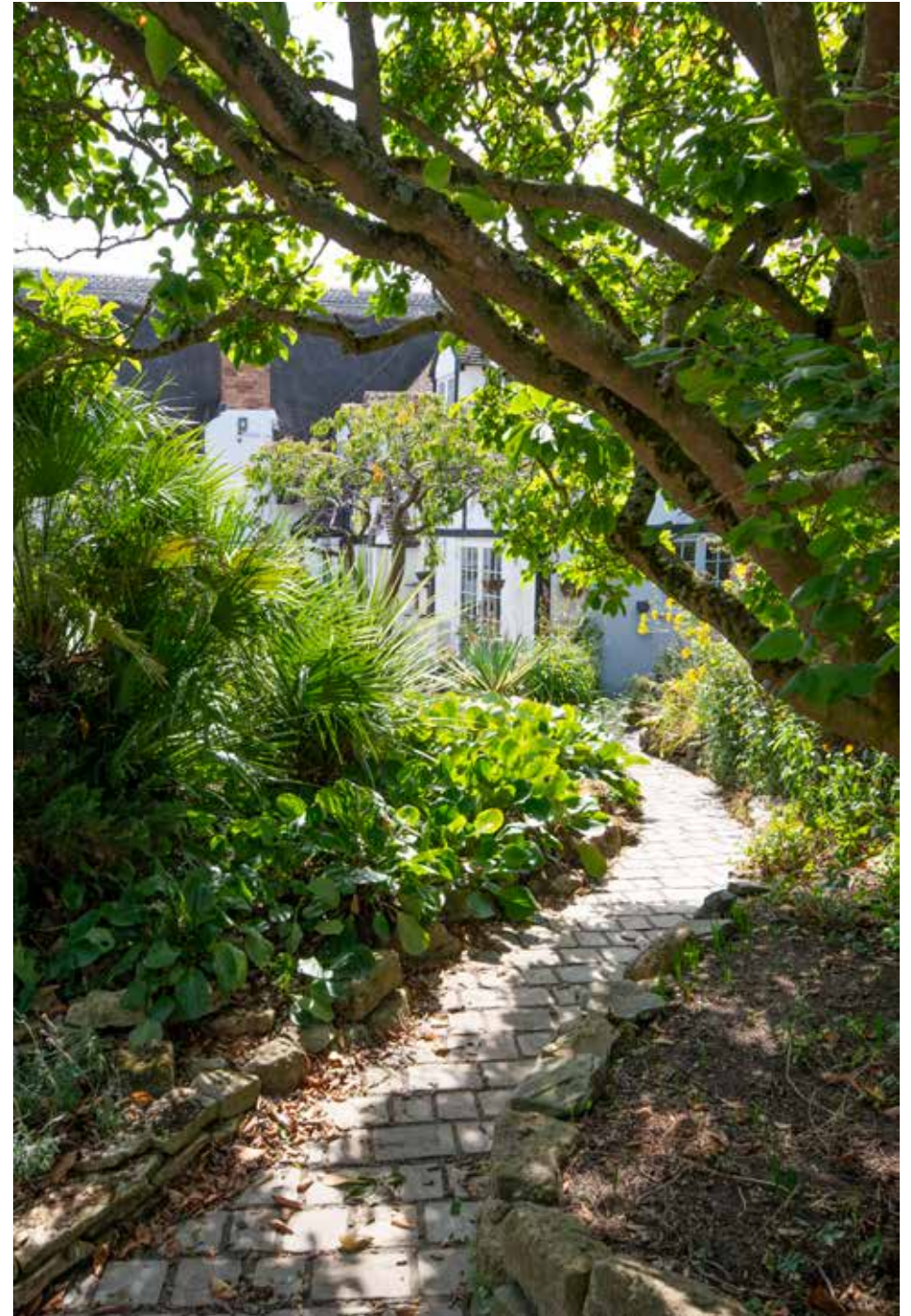






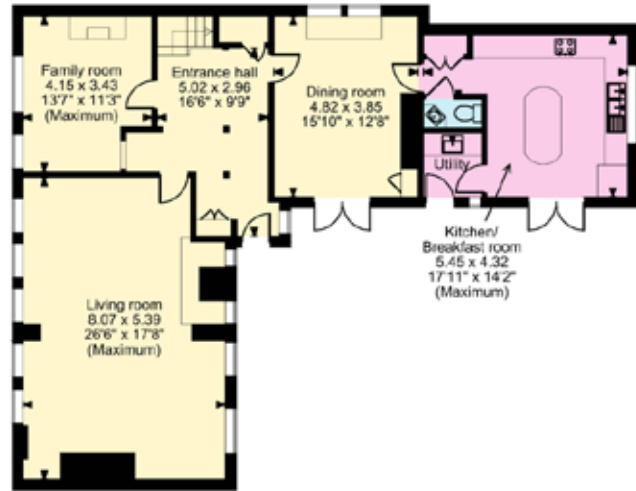
ANNEXE AND OUTDOORS

Beyond the main house, the grounds of The Thatched Cottage offer exceptional lifestyle features. The newly built annexe provides a versatile space, currently arranged as a luxurious media room with a dedicated office above, ideal for guests, remote working, or creative pursuits. Outside, the landscaped gardens are a private sanctuary, with mature borders, manicured lawns, and a charming patio perfect for al fresco dining. A heated outdoor swimming pool, complete with a changing room, adds a touch of resort-style living, making the property as suited to entertaining as it is to quiet retreat.





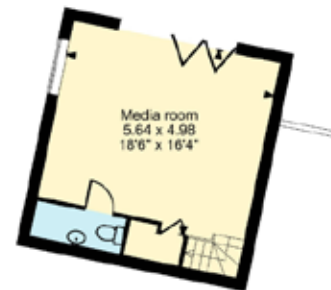
Beckford Road, Alderton, Tewkesbury
APPROXIMATE GROSS INTERNAL FLOOR AREA
Main House = 231sq.m (2,481sq.ft)
Annexe & Pool House = 73sq.m (789sq.ft)
Garden Store = 12sq.m (132sq.ft)
Total = 316sq.m (3,402sq.ft)



GROUND FLOOR



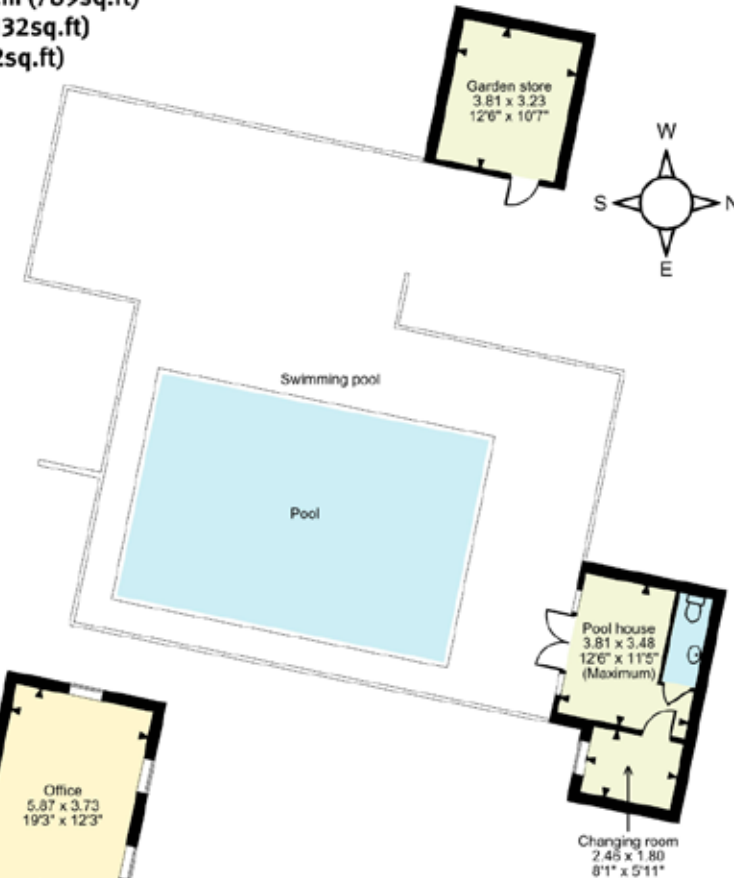
FIRST FLOOR



ANNEXE GROUND FLOOR



ANNEXE FIRST FLOOR



(Including Annexe, Pool House and Garden Store)
 Approximate Gross Internal Area = 316 sq m / 3402 sq ft

This plan is for layout guidance only. Not drawn to scale unless stated. Windows and door openings are approximate. Whilst every care is taken in the preparation of this plan, please check all dimensions, shapes and compass bearings before making any decisions reliant upon them. (ID767266)



Tom Banwell

01242 246951

tom.banwell@knightfrank.com

Knight Frank Cheltenham

123 Promenade

Cheltenham, GL50 1NW

knightfrank.co.uk

Your partners in property

1. Particulars: These particulars are not an offer or contract, nor part of one. You should not rely on statements given by Knight Frank in the particulars, by word of mouth or in writing ("information") as being factually accurate about the property, its condition or its value. Neither Knight Frank nor any joint agent has any authority to make any representations about the property, and accordingly any information given is entirely without responsibility on the part of Knight Frank. 2. Material Information: Please note that the material information is provided to Knight Frank by third parties and is provided here as a guide only. While Knight Frank has taken steps to verify this information, we advise you to confirm the details of any such material information prior to any offer being submitted. If we are informed of changes to this information by the seller or another third party, we will use reasonable endeavours to update this as soon as practical. 3. Photos, Videos etc: The photographs, property videos and virtual viewings etc. show only certain parts of the property as they appeared at the time they were taken. Areas, measurements and distances given are approximate only. 4. Regulations etc: Any reference to alterations to, or use of, any part of the property does not mean that any necessary planning, building regulations or other consent has been obtained. A buyer must find out by inspection or in other ways that these matters have been properly dealt with and that all information is correct. 5. Fixtures and fittings: A list of the fitted carpets, curtains, light fittings and other items fixed to the property which are included in the sale (or may be available by separate negotiation) will be provided by the Seller's Solicitors. 6. VAT: The VAT position relating to the property may change without notice. 7. To find out how we process Personal Data, please refer to our Group Privacy Statement and other notices at <https://www.knightfrank.com/legals/privacy-statement>.

Particulars dated September 2025 Photographs and videos dated August 2025. All information is correct at the time of going to print. Knight Frank is the trading name of Knight Frank LLP. Knight Frank LLP is a limited liability partnership registered in England and Wales with registered number OC305934. Our registered office is at 55 Baker Street, London W1U 8AN. We use the term "partner" to refer to a member of Knight Frank LLP, or an employee or consultant. A list of members names of Knight Frank LLP may be inspected at our registered office. If you do not want us to contact you further about our services then please contact us by either calling 020 3544 0692, email to marketing.help@knightfrank.com or post to our UK Residential Marketing Manager at our registered office (above) providing your name and address.

