



Flat 10, 12-13 Brunswick Terrace, Hove
£625,000

**MANSELL
McTAGGART**
Trusted since 1947

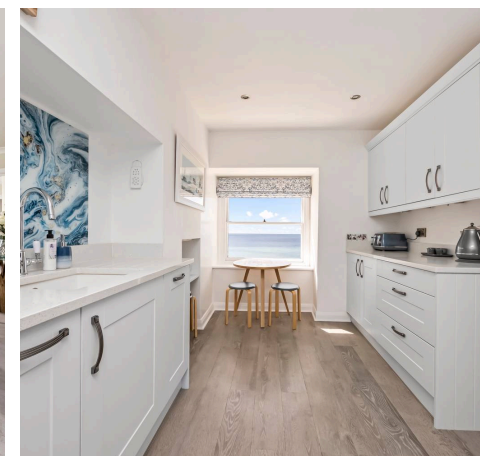
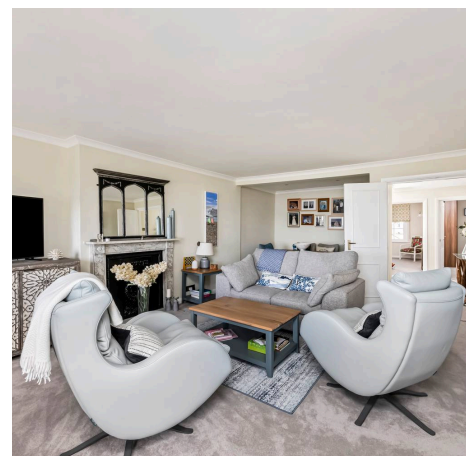
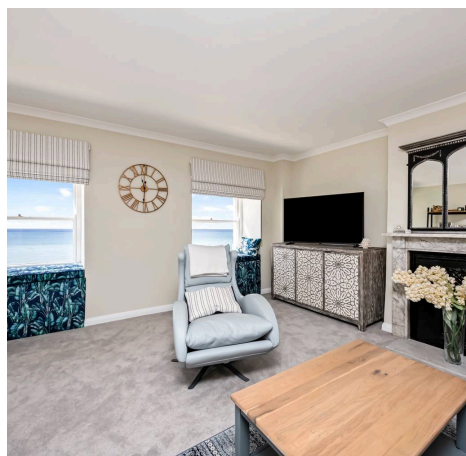
Flat 10

12-13 Brunswick Terrace, Hove

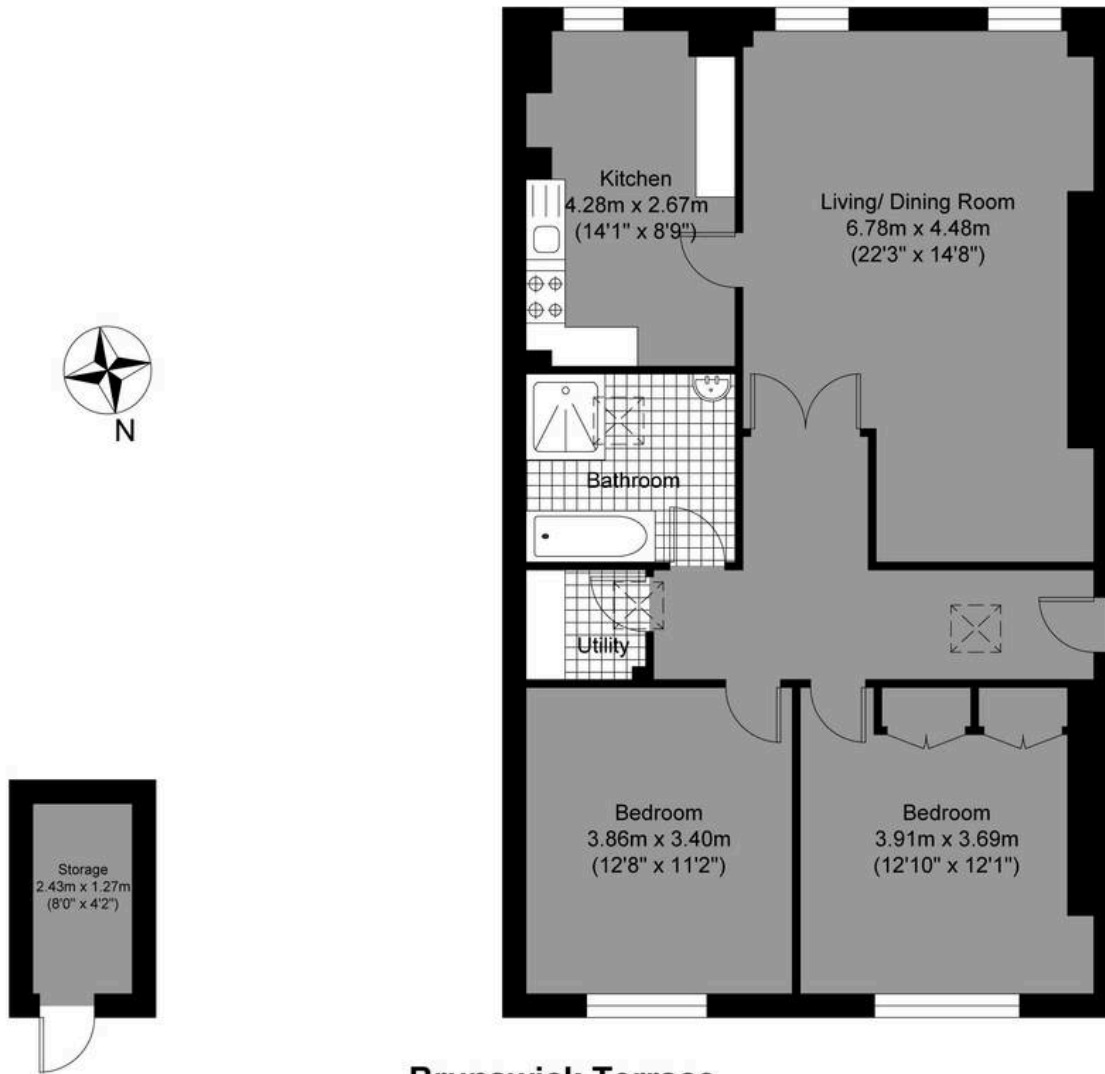
Council Tax band: D

Tenure: Leasehold

- Beautifully Presented Two Bedroom Apartment With Passenger Lift
- Prestigious Grade I Listed Regency Building
- Huge Living Room With Feature Fireplace, Space For Dining/Office Space & Window Seats With Sea Views
- Sold With No Onwards Chain & Share Of Freehold
- Opposite Hove Seafront, Hove Lawn And Walking Distance To Everything Brighton & Hove Has To Offer
- Two Double Bedrooms With Both Built In Wardrobes & Roof Top Views
- Large Entrance Hall, Separate Utility Room & Skylights
- Stunning Bathroom Which Benefits From A Bath & Walk In Shower
- Exclusive To Mansell McTaggart
- Separate Kitchen With Ample Storage Space, Integrated Appliances & Sea Views



Approximate Gross Internal Area= 92.19 sq m / 992.32 sq ft



**MANSELL
McTAGGART**
— Trusted since 1947 —

Brunswick Terrace

Basement
Approximate Floor Area
33.26 sq ft (3.09 sq m)

Third Floor
Approximate Floor Area
959.06 sq ft (89.10 sq m)

Illustration for identification purposes only, measurements are approximate, not to scale.

© Mansell McTaggart



Mansell McTaggart Hove

170 Church Road, Hove - BN3 2DJ

01273 044929

hove@mansellmctaggart.co.uk

www.mansellmctaggart.co.uk/branch/hove/

