



## Crewdson Road, SW9

£499,950

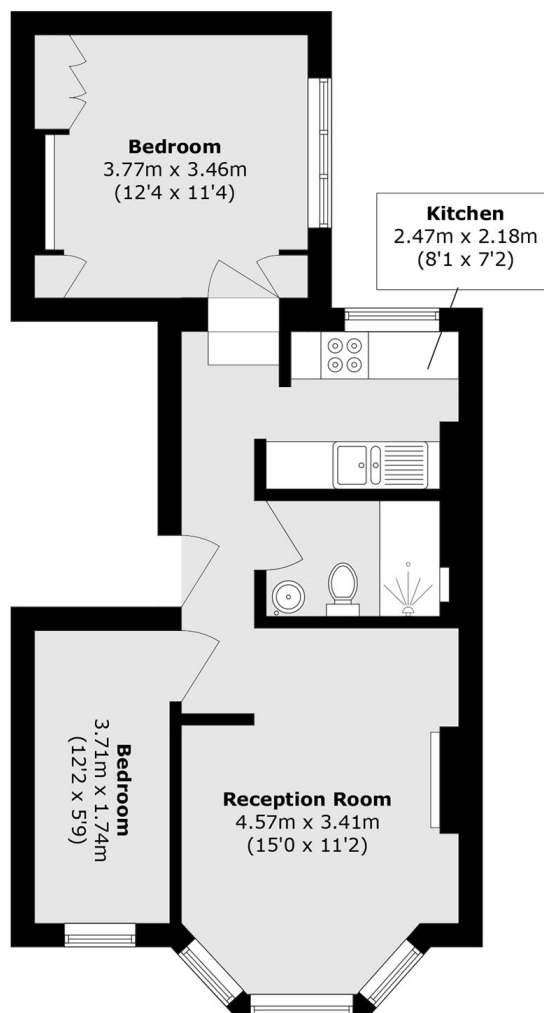
A wonderful two bedroom first floor Victorian conversion in fabulous condition throughout. This beautiful home has a lovely bay-fronted reception room with a bay window, providing space for both living and dining areas. The separate kitchen is stylish in design and has plenty of worktop space, perfect for those who love to cook and entertain. A modern shower room serves the two bedrooms. Furthermore, there is a good amount of storage and a share of freehold.

Crewdson Road is a fantastic location, just a short walk from Oval cricket ground and Oval Station (Northern Line). There are plenty of bus routes close by and Vauxhall Station (Victoria Line and Overground Rail) is just a short walk away. There are several great local pubs, restaurants and cafes close by, as are the green spaces of Kennington Park.

### Features

- Two Bedrooms
- Share of Freehold
- Quiet/Convenient Location
- First Floor
- Separate Kitchen
- Excellent Condition

# Crewdson Road, LONDON, SW9



Total area (approx.): 48.2 sq. m (518.8 sq. ft)