



JON KEYTE

exp[®] UK

@ jon.keyte@exp.uk.com

🌐 jonkeyte.exp.uk.com

☎ 07445 265 314

Broadley Drive, Torquay, TQ2 6UE

Guide Price £325,000

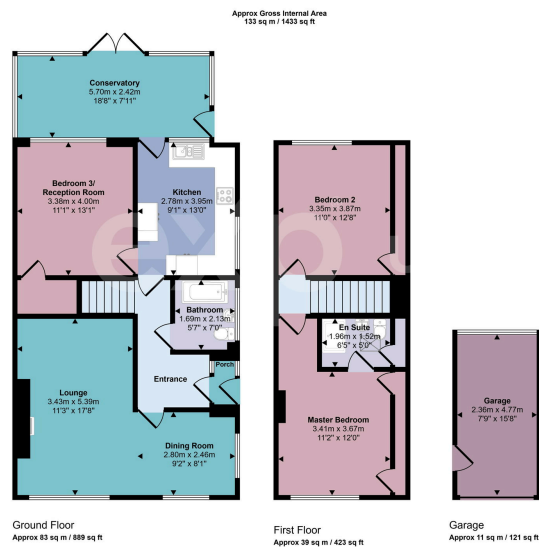
3  1  2 



- Please Quote JK1243
- Situated in Popular Livermead
- Three Bedrooms
- In Need of Some Modernising
- Garage & Driveway
- Semi-Detached Bungalow
- Stunning Far Reaching Sea Views to the Front
- Open Plan Lounge/Dining Room
- Sizeable Conservatory
- Mature Rear Garden with Fruit Trees



Please Quote JK1243 - Situated in the popular Livermead area, this three-bedroom semi-detached chalet bungalow offers excellent potential and benefits from parking and a garage. The property is in need of some modernisation but provides well-proportioned and versatile accommodation. To the front is an open plan lounge/dining room featuring large picture windows that allow plenty of natural light. The kitchen requires updating and leads through to a generous conservatory overlooking the rear garden. There is a ground floor bedroom three, which could also be used as a second reception room, along with a downstairs bathroom. Upstairs are two double bedrooms, with the master enjoying the added benefit of an en-suite shower room. Outside, the enclosed rear garden is a particular feature, boasting six fruit trees comprising two pear, two plum and two apple trees. An ideal opportunity to create a lovely home in a sought-after location.



This floorplan is only for illustrative purposes and is not to scale. Measurements of rooms, doors, windows, and any items are approximate and no responsibility is taken for any error, omission or mis-statement. Icons of items such as bathroom suites are representations only and may not look like the real items. Made with Made Simple 360.

