



## MURRAY STREET, NW1

£500,000

Large Apartment  
Lift Access  
Lease of 114 Years  
Two Separate Terraces  
Top Floor  
Chain Free

@marshandparsons  
marshandparsons.co.uk

MARSH &  
PARSONS



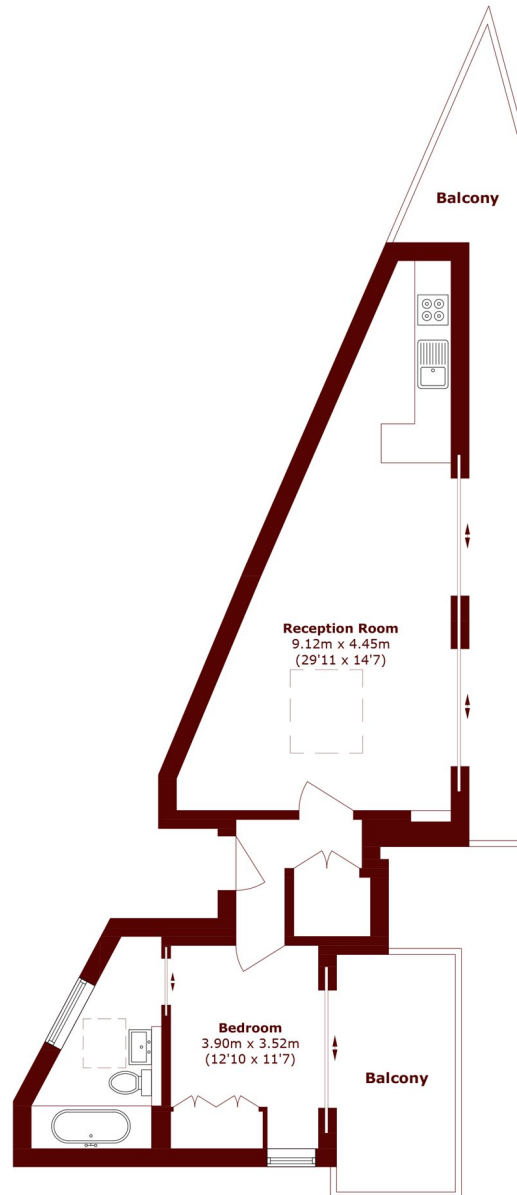
# ABOUT THE PROPERTY

A spacious and contemporary one-bedroom apartment located in a low-rise modern block in Camden. The property features a generous living area with a fitted kitchen, a bedroom with a private terrace, an additional terrace accessed from the living room and no onward chain.

Murray Street is located close to Camden Town and within easy reach of King's Cross. Excellent transport links, including both overground and underground stations, are all within walking distance, as are a range of local amenities such as coffee shops and supermarkets.



# STEP INSIDE MURRAY STREET



Total area (approx.): 51.6 sq. m (555.4 sq. ft)  
Balcony area (approx.): 20.1 sq. m (216.3 sq. ft)

**Camden**  
020 7244 2200

Energy Rating: C We aim to make our particulars both accurate and reliable. However, they are not guaranteed; nor do they form part of an offer or contract. If you require clarification on any points then please contact us, especially if you're traveling some distance to view. Please note that appliances and heating systems have not been tested and therefore no warranties can be given as to their good working order

**MARSH &  
PARSONS**