



## **The Panoramic, Willis Street, Poplar, E14 6GF**

### **£405 Per Week**

A 1 bedroom apartment for rent on the 10th floor of this sought after development 'Panoramic Tower' E14.

The apartment is spacious throughout comprising of an open plan living room with modern fitted kitchen, access to terrace with great views of Canary Wharf, fitted bedroom, modern bathroom suite and under floor heating.

Panoramic Tower is located a few minutes walk from Langdon Park DLR station.

Concierge, residents roof garden and residents gym.

Comes furnished. AVAILABLE FROM NOW.

Marketing of On-Site Amenities and Agent Indemnity.

- Canary Wharf E14
- Terrace
- Underfloor Heating
- Available From Now
- 1 Bedroom Apartment
- Gym
- Great Views
- Close To DLR Station
- Concierge
- 10th Floor

**The Panoramic, Willis Street, Poplar, E14 6GF**



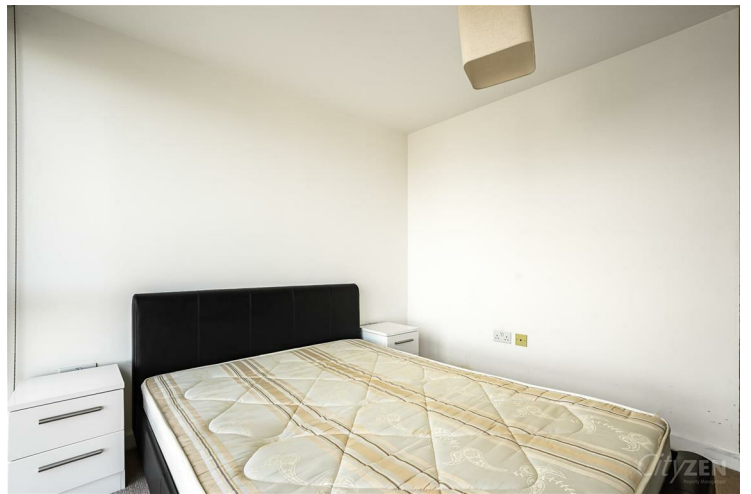
**BATHROOM**



**BEDROOM**



**BATHROOM**



**BEDROOM**



**BEDROOM**



**BEDROOM**

# The Panoramic, Willis Street, Poplar, E14 6GF



VIEW FROM BEDROOM



BALCONY



BALCONY



VIEW



BALCONY



VIEW

# The Panoramic, Willis Street, Poplar, E14 6GF



HALLWAY



RECEPTION



RECEPTION



RECEPTION



KITCHEN



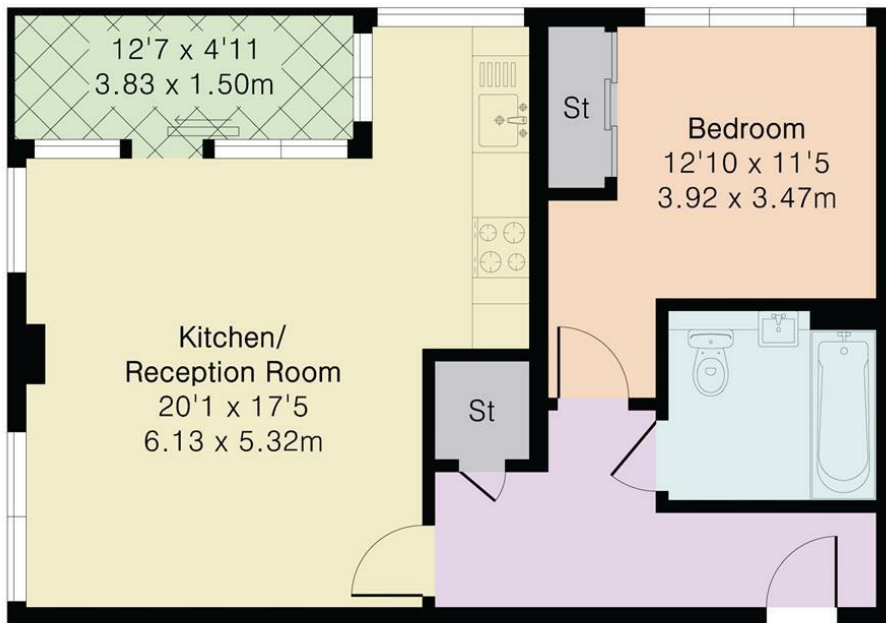
RECEPTION

## The Panoramic, Willis Street, Poplar, E14 6GF



PANORAMIC TOWER

# Approximate Gross Internal Area 538 sq ft - 50 sq m



## Tenth Floor



Floor plan produced in accordance with RICS Property Measurement 2nd Edition. Although Pink Plan Ltd ensures the highest level of accuracy, measurements of doors, windows and rooms are approximate and no responsibility is taken for error, omission or misstatement. These plans are for representation purposes only and no guarantee is given on the total square footage of the property within this plan. The figure icon is for initial guidance only and should not be relied on as a basis of valuation.



### Energy Efficiency Rating

	Current	Potential
Very energy efficient - lower running costs		
(92 plus) <b>A</b>		
(81-91) <b>B</b>	<b>82</b>	<b>82</b>
(69-80) <b>C</b>		
(55-68) <b>D</b>		
(39-54) <b>E</b>		
(21-38) <b>F</b>		
(1-20) <b>G</b>		
Not energy efficient - higher running costs		

### England & Wales

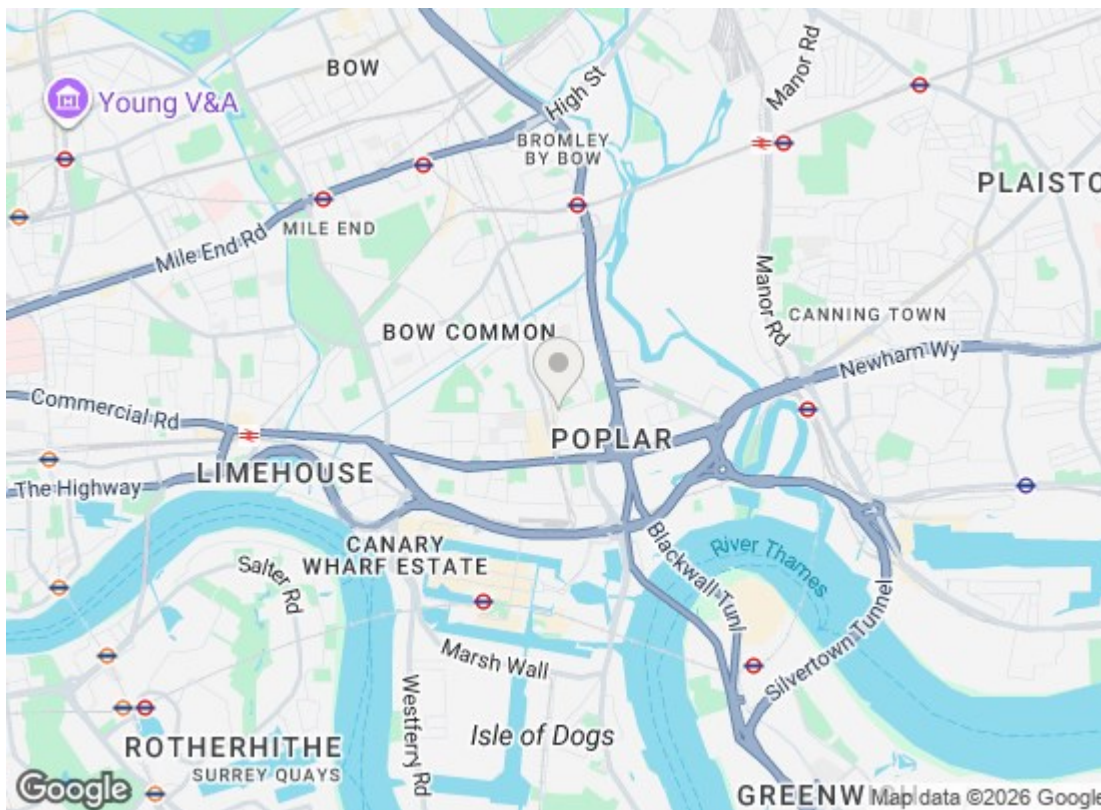
EU Directive 2002/91/EC

### Environmental Impact (CO<sub>2</sub>) Rating

	Current	Potential
Very environmentally friendly - lower CO <sub>2</sub> emissions		
(92 plus) <b>A</b>		
(81-91) <b>B</b>		
(69-80) <b>C</b>		
(55-68) <b>D</b>		
(39-54) <b>E</b>		
(21-38) <b>F</b>		
(1-20) <b>G</b>		
Not environmentally friendly - higher CO <sub>2</sub> emissions		

### England & Wales

EU Directive 2002/91/EC



We have prepared these property particulars as a general guide to a broad description of the property. They are not intended to constitute part of an offer or contract. We have not carried out a structural survey and the services, appliances and specific fittings have not been tested. All photographs, measurements, floorplans and distances referred to are given as a guide only and should not be relied upon for the purchase of carpets or any other fixtures or fittings. Lease details, service charges and ground rent (where applicable) and council tax are given as a guide only and should be checked and confirmed by your Solicitor prior to exchange of contracts.