

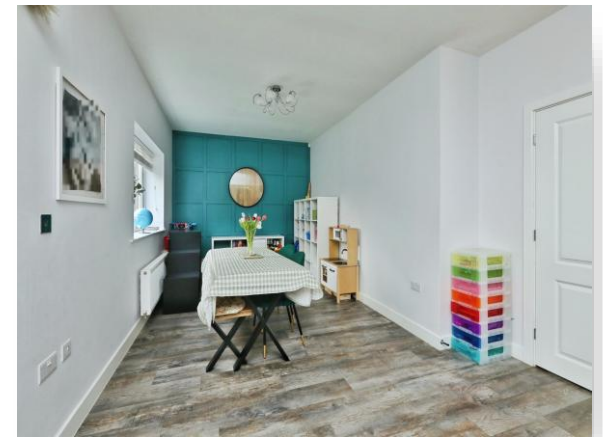


**Bramling Cross Mews, Worksop S81 7TF**

**welcome to**

**Bramling Cross Mews, Worksop**

A spacious five bedroom family home in the popular area of Gateford, offering versatile living accommodation including an open plan kitchen diner with garden room, utility room and en-suite bedrooms. Externally benefitting from a generous driveway, double garage and an enclosed rear garden.



### **Bramling Cross Mews, Gateford Entrance Hall**

A welcoming entrance hall accessed via the front facing door, featuring stairs rising to the first floor and providing access to the ground floor accommodation.

### **Lounge**

A comfortable and stylish living space with a front facing double glazed window and a modern media wall incorporating an inset electric fire, creating a focal point to the room.

### **Kitchen Diner**

An impressive open plan kitchen diner, fitted with a comprehensive range of wall and base units with complementary work surfaces and an inset sink with drainer. Integrated appliances include a dishwasher, double oven, gas hob with extractor over. Further features include ceiling spotlights, a central heating radiator, two rear facing double glazed windows and decorative panelling to one wall. The kitchen diner flows seamlessly into the garden room, making it ideal for modern family living and entertaining.

### **Garden Room**

A bright and versatile space with a side facing double glazed window, rear floor to ceiling glazing and side facing bi-fold doors opening directly onto the garden.

### **Utility Room**

A practical utility space with a side facing entrance door, providing access to the downstairs cloakroom and the integral garage.

### **Cloakroom**

Fitted with a low level WC and wash hand basin.

### **Landing**

A spacious first floor landing with access to the airing cupboard and all first floor rooms.

### **Bedroom One**

A generous double bedroom featuring fitted

wardrobes, decorative wall panelling, a central heating radiator and a front facing double glazed window, with access to the en-suite.

### **En-Suite**

Fitted with a three piece suite comprising a shower cubicle, WC and wash hand basin.

### **Bedroom Two**

A further double bedroom with a front facing double glazed bay window, central heating radiator and access to a private en-suite.

### **En-Suite**

Comprising a three piece suite with shower cubicle, WC and wash hand basin, complemented by part tiled walls and a tiled floor.

### **Bedroom Three**

Rear facing double glazed window and central heating radiator.

### **Bedroom Four**

Rear facing double glazed window and central heating radiator.

### **Bedroom Five**

Rear facing double glazed window and central heating radiator.

### **Family Bathroom**

Fitted with a four piece suite comprising a bath, shower cubicle, WC and wash hand basin.

### **Exterior**

To the front of the property is a lawned area and a substantial driveway leading to a double garage, providing off street parking for multiple vehicles.

To the rear is a fenced and enclosed garden, mainly laid to lawn with a spacious paved seating area, ideal for outdoor dining and entertaining.



**view this property online** [williamhbrown.co.uk/Property/WKS115977](http://williamhbrown.co.uk/Property/WKS115977)



welcome to

## Bramling Cross Mews, Worksop

- Five bedroom detached family home
- Popular residential location in Gateford
- Spacious and versatile accommodation throughout
- Open plan kitchen diner with garden room
- Utility room and downstairs WC

Tenure: Freehold EPC Rating: B

Council Tax Band: F

# £470,000



Please note the marker reflects the postcode not the actual property

**view this property online** [williamhbrown.co.uk/Property/WKS115977](http://williamhbrown.co.uk/Property/WKS115977)



Property Ref:  
WKS115977 - 0004

1. MONEY LAUNDERING REGULATIONS Intending purchasers will be asked to produce identification documentation at a later stage and we would ask for your co-operation in order that there is no delay in agreeing the sale. 2. These particulars do not constitute part or all of an offer or contract. 3. The measurements indicated are supplied for guidance only and as such must be considered incorrect. Potential buyers are advised to recheck measurements before committing to any expense. 4. We have not tested any apparatus, equipment, fixtures or services and it is in the buyers interest to check the working condition of any appliances. 5. Where an EPC, or a Home Report (Scotland only) is held for this property, it is available for inspection at the branch by appointment. If you require a printed version of a Home Report, you will need to pay a reasonable production charge reflecting printing and other costs. 6. We are not able to offer an opinion either written or verbal on the content of these reports and this must be obtained from your legal representative. 7. Whilst we take care in preparing these reports, a buyer should ensure that his/her legal representative confirms as soon as possible all matters relating to title including the extent and boundaries of the property and other important matters before exchange of contracts.

William H Brown is a trading name of Sequence (UK) Limited which is registered in England and Wales under company number 4268443, Registered Office is Cumbria House, 16-20 Hockliffe Street, Leighton Buzzard, Bedfordshire, LU7 1GN. VAT Registration Number is 500 2481 05.



william h brown



**01909 500505**



[Worksop@williamhbrown.co.uk](mailto:Worksop@williamhbrown.co.uk)



80 Bridge Street, WORKSOP, Nottinghamshire,  
S80 1JA



[williamhbrown.co.uk](http://williamhbrown.co.uk)