



St. Marys Square , London, W2

£3,950 Per week

**** THREE DOUBLE BEDROOMS AND SEPTEMBER MOVE IN **
SHARERS WELCOME **** Spacious three double bedroom first floor flat situated in a fantastic location close to Paddington station and the sought after area of Little Venice. Within an attractive purpose built building the accommodation consists of an entrance hallway, eat in kitchen, living room with door opening on to private balcony, three double bedrooms and a shower room with separate WC. Outside to the rear there are private communal gardens and the development benefits from recently having a secure gated fob entrance system installed.

Council tax band: D
Minimum term: 12 months
Deposit: 5 weeks

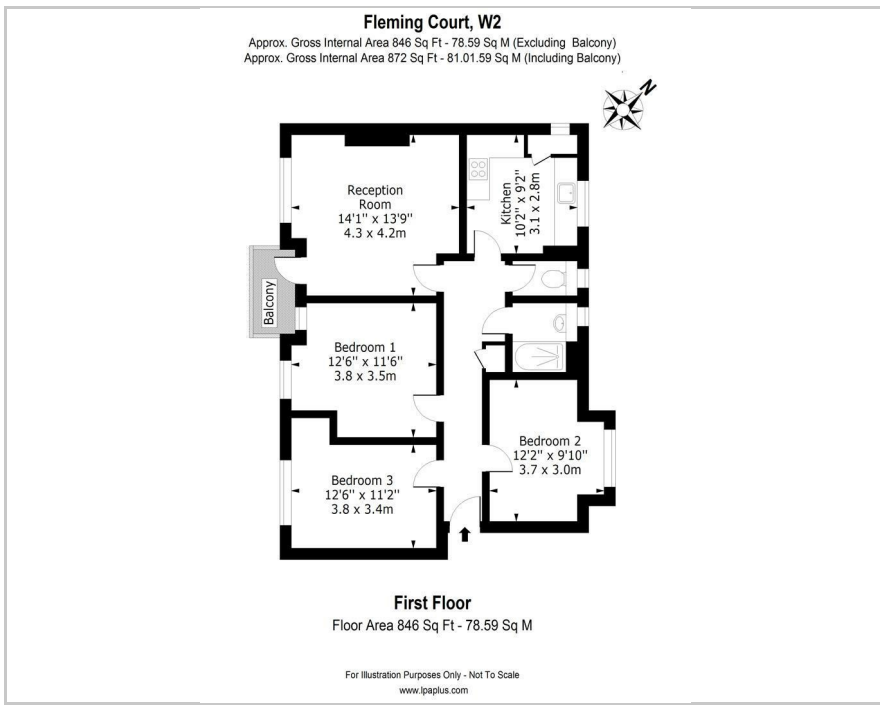
- Three Double Bedrooms
- First Floor
- Bright and Spacious
- Ideally Located Close To Paddington and Little Venice
- Communal Gardens To Rear
- Gated Development
- Part Furnished
- Available Early September

Viewing

Please contact our Intra Capital Estates Office on 0207 183 6676 if you wish to arrange a viewing appointment for this property or require further information.



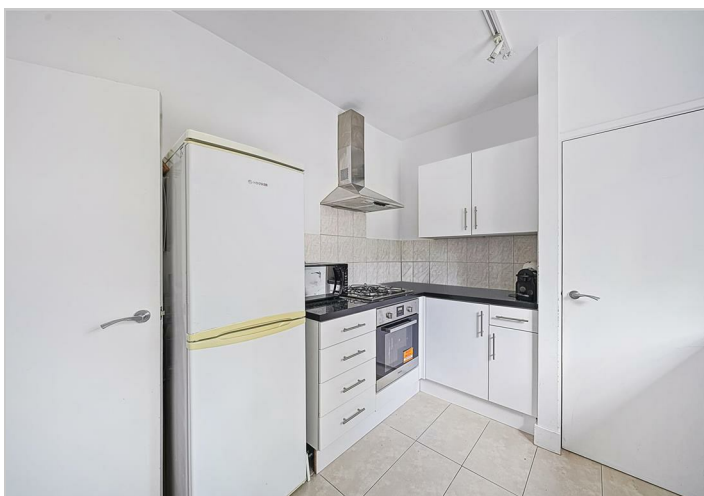
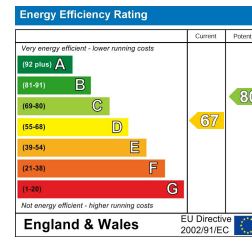
Floor Plan



Area Map



Energy Efficiency Graph



These particulars, whilst believed to be accurate are set out as a general outline only for guidance and do not constitute any part of an offer or contract. Intending purchasers should not rely on them as statements of fact, but must satisfy themselves by inspection or otherwise as to their accuracy. No person in this firm's employment has the authority to make or give any representation or warranty in respect of the property.

INTRA-CAPITAL ESTATES

Paddington Works, 8 Hermitage Street, London, W2 1BE

Tel: 0207 183 6676 Email: info@intra-capital.co.uk

www.intra-capital.co.uk

Intra-Capital Estates is a trading name of Intra Capital Estates Limited, a private limited company registered in England and Wales.
 Registered number: 11840427. VAT registration number: 31763281. Registered office Paddington Works, 8 Hermitage Street, London, W2 1BE.

MODERN APPROACH TRADITIONAL VALUES

