



HUNTERS®  
HERE TO GET *you* THERE

**HUNTERS®**  
HERE TO GET *you* THERE

5 3 3 D

# Belsize Road, South Hampstead, London, NW6

## Asking Price £2,250,000



A charming end of terrace four-bedroom period home, spanning circa 2,400 square foot of internal living space and a tranquil rear garden. Located on a popular residential street in South Hampstead

Set over three floors, the property retains a wealth of period character, including ceiling roses, fireplaces, and high ceilings, whilst offering excellent scope & potential. Accommodation comprises a large double reception room, a well-appointed kitchen with ample storage, four generous bedrooms, three bathrooms, and an additional cloakrooms. The home further benefits from a private garden. This would make an ideal family home.

Offering fantastic transport links including South Hampstead Station (0.1 miles) & Swiss Cottage Station (0.3) miles. Further, there a numerous amenities located along Finchley Road.



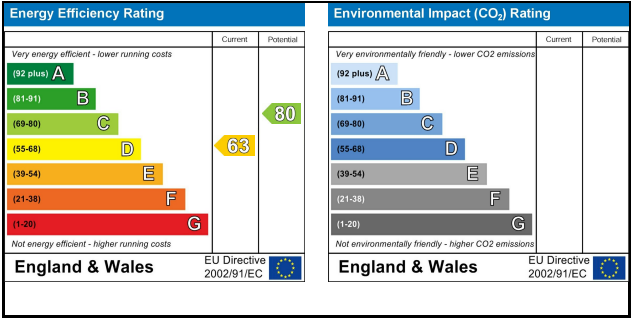
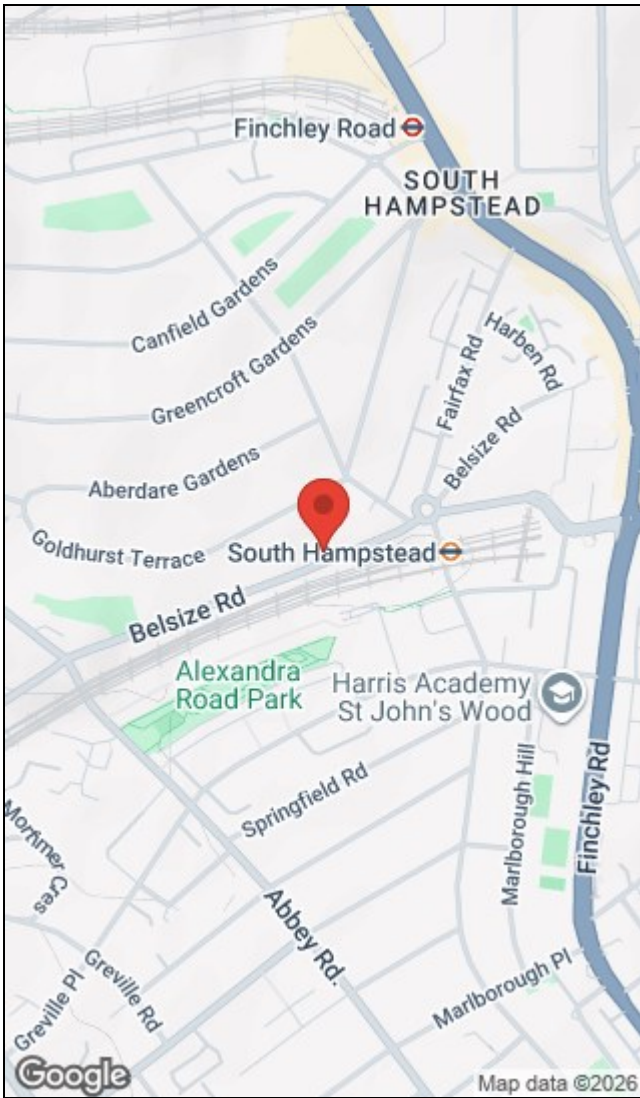
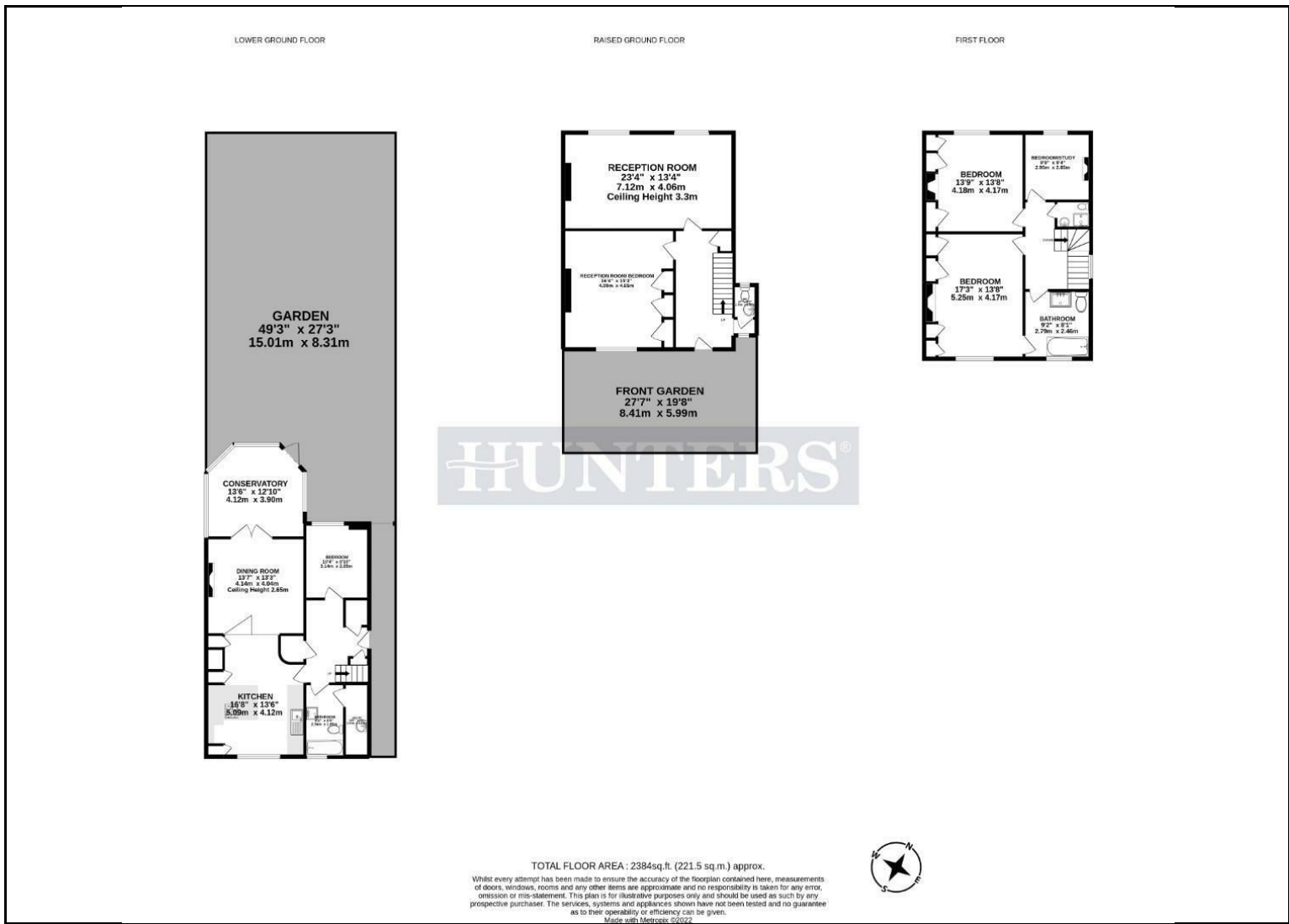
## KEY FEATURES

- Victorian End of Terrace Family Home
- Four bedrooms, three bathrooms and three reception rooms
- Over 2,384 sq.ft of internal living space
- Period features throughout including a 10ft ceiling height
  - Recently modernised kitchen
  - Private 50ft rear garden
- Close proximity to South Hampstead Overground station
- Conservation area









223 West End Lane, West Hampstead, London, NW6 1XJ | 0207 431 4777  
westhampsteadsales@hunters.com | www.hunters.com



This Hunters business is independently owned and operated by Starside Estates Limited | Registered Address: 29 Oakwood Park Road, London, N14 6QB | Registered Number: 6741529 England and Wales | VAT No: 943 9575 77 with the written consent of Hunters Franchising Limited.