

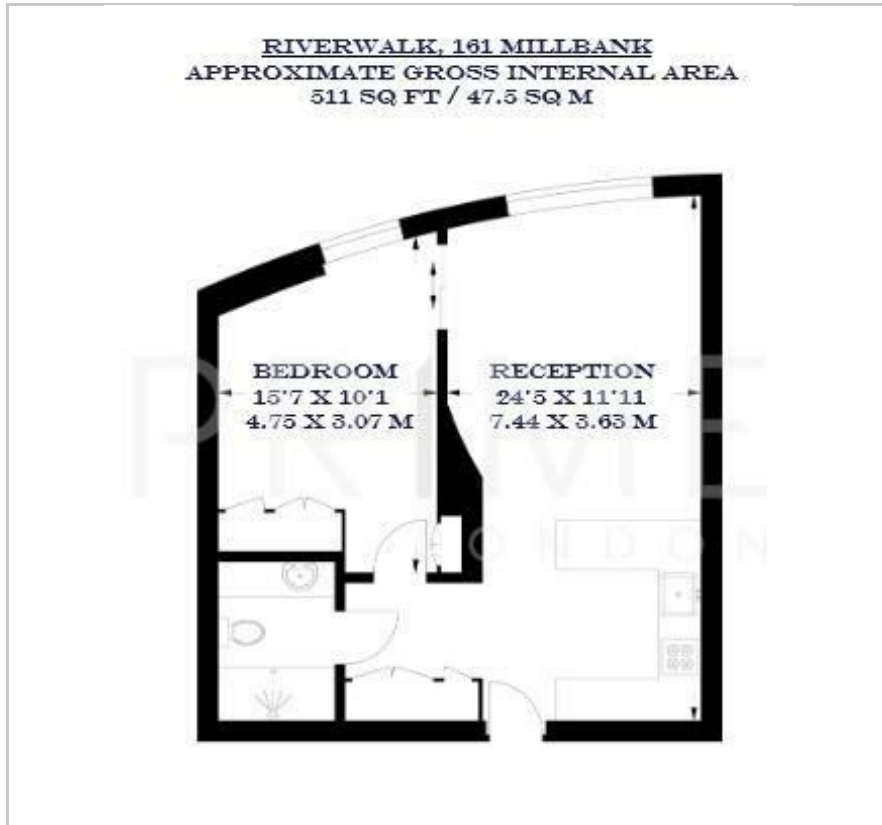
Riverwalk

161 Millbank, Westminster, SW1P 4FA

Offers In Excess Of £700,000



Floor Plan



Area Map



Energy Efficiency Graph



Viewing

By appointment. Contact us on 0207 052 1075 if you wish to arrange a viewing appointment for this property, or require further information.

- Exceptional one bedroom ▪ 511 sq ft (47.5 sqm) apartment
- Open plan kitchen and ▪ Secure Parking reception area
- Residents' gym and yoga ▪ 24 hour concierge studio

This exceptional one bedroom apartment of 511 sq ft (47.5 sqm), within the luxurious development Riverwalk, is available for chain free sale through Prime London.

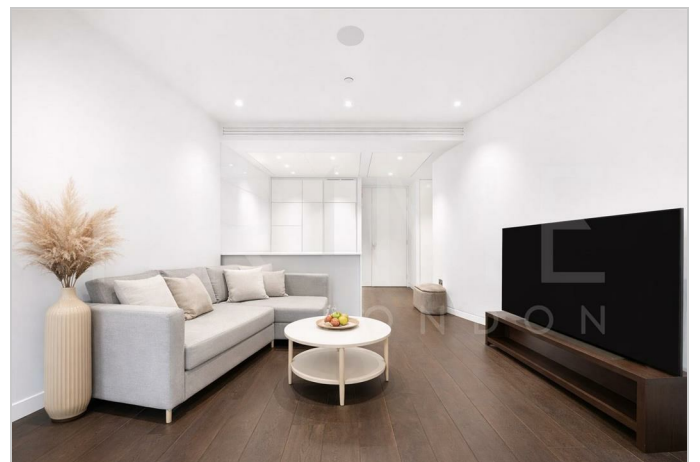
The property also comes with a secure parking space.

Finished to an excellent standard throughout, the apartment consists of an open plan reception room and state of the art Boffi kitchen with integrated Miele appliances, a double bedroom complete with built in wardrobes and a luxuriously appointed shower room.

The apartment is also fitted with Crestron lighting and home automation system, comfort cooling and underfloor heating.

Residents of Riverwalk benefit from excellent facilities, including a gymnasium, a yoga studio overlooking the river, and an excellent 24 hour concierge service.

Riverwalk is situated on the banks of the River Thames in Westminister, a few minutes' walk from Pimlico underground station which provides Victoria line services into Central London.



These particulars, whilst believed to be accurate are set out as a general outline only for guidance and do not constitute any part of an offer or contract. Intending purchasers should not rely on them as statements of representation of fact, but must satisfy themselves by inspection or otherwise as to their accuracy. No person in this firm's employment has the authority to make or give any representation or warranty in respect of the property.