



Rectory Lane, KT6

£5,500 Per calendar month

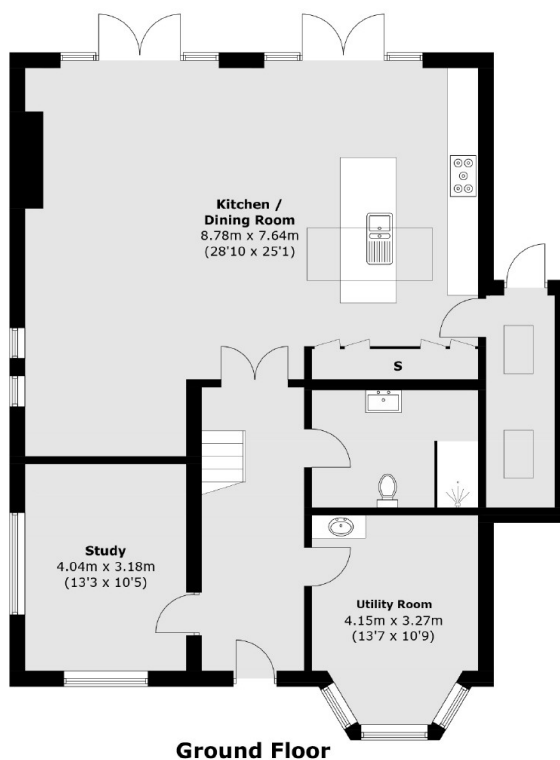
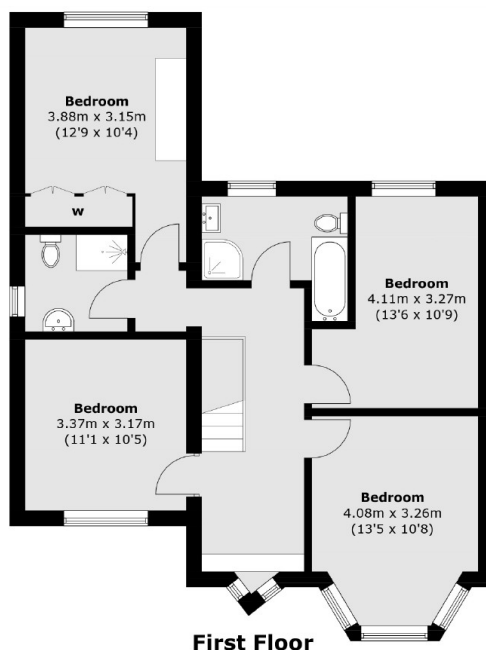
With a spacious kitchen/diner, four bedrooms, three bathrooms and a large private rear garden, this detached property offers the perfect amount of space for a family.

Rectory Lane is in the family-friendly area of Long Ditton, and is just over a mile away from both Surbiton and Thames Ditton train stations and high streets.

Features

- Detached
- Spacious Kitchen/Diner
- Four Bedrooms
- Three Bathrooms
- Large Private Garden
- Great Location

Rectory Lane, Surbiton, KT6



Total area (approx.): 187.3 sq. m (2,016.0 sq. ft)