



Guide Price
£260,000

Freehold

2x  1x  1x 

**Middleton Close,
Rainham, Gillingham,
Kent, ME8**

OVER 60?

Secure this property
for up to **59% less!**

Wards
Helping you move forwards



Main features

- A smartly presented property that would be perfect as a first home
- Spacious 16ft lounge and separate kitchen/breakfast room
- Low maintenance rear garden
- Useful garage en-bloc
- Close to shops and motorway access

Accommodation

GROUND FLOOR

Porch

Lounge : 16'5 x 13'4 (5.01m x 4.07m)

Kitchen/Breakfast Room: 13'3 x 10'6 (4.04m x 3.20m)

FIRST FLOOR

Landing

Bedroom 1 : 12'2 x 9'10 (3.71m x 3.00m)

Bedroom 2 : 12'6 x 7'8 (3.81m x 2.34m)

Shower Room

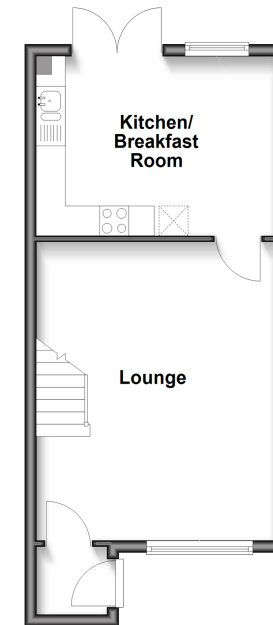
OUTSIDE

Front Garden

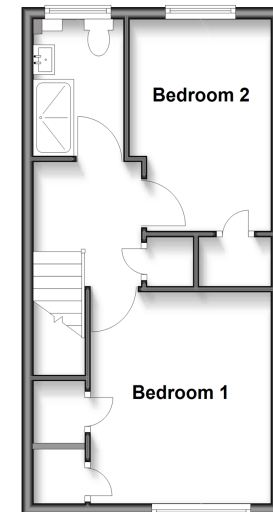
Rear Garden

Garage En-Bloc

Ground Floor
Approx. 34.9 sq. metres (375.4 sq. feet)



First Floor
Approx. 33.4 sq. metres (359.2 sq. feet)



Call Rainham - 01634 373531 ■ wardsof Kent.co.uk

- Legal advice should be taken to verify fixtures/fittings, planning, alterations and/or lease details
- Appliances & services are untested, dimensions are approximate and floor plans are not to scale
- Through a Homewise Home For Life Plan people aged 60+ can secure this property for up to 50% less, by purchasing a Lifetime Lease.



11338750/20251127/DW/DW