

Heron Way, Horsham

Guide Price £625,000

3 1 1



An impressive Detached Family Homes close to Popular Schools, boasting a Large Rear Garden, excellent Potential to Extend & Improve (stpp), Extended 16ft Kitchen Breakfast Room and No Onward Chain.

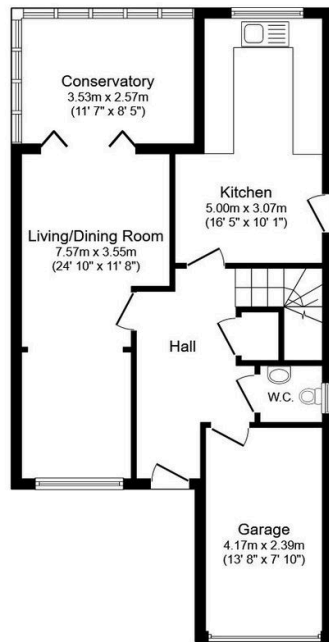
Tenure: Freehold

Council Tax: Band E

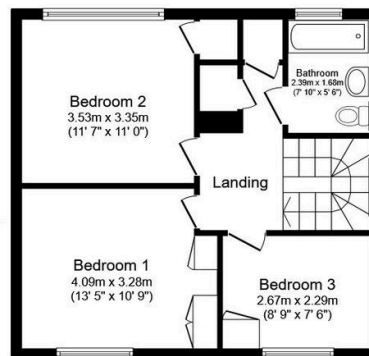
EPC Rating: Current C - Potential C

Key Features

- Watch our Video Tour
- Three Generous Bedrooms
- Excellent Potential To Extend/Improve (stpp)
- Popular School Catchment
- Extended 16ft Kitchen Breakfast Room
- Detached Family Home
- Large Rear Garden
- No Onward Chain
- 24ft Living/Dining Room
- Garage & Driveway Parking



Ground Floor
Floor area 65.2 sq.m. (702 sq.ft.)



First Floor
Floor area 47.9 sq.m. (515 sq.ft.)

Total floor area: 113.1 sq.m. (1,217 sq.ft.)

This floor plan is for illustrative purposes only. It is not drawn to scale. Any measurements, floor areas (including any total floor area), openings and orientations are approximate. No details are guaranteed, they cannot be relied upon for any purpose and do not form any part of any agreement. No liability is taken for any error, omission or misstatement. A party must rely upon its own inspection(s). Powered by www.Propertybox.io