



LANG TOWN
& COUNTRY

Terrys Barn, Trematon Farm, Trematon, Saltash, PL12 4RU



Guide Price £550,000



Terrys Barn is a striking detached stone barn conversion, completed in 2008, offering the perfect blend of rustic charm and modern luxury. With four bedrooms, three bathrooms, expansive living spaces, underfloor heating, and a detached garage with parking, this exceptional home combines character, comfort, and convenience in one of South East Cornwall's most desirable villages.

On entering, the hallway leads to the ground floor accommodation, which includes the master bedroom with built-in wardrobes and its own en-suite shower room. Two further bedrooms are also located on this level, both enjoying views over the garden. A beautifully presented family four-piece bathroom compliments these bedrooms.

The staircase rises to the first floor, filled with natural light as it leads to the principal living spaces. The sitting and dining room is a striking room oozing character features including partially vaulted ceilings, dual skylights, solid oak flooring, and double doors opening to a charming balcony with steps leading down to the garden. On the opposite side, a balustrade provides a dramatic feature, further enhancing the sense of space and character.

The kitchen and breakfast room is both stylish and practical, with a Shaker-style finish, and integrated appliances including a fridge and dishwasher. With ample space for a dining table, this is the perfect hub for both family living and entertaining.

A further staircase rises to the second floor, dedicated to a private bedroom suite. This serene retreat enjoys its own en-suite bathroom with a beautiful roll-top bath, Velux windows filling the room with natural light, and a galleried landing with a feature window overlooking the sitting room below.

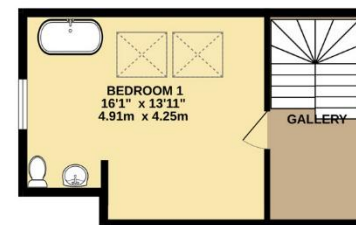
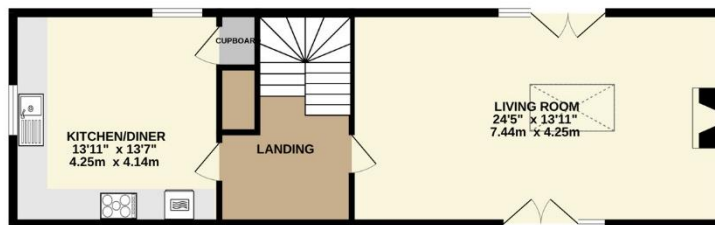
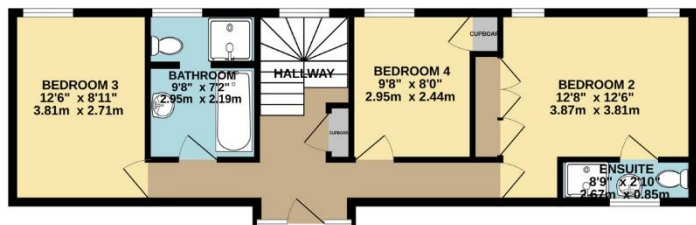
The outside space is equally appealing. Approached through a gated entrance, a tarmac driveway provides generous parking and leads to a single garage. To the rear is a secure lawned garden, bordered with shrubs and ideal for children or outdoor entertaining. External lantern lighting and a sense of privacy make this a perfect place to unwind.

Trematon itself is a charming and historic village surrounded by rolling countryside. Just a mile south of the A38, it offers excellent transport links to Saltash, Plymouth, and beyond. Saltash provides a wide range of shopping and recreational facilities, including a Waitrose supermarket, mainline railway station with direct links to London Paddington, and deep-water moorings along with a popular sailing club. Trematon Castle is a local landmark, and the area is highly regarded by those seeking rural tranquillity combined with convenience. With scenic walks, a strong community, and easy access to the Cornish coastline, Trematon offers an idyllic setting for both permanent residence and holiday living.



To view this property call Lang Town & Country Estate Agents on **01752 256000**.





TOTAL FLOOR AREA : 1525 sq.ft. (141.6 sq.m.) approx.

Whilst every attempt has been made to ensure the accuracy of the floorplan contained here, measurements of doors, windows, rooms and any other items are approximate and no responsibility is taken for any error, omission or mis-statement. This plan is for illustrative purposes only and should be used as such by any prospective purchaser. The services, systems and appliances shown have not been tested and no guarantee as to their operability or efficiency can be given.

Made with Metropix ©2025



Lang Town & Country
 6 Mannamead Road
 Plymouth
 PL4 7AA
 Tel: 01752 256000
 Email: property@langtownandcountry.com
www.langtownandcountry.com

Lang Town & Country endeavour to ensure the accuracy of property details produced and displayed, we have not tested any apparatus, equipment, fixtures, fittings or services and so cannot verify that they are connected, in working order or fit for purpose. A buyer must check the availability of any property and make an appointment to view before embarking on any journey to see a property.

