



Hurford's

Svenskaby, Orton Wistow, Peterborough Freehold £600,000

Key Features

🛏️ 4 🚿 3 💡 C 🏠 F

- Dutch Barn Styler Home
- Four Bedrooms
- Balcony
- Generous Sized Plot
- Two Bathrooms

Constructed in the traditional Nordic style, the majority of materials were imported directly from Scandinavia, ensuring authenticity and craftsmanship rarely found elsewhere. Each home within Svenskaby occupies a generous plot, ideal for families and for those who value both indoor and outdoor living.

The original homes were thoughtfully designed with features such as balconies, internal saunas, and triple glazing throughout. This particular Dutch barn-style property has been beautifully maintained by its current owners and showcases a feature lounge with a ski-lodge-inspired open fireplace - a perfect focal point for cozy evenings. The ground floor also offers a spacious dining room, a large kitchen/breakfast room with a separate utility, and a bright, welcoming reception hall.



Upstairs, there are four well-proportioned bedrooms. The master bedroom benefits from a recently refitted en-suite bathroom, while the family shower room - formerly the home's sauna - provides further flexibility and convenience.

Occupying a substantial corner plot, the property enjoys a large yet easily maintained frontage, offering ample off-road parking for several vehicles via a block-paved driveway leading to a detached garage with an up-and-over door. The rear garden is beautifully landscaped, providing a high degree of privacy and a tranquil setting to relax and enjoy the surrounding nature.

Svenskaby lies within easy reach of Ferry Meadows Country Park and offers excellent road connections via the A1 to both the north and south. The nearby parkway system provides quick access to Peterborough City Centre, where rail links to London take under an hour.

Early viewing is highly recommended.



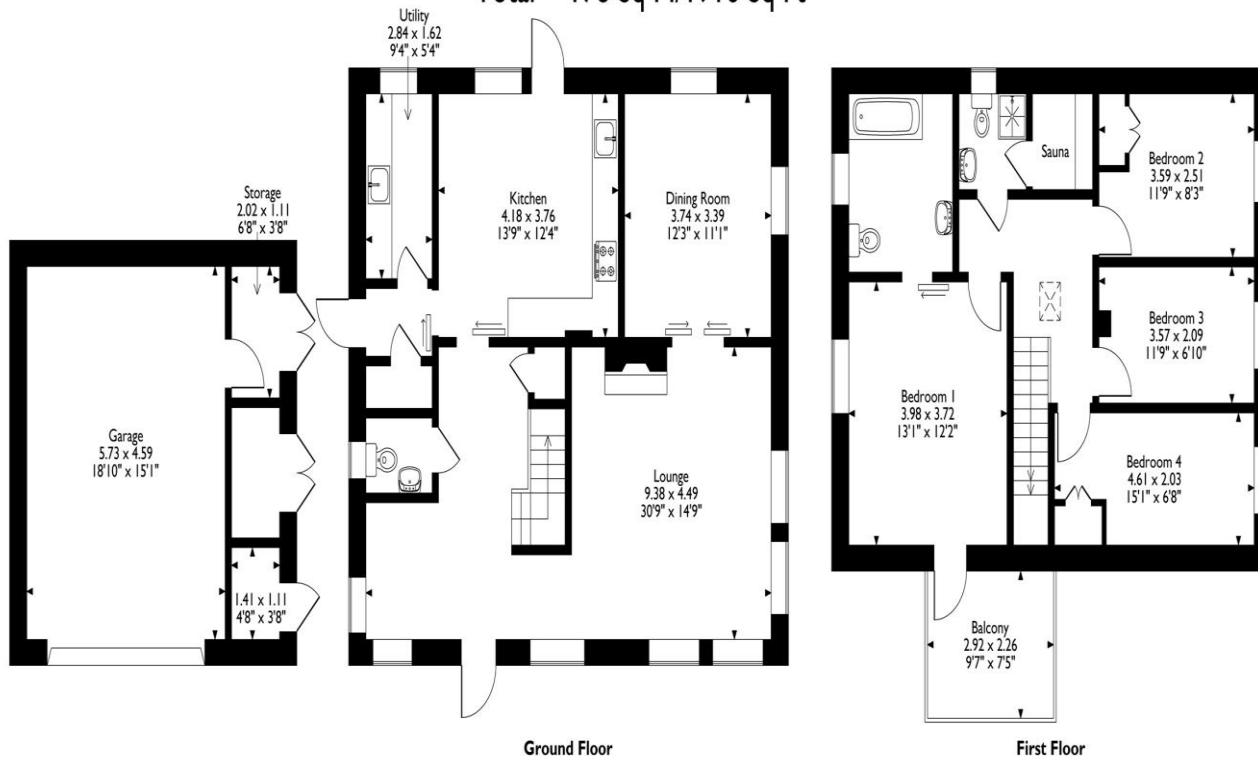
Svenskaby, Orton Wistow, Peterborough

Approximate Gross Internal Area

Main House = 144 Sq M/1550 Sq Ft

Garage/Storage = 34 Sq M/366 Sq Ft

Total = 178 Sq M/1916 Sq Ft



Please note that the location of doors, windows and other items are approximate and this floorplan is to be used for illustrative purposes only. Unauthorized reproduction is prohibited.

Selling your property?

Contact us to arrange a FREE home valuation.

 01733 380956

 Unit 5, The Barns Milton Lane, Castor, Peterborough,
Cambridgeshire, PE5 7DH

 Castor@hurfords.co.uk

 www.hurfords.co.uk



 SCAN ME



Hurfords is a trading name of Sharman Quinney Holdings Limited which is registered in England and Wales under company number 4174227, Registered Office is Cumbria House, 16-20 Hockliffe Street, Leighton Buzzard, Bedfordshire, LU7 1GN. VAT Registration Number is 500 2481 05.

1: These particulars do not constitute part or all of an offer or contract. 2: The measurements indicated are supplied for guidance only and as such must be considered incorrect. 3: Potential buyers are advised to recheck the measurements before committing to any expense. 4: Hurfords has not tested any apparatus, equipment, fixtures, fittings or services and it is the buyers interests to check the working condition of any appliances. 5: Hurfords has not sought to verify the legal title of the property and buyers must obtain verification from their legal representative. 6: Intending purchasers will be asked to produce identification documentation at a later stage and we would ask your co-operation in order that there will be no delay in agreeing the sale. Ref: HUC104010 - 0004

