



**Guide Price**  
**£500,000**

**Freehold**

4x  1x  1x 

**Linton Road, Loose,  
Maidstone, Kent, ME15**

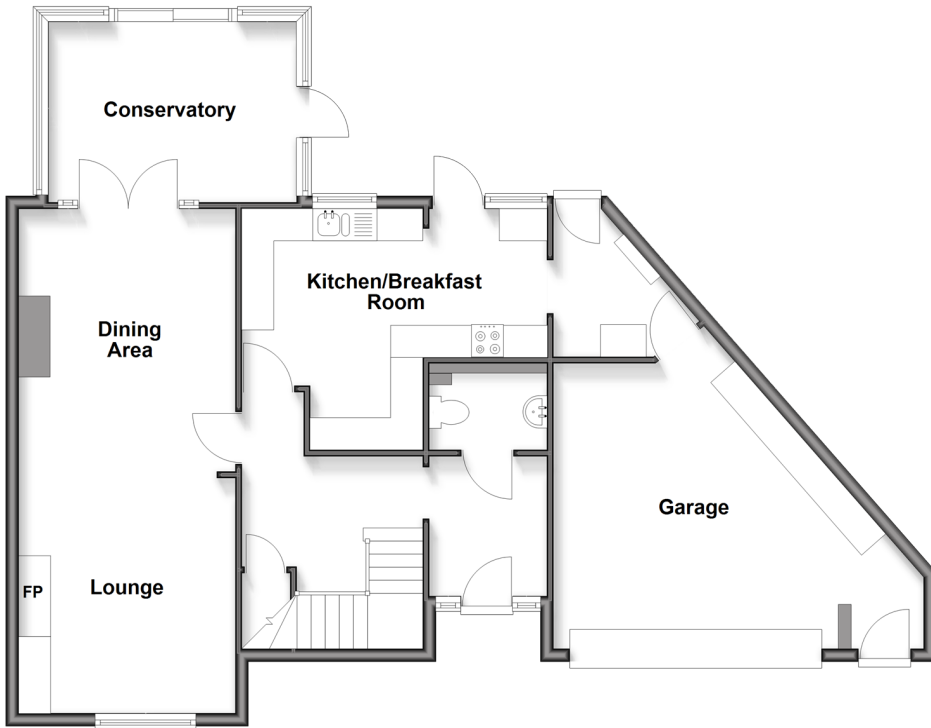
**OVER 60?**

Secure this property  
for up to **59% less!**

*Wards*  
Helping you move forwards

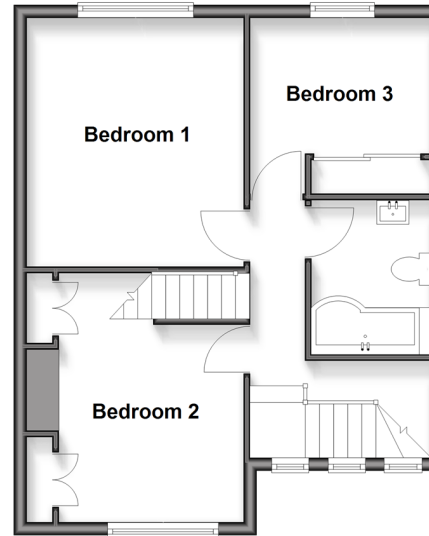
### Ground Floor

Approx. 94.5 sq. metres (1017.7 sq. feet)



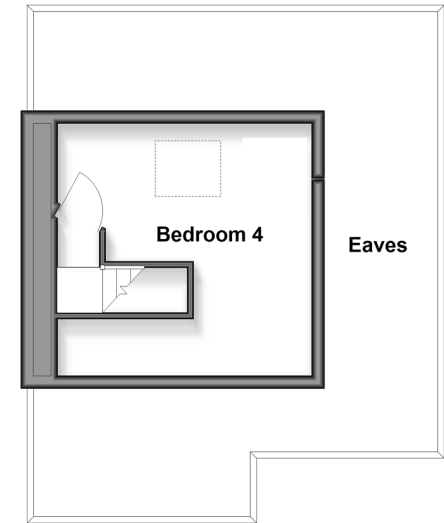
### First Floor

Approx. 46.2 sq. metres (497.6 sq. feet)



### Second Floor

Approx. 16.9 sq. metres (181.9 sq. feet)



## Accommodation

### GROUND FLOOR

Entrance Hall  
Downstairs Cloakroom: 6'0 x 3'0 (1.83m x 0.92m)  
Kitchen/Breakfast Room: 15'1 x 11'1 (4.60m x 3.38m)  
Lounge: 11'1 x 10'1 (3.38m x 3.08m)  
Dining Area: 12'1 x 11'1 (3.69m x 3.38m)  
Conservatory: 12'1 x 10'0 (3.69m x 3.05m)

### FIRST FLOOR

Landing  
Bedroom 1: 12'1 x 11'1 (3.69m x 3.38m)  
Bedroom 2: 11'1 x 10'0 (3.38m x 3.05m)  
Bedroom 3: 9'1 x 9'0 (2.77m x 2.75m)  
Bathroom: 8'1 x 6'0 (2.47m x 1.83m)

### SECOND FLOOR

Bedroom 4: 13'0 x 12'0 (3.97m x 3.66m)  
Eaves

### OUTSIDE

Double Garage and Driveway  
Front and Rear Gardens



## Main features

- Superb and spacious kitchen/breakfast room, perfect for those who love to entertain
- Fantastic conservatory, offering additional space
- Private and generous rear garden backing onto the picturesque Loose Valley conservation area
- Double garage with ample parking on the spacious driveway
- Walking distance to local shops, amenities and sought after primary and secondary schools



### Nearest Schools

Primary Schools: Loose Primary 0.3 miles, Tiger Primary 0.9 miles, Boughton Monchelsea Primary 0.9 miles  
Secondary Schools: Cornwallis Academy 0.5 miles, Maidstone Grammar School 1.8 miles, Oakwood Park Grammar School 2.2 miles



### Transport Information

Train Stations: Maidstone West 2.1 miles, East Farleigh 2.3 miles, Maidstone Barracks 2.6 miles



### Address

Linton Road, Loose, Maidstone, Kent, ME15



### Directions

For directions to this property please contact us.



**Wards**  
Helping you move forwards

Call Loose Branch 01622 744067 ■ [wardsofkent.co.uk](http://wardsofkent.co.uk)



■ Legal advice should be taken to verify fixtures/fittings, planning, alterations and/or lease details ■ Appliances & services are untested, dimensions are approximate and floor plans are not to scale  
■ Through a Homewise Home For Life Plan people aged 60+ can secure this property for up to 50% less, by purchasing a Lifetime Lease.

EPC RATING

CURRENT: D(57) POTENTIAL: C(74)

13022294/20251112/SJ/AS