



**Guide Price**  
**£900,000**

**Freehold**

4x  2x  3x 

**London Road, Stanford  
Rivers, Ongar, Essex,  
CM5**

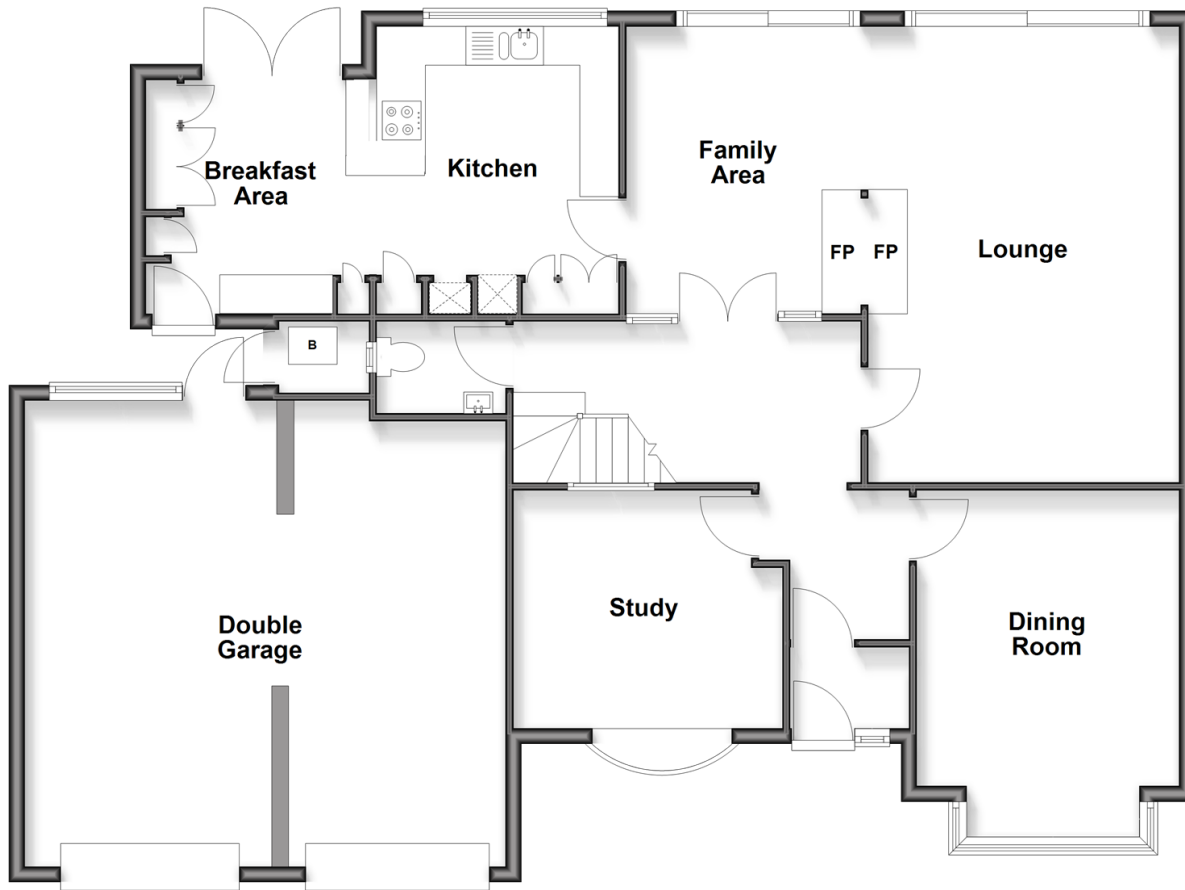
**OVER 60?**

Secure this property  
for up to **59% less!**

 **DOUGLAS  
ALLEN**  
Helping you move forwards

## Ground Floor

Approx. 138.4 sq. metres (1489.2 sq. feet)



## First Floor

Approx. 93.8 sq. metres (1010.1 sq. feet)



## Accommodation

### GROUND FLOOR

Entrance Porch  
Entrance Hall  
Lounge : 19'3 x 13'2 (5.87m x 4.02m)  
Family Area: 12'2 x 9'5 (3.71m x 2.87m)  
Dining Room : 14'6 x 11'0 (4.42m x 3.36m)  
Study : 10'2 x 10'0 (3.10m x 3.05m)  
Kitchen/Breakfast Room : 20'4 x 9'10 (6.20m x 3.00m)  
Cloakroom

### FIRST FLOOR

Landing  
Bedroom 1 : 17'4 x 13'5 (5.29m x 4.09m)  
En-Suite Dressing Area  
En-Suite Shower Room  
Bedroom 2: 15'2 x 10'4 (4.63m x 3.15m)  
Bedroom 3 : 12'2 x 10'7 (3.71m x 3.23m)  
Bedroom 4 : 10'10 x 9'5 (3.30m x 2.87m)  
Bathroom

### OUTSIDE

Double Garage  
Off Street Parking  
Rear Garden



## Main features

- Double garage and off street parking
- Potential to extend, subject to planning permissions
- Large rear garden with views over open countryside
- Close to local amenities
- Spacious accommodation incorporating a study
- Short drive to Epping town centre



### Nearest Schools

Primary Schools: Chipping Ongar Primary 1.4 miles, Kelvedon Hatch Community Primary 2.0 miles, Shelley Primary 2.3 miles

Secondary Schools: Peniel Academy 2.2 miles, Dycorts



### Transport Information

Train Stations: Harlow Mill 8.6 miles, Harlow Town 8.9 miles, Chingford 9.9 miles  
Underground Epping 4.9 miles, Theydon Bois 5.4 miles, Debden 6.6 miles



### Address

London Road, Stanford Rivers, Ongar, Essex, CM5



### Directions

For directions to this property please contact us.



Call Epping Branch 01992 560600 ■ [douglasallen.co.uk](http://douglasallen.co.uk)



■ If buying to rent, please check if Local Authority licensing schemes apply before proceeding

■ Through a Homewise Home For Life Plan people aged 60+ can secure this property for up to 59% less, by purchasing a Lifetime Lease

<b>EPC RATING</b> Lightbulb icon   0000	<b>CURRENT:</b> E(52)	<b>POTENTIAL:</b> C(71)
--	--------------------------	----------------------------

51509358/20260520/LA/LA