



Guide Price

£310,000

Freehold

3x  2x  1x 

**Cockreed Lane, New
Romney, Kent, TN28**

OVER 60?

Secure this property
for up to **59% less!**

Wards
Helping you move forwards



Main features

- Immaculate well presented home
- Semi-rural non estate location
- Spacious with modern stylish decoration
- En-suite shower room to bedroom 1
- Quiet yet convenient location approximately 5 minute drive from the coast

Accommodation

GROUND FLOOR

Entrance Hall

Lounge: 17'4 x 12'0 (5.29m x 3.66m)

Kitchen: 18'7 (5.67m) x 9'6 (2.90m) narrowing to 6'6 (1.98m)

Cloakroom

FIRST FLOOR

Landing

Bedroom 1: 16'4 x 9'9 (4.98m x 2.97m)

En-Suite Shower Room

Bedroom 2: 12'8 x 7'2 (3.86m x 2.19m)

Bedroom 3: 10'8 x 9'9 (3.25m x 2.97m)

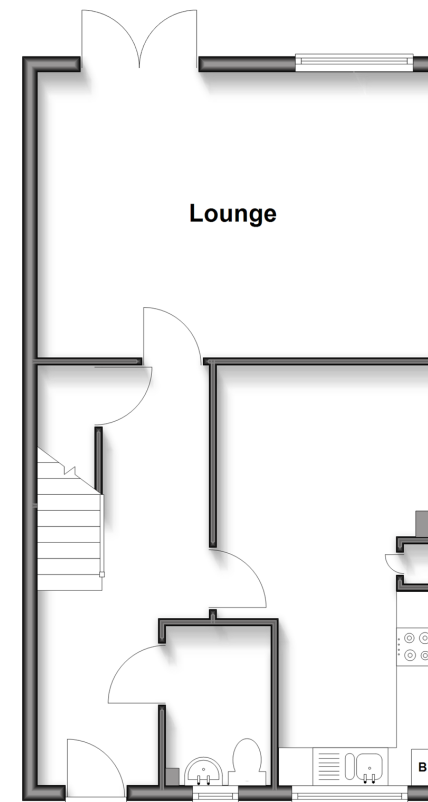
Bathroom

OUTSIDE

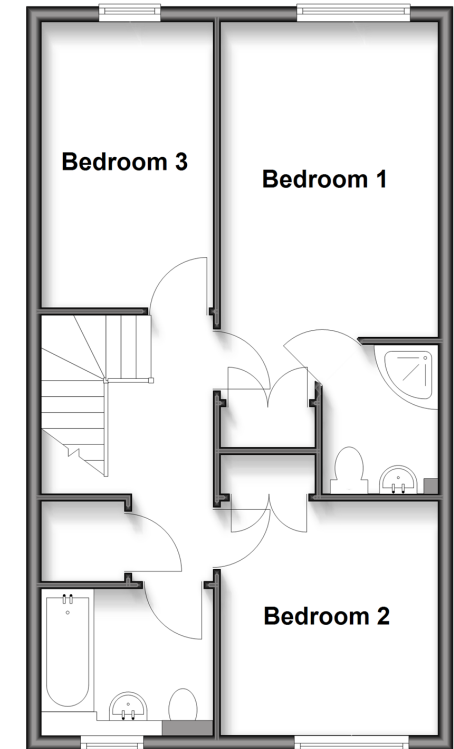
Front & Rear Gardens

2 Allocated Parking Bays

Ground Floor
Approx. 49.7 sq. metres (534.5 sq. feet)



First Floor
Approx. 49.7 sq. metres (534.5 sq. feet)



Call New Romney - 01797 363745 ■ wardsokent.co.uk

- A private rental licensing scheme applies to some properties in this area, please contact us before proceeding
- Legal advice should be taken to verify fixtures/fittings, planning, alterations and/or lease details
- Appliances & services are untested, dimensions are approximate and floor plans are not to scale
- Through a Homewise Home For Life Plan people aged 60+ can secure this property for up to 50% less, by purchasing a Lifetime Lease.



13525902/20250924/SRH/CA